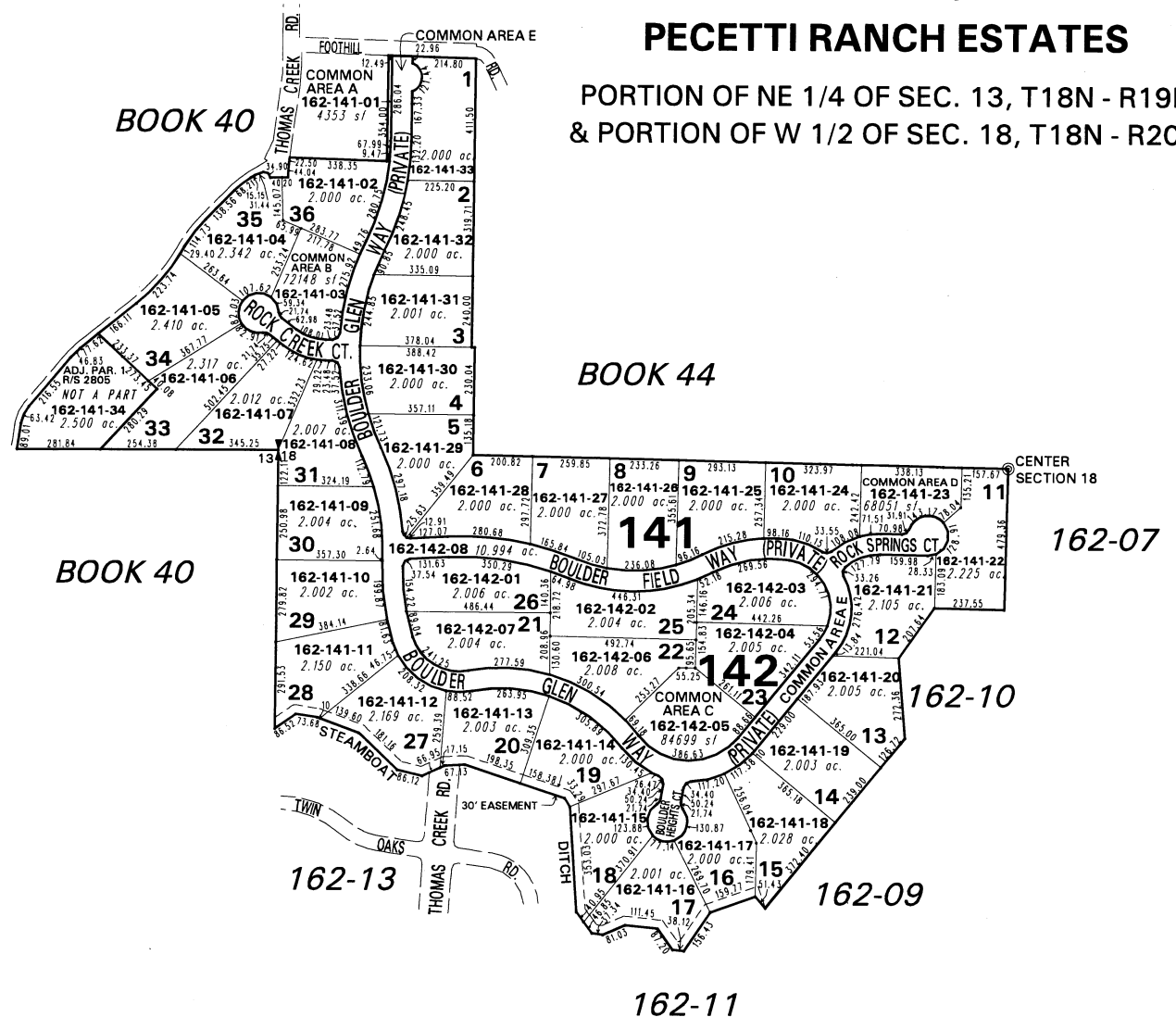


BOOK 44

(#3903)

PECETTI RANCH ESTATES

PORTION OF NE 1/4 OF SEC. 13, T18N - R19E
& PORTION OF W 1/2 OF SEC. 18, T18N - R20E



NOTE: This map is prepared for the use of the Washoe County Assessor for assessment and illustrative purposes only. It does not represent a survey of the premises. No liability is assumed as to the sufficiency or the accuracy of the data delineated hereon.

Office of Washoe County Assessor, Nevada - Robert W. McGowan

This area previously shown on 44-18

NOTE: Areas of parcels which are less than 2 acres are shown in square feet.

Drawn by	TWT 02/05/01
Revised	