

162-19

162-06

(#1538)

# EDMANDS SUBDIVISION

PORTION E 1/2 SEC. 18  
T18N - R20E

## (#1474) STONEHAVEN ACRES

PORTION E 1/2 SEC. 18  
T18N - R20E

162-07

162-07

162-07

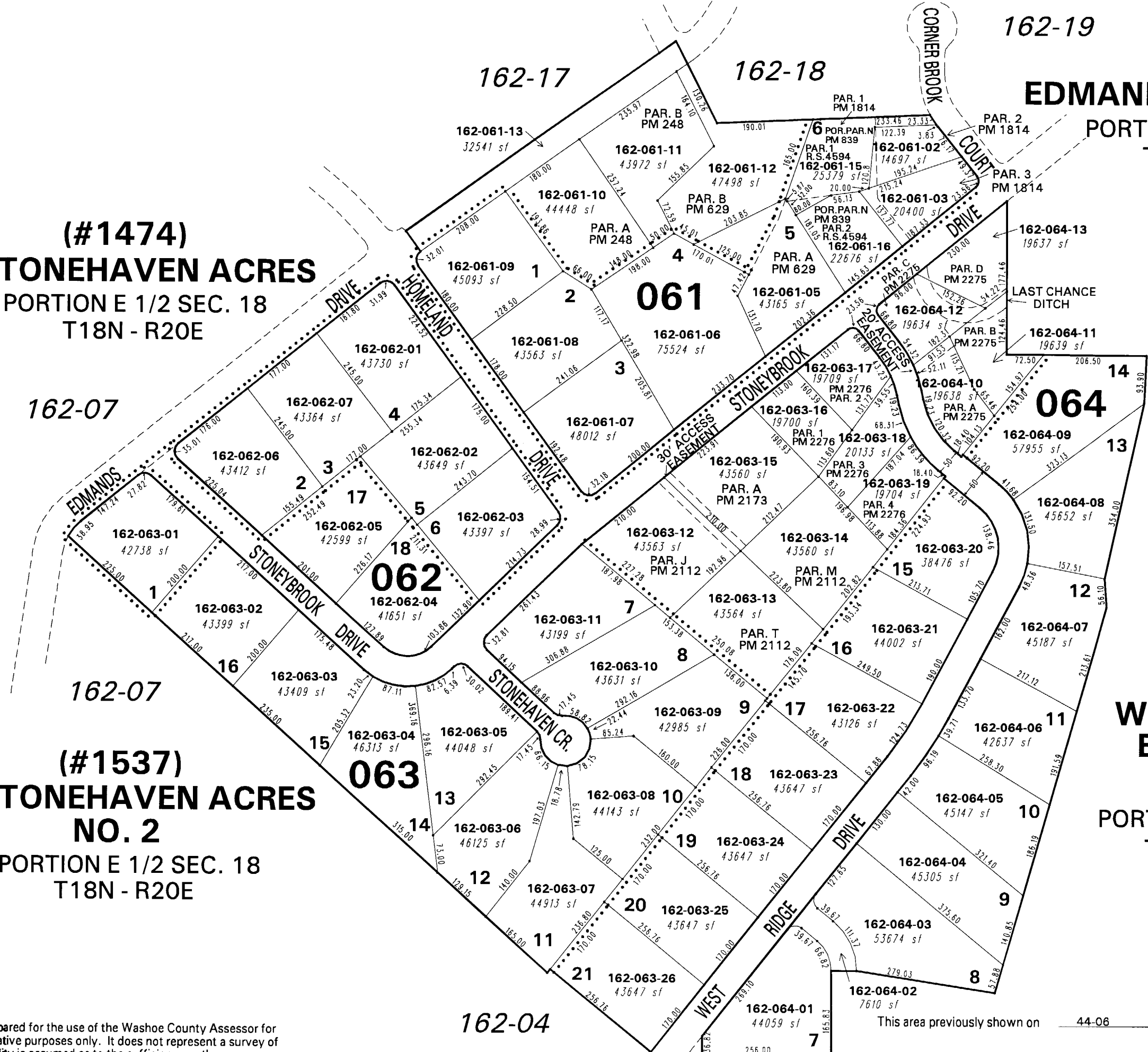
## (#1537) STONEHAVEN ACRES NO. 2

PORTION E 1/2 SEC. 18  
T18N - R20E

162-04

Office of Washoe County Assessor, Nevada - Robert W. McGowan

NOTE: This map is prepared for the use of the Washoe County Assessor for assessment and illustrative purposes only. It does not represent a survey of the premises. No liability is assumed as to the sufficiency or the accuracy of the data delineated hereon.



BOOK 44

## (#681) WEST RIDGE ESTATES NO. 1

PORTION SEC. 18, 17  
T18N - R20E

1" = 200'



This area previously shown on 44-06

NOTE: Areas of parcels which are less than 2 acres are shown in square feet.

Drawn by	5/97 CN/TF
Revised	HCS 1/8/03