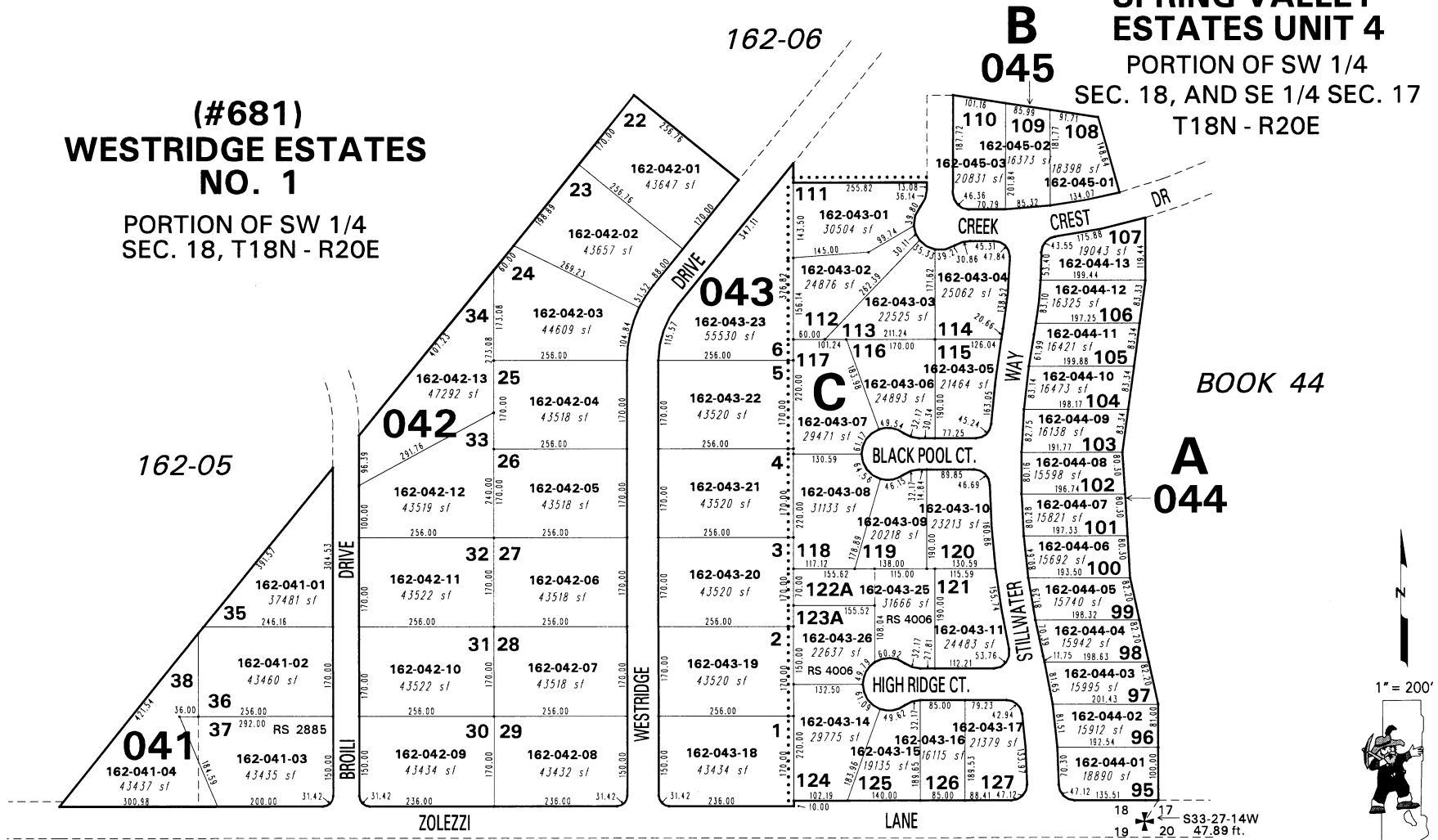


(#1941)  
AMENDED  
SPRING VALLEY  
ESTATES UNIT 4

PORTION OF SW 1/4  
SEC. 18, AND SE 1/4 SEC. 17  
T18N - R20E

(#681)  
WESTRIDGE ESTATES  
NO. 1

PORTION OF SW 1/4  
SEC. 18, T18N - R20E



BOOK 49

This area previously shown on 44-08

Office of Washoe County Assessor, Nevada - Robert W. McGowan

NOTE: Areas of parcels which are less than 2 acres are shown in square feet.

|          |                          |
|----------|--------------------------|
| Drawn by | 5/97 CN/TF               |
| Revised  | CFB 12/4/98 KSB 12/11/01 |

NOTE: This map is prepared for the use of the Washoe County Assessor for assessment and illustrative purposes only. It does not represent a survey of the premises. No liability is assumed as to the sufficiency or the accuracy of the data delineated hereon.