

**(#4620)
TANAMERA**

PHASE 1
A CONDOMINIUM SUBDIVISION
PORTION OF THE SE 1/4 SECTION 8
AND THE SW 1/4 SECTION 9
T18N - R20E

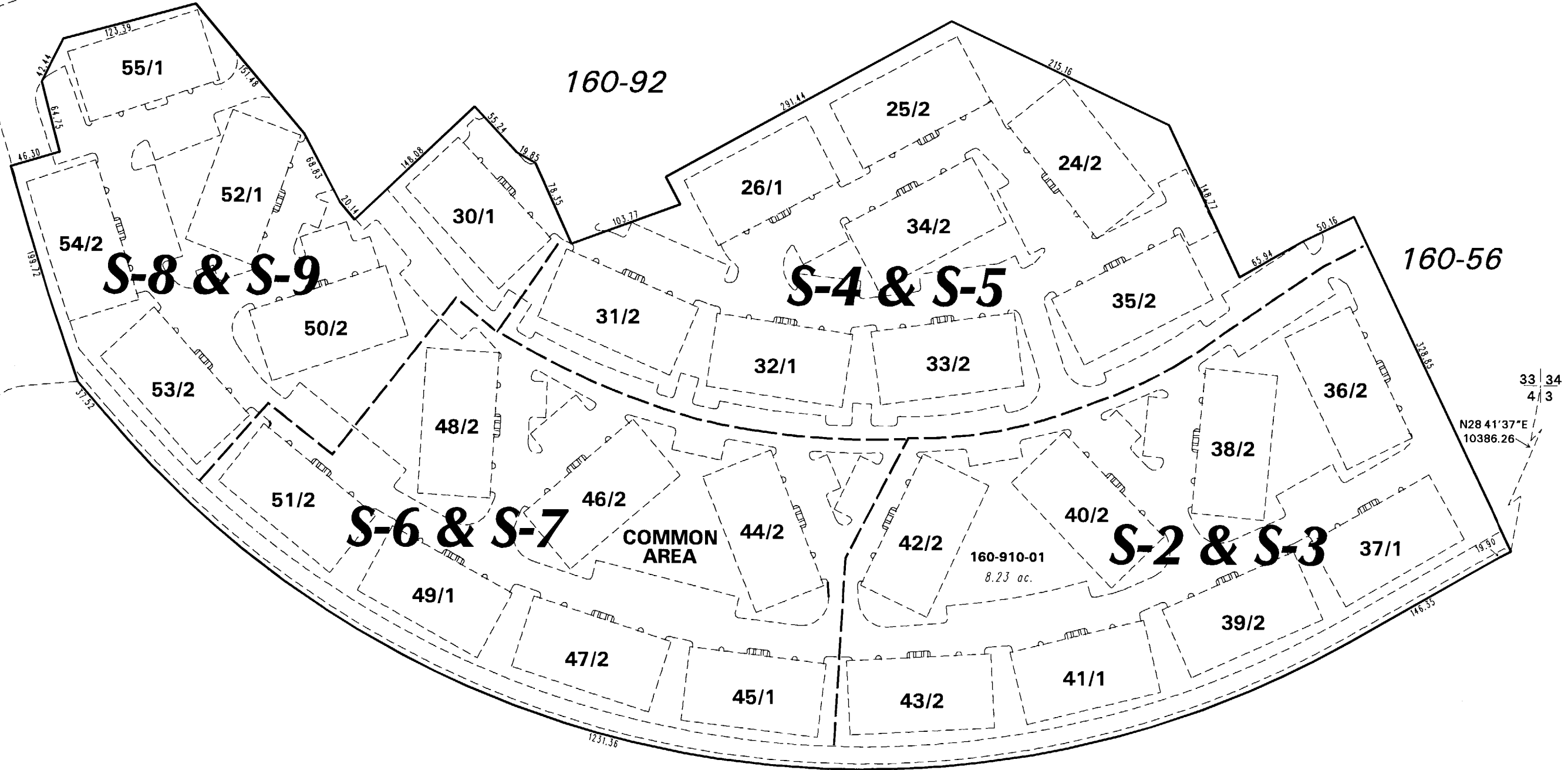
LAUREN COURT

160-22

160-92

160-56

160-32



NOTE: This map is prepared for the use of the Washoe County Assessor for assessment and illustrative purposes only. It does not represent a survey of the premises. No liability is assumed as to the sufficiency or the accuracy of the data delineated hereon.

Office of Washoe County Assessor, Nevada - Robert W. McGowan

This area previously shown on 160-22

NOTE: Areas of parcels which are less than 2 acres are shown in square feet.

Drawn by	CFB 4/3/2006
Revised	