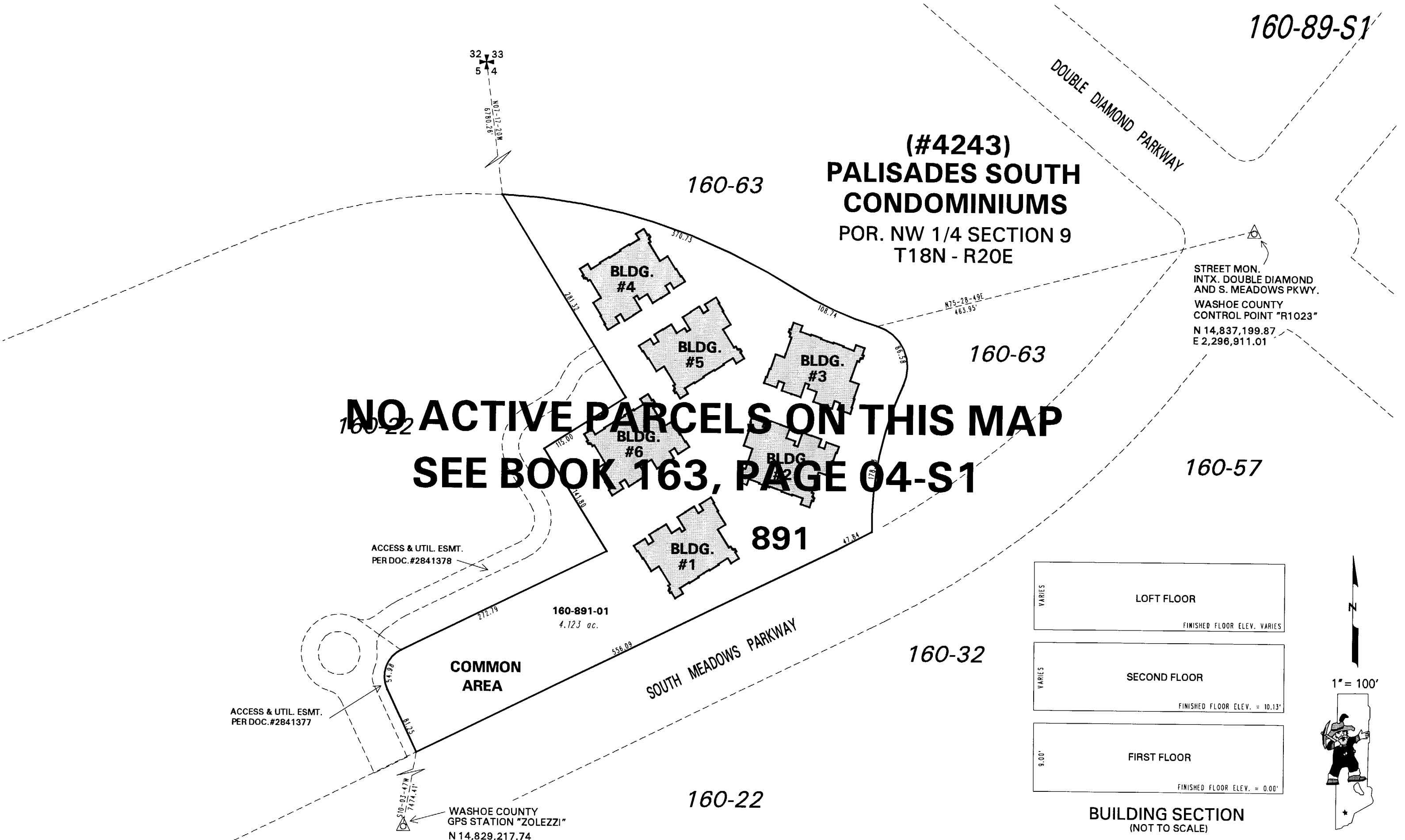


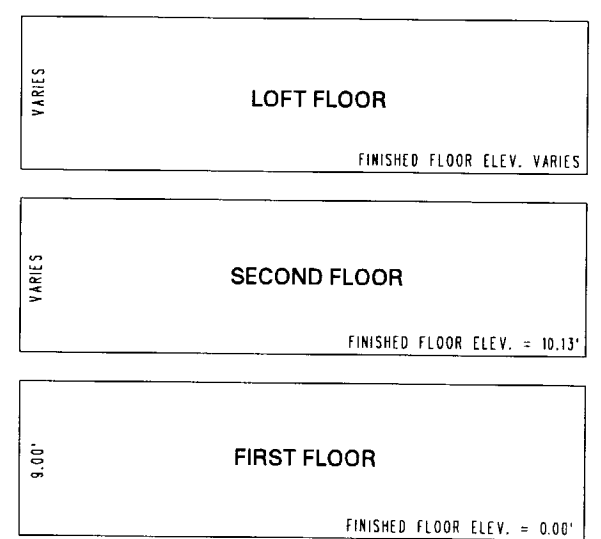
160-89-S1

**(#4243)
PALISADES SOUTH
CONDOMINIUMS**
POR. NW 1/4 SECTION 9
T18N - R20E

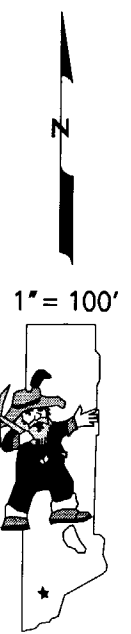
**NO ACTIVE PARCELS ON THIS MAP
SEE BOOK 163, PAGE 04-S1**



STREET MON.
INTX. DOUBLE DIAMOND
AND S. MEADOWS PKWY.
WASHOE COUNTY
CONTROL POINT "R1023"
N 14,837,199.87
E 2,296,911.01



BUILDING SECTION
(NOT TO SCALE)



NOTE: This map is prepared for the use of the Washoe County Assessor for assessment and illustrative purposes only. It does not represent a survey of the premises. No liability is assumed as to the sufficiency or the accuracy of the data delineated hereon.

Office of Washoe County Assessor, Nevada - Robert W. McGowan

This area previously shown on 160-22

NOTE: Areas of parcels which are less than 2 acres are shown in square feet.

Drawn by HCS 08/27/03
Revised CFB 3/8/2006