

PARCEL MAPS FOR MOUNTAINVIEW CAMPUS INVESTERS, LLC (A PLANNED UNIT DEVELOPMENT)

PORTION OF THE NE 1/4
SECTION 17, T18N - R20E

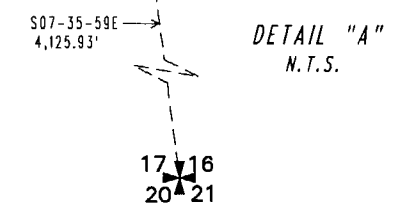
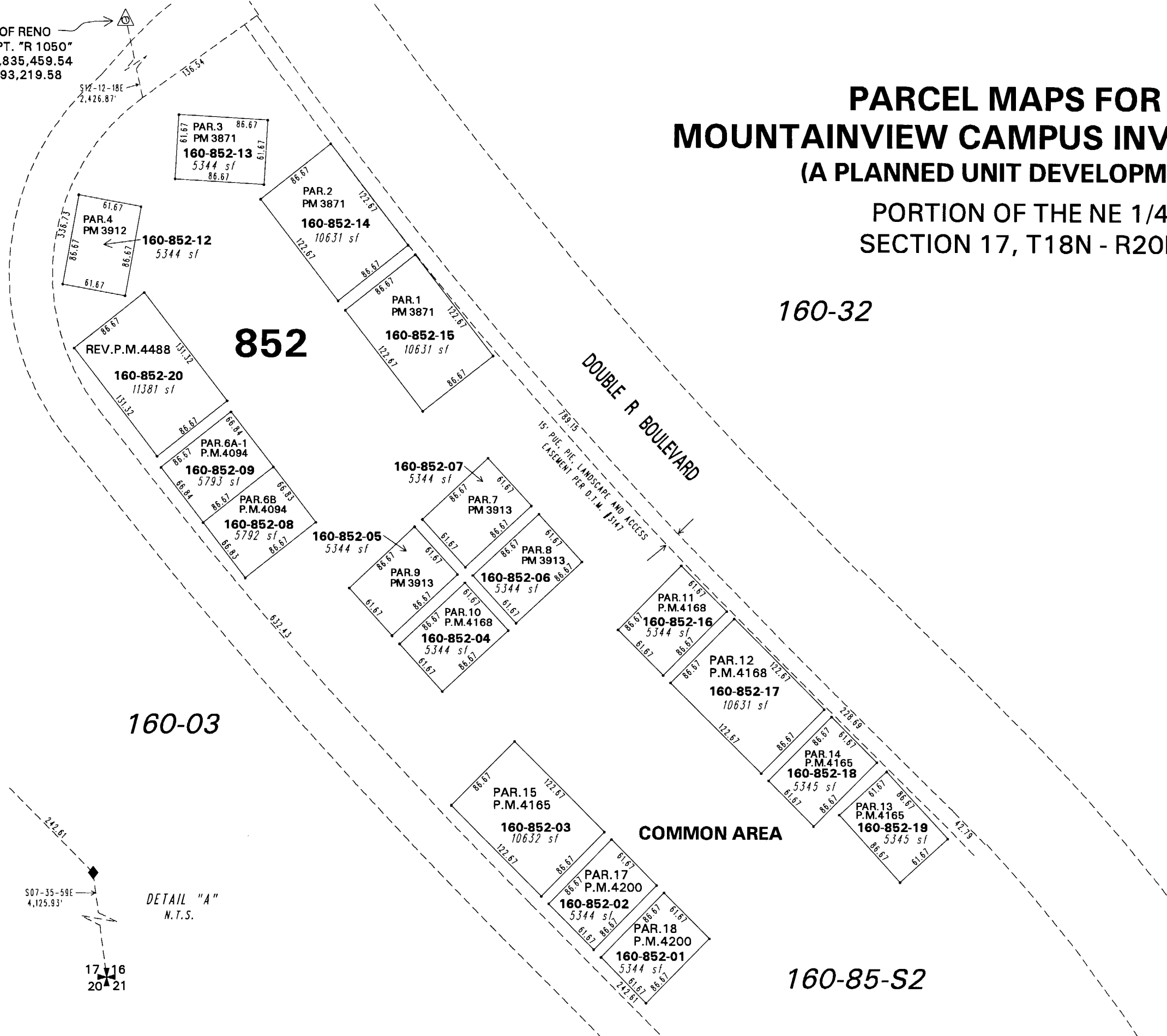
160-03

160-32

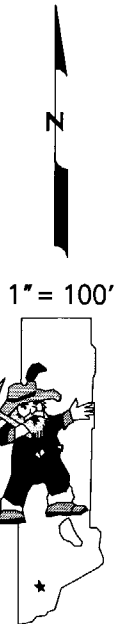
160-03

160-85-S2

CITY OF RENO
GPS PT. "R 1050"
N 14,835,459.54
E 2,293,219.58



SEE DETAIL "A"
FOR TIE



NOTE: This map is prepared for the use of the Washoe County Assessor for assessment and illustrative purposes only. It does not represent a survey of the premises. No liability is assumed as to the sufficiency or the accuracy of the data delineated hereon.

Office of Washoe County Assessor, Nevada - Robert W. McGowan

This area previously shown on 160-03

NOTE: Areas of parcels which are less than 2 acres are shown in square feet.

Drawn by	HCS 06/10/02
Revised	CFB 8/26/2004 CFB 9/1/2004
	CFB 3/30/2006