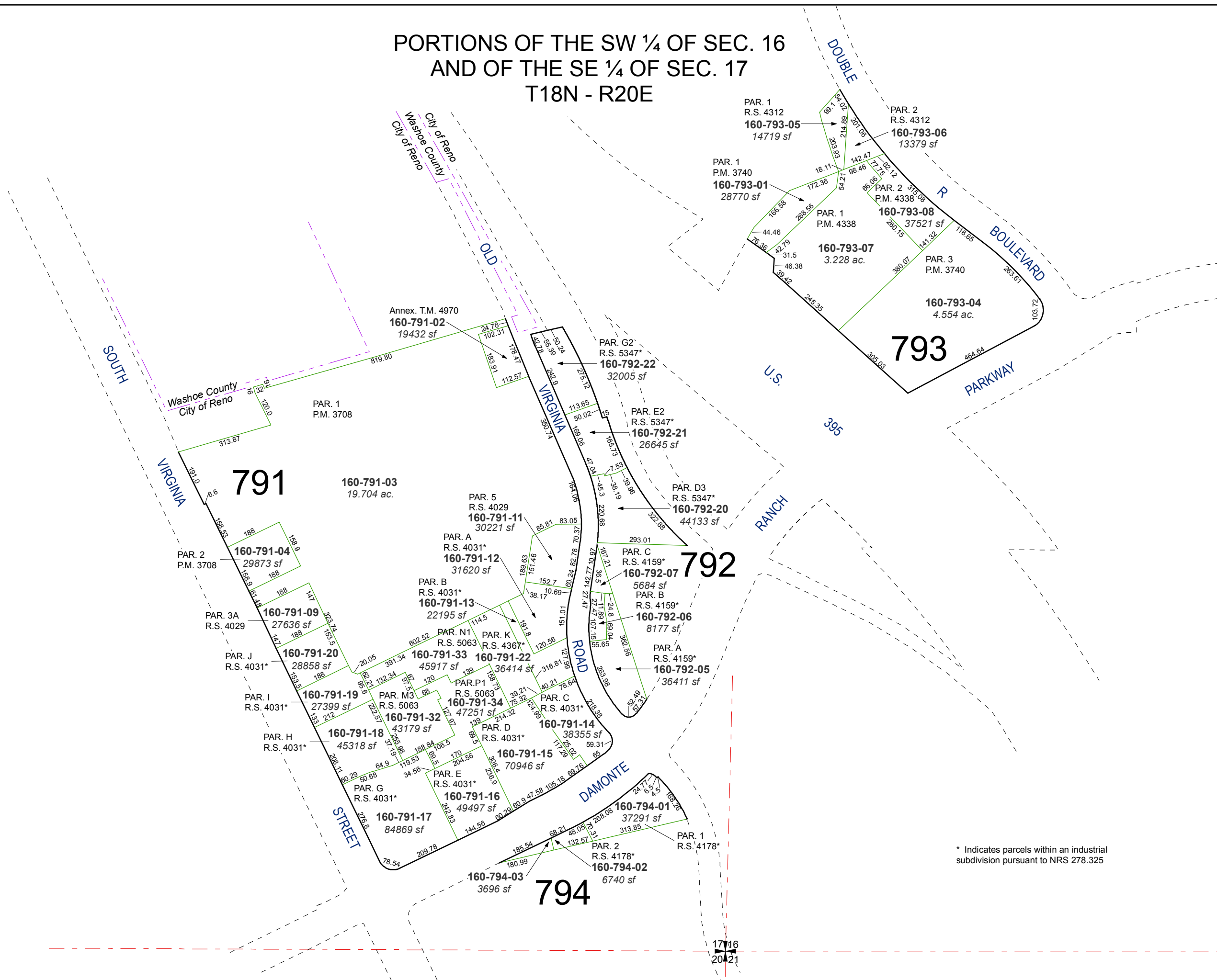


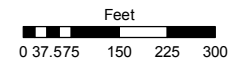
PORTIONS OF THE SW ¼ OF SEC. 16  
AND OF THE SE ¼ OF SEC. 17  
T18N - R20E



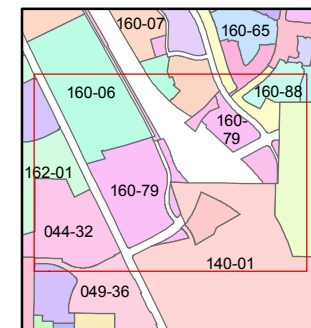
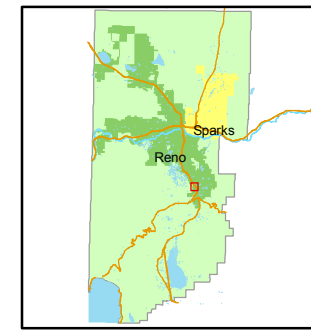
Assessor's Map Number  
**160-79**

STATE OF NEVADA  
**WASHOE COUNTY**  
ASSESSOR'S OFFICE  
Joshua G. Wilson, Assessor

1001 East Ninth Street  
Building D  
Reno, Nevada 89512  
(775) 328-2231



1 inch = 300 feet



created by: NLH 7/06/2011

last updated: NLH 7/15/11

area previously shown on map(s)  
160-03

\* Indicates parcels within an industrial subdivision pursuant to NRS 278.325

NOTE: This map was prepared for the use of the Washoe County Assessor for assessment and illustrative purposes only. It does not represent a survey of the premises. No liability is assumed as to the sufficiency or accuracy of the data delineated herein.