

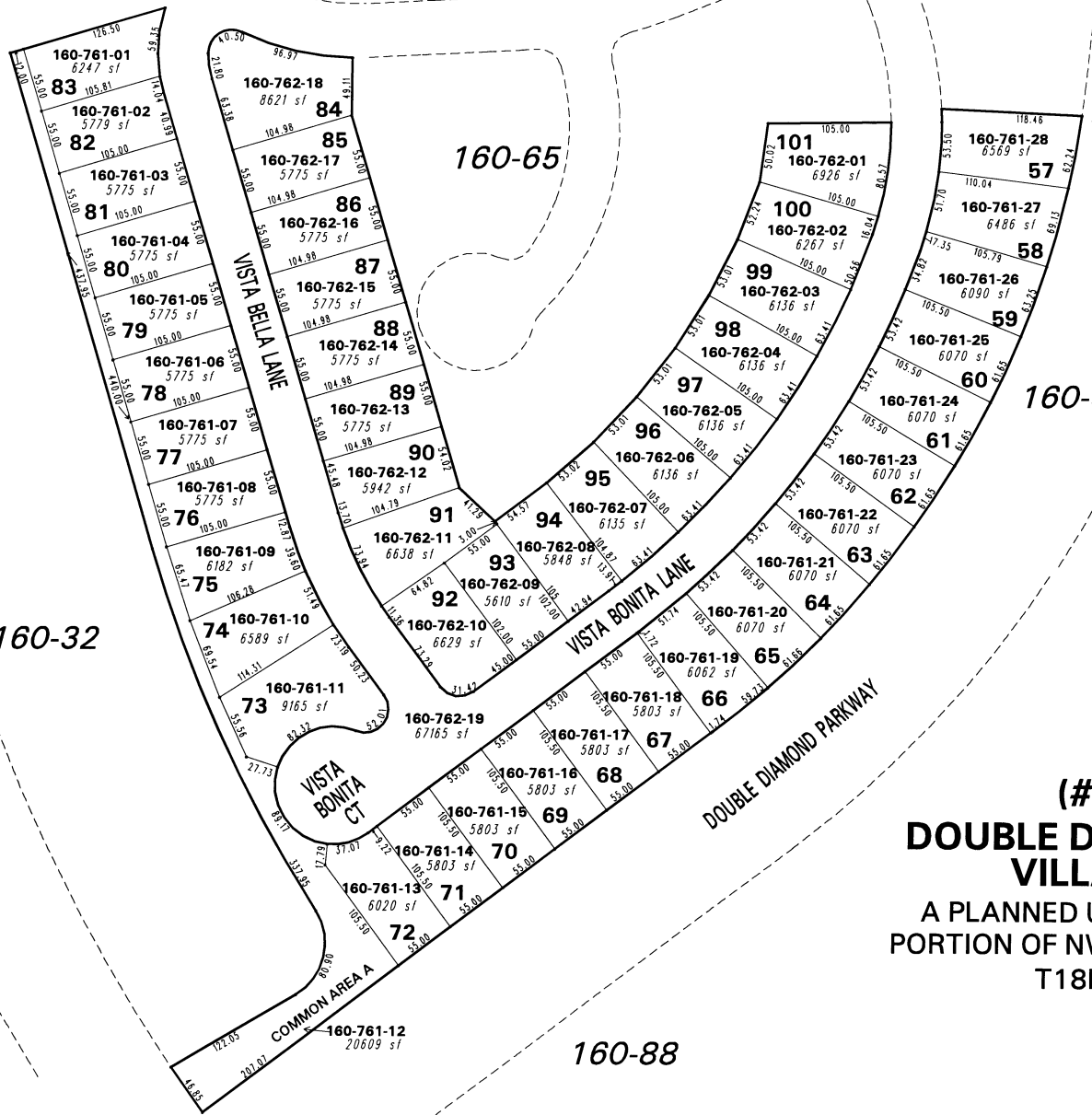
DOUBLE R BLVD

160-32

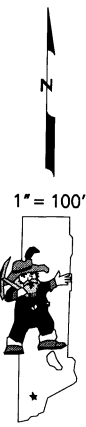
160-65

160-39

160-88



(#3856)  
**DOUBLE DIAMOND RANCH  
 VILLAGE 17B**  
 A PLANNED UNIT DEVELOPMENT  
 PORTION OF NW 1/4 OF SECTION 16  
 T18N - R20E



NOTE: This map is prepared for the use of the Washoe County Assessor for assessment and illustrative purposes only. It does not represent a survey of the premises. No liability is assumed as to the sufficiency or the accuracy of the data delineated hereon.

Office of Washoe County Assessor, Nevada - Robert W. McGowan

This area previously shown on 160-39

NOTE: Areas of parcels which are less than 2 acres are shown in square feet.

Drawn by	DSR	08/18/00
Revised	HCS 4/9/03	CFB 10/2/2003