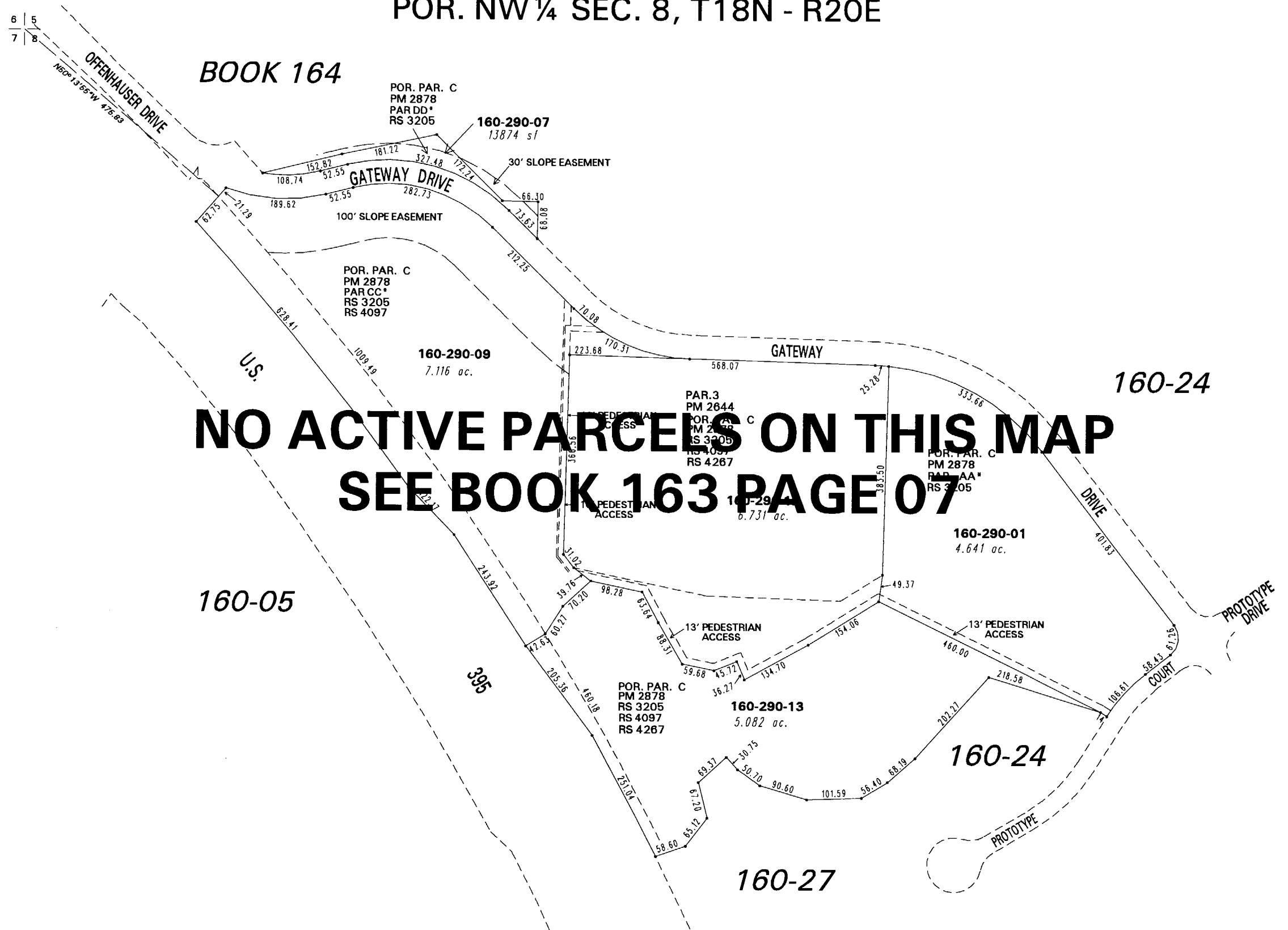


POR. NW 1/4 SEC. 8, T18N - R20E



**NO ACTIVE PARCELS ON THIS MAP
SEE BOOK 163 PAGE 07**

*Parcels within an industrial subdivision pursuant to NRS 278.325

NOTE: This map is prepared for the use of the Washoe County Assessor for assessment and illustrative purposes only. It does not represent a survey of the premises. No liability is assumed as to the sufficiency or the accuracy of the data delineated hereon.

Office of Washoe County Assessor, Nevada - Robert W. McGowan

This area previously shown on 22-42

NOTE: Areas of parcels which are less than 2 acres are shown in square feet.

Drawn by	GZ 4/1/97	4/14/97 dsr
Revised	HCS 7/17/02	HCS 7/23/03
	CFB 3/14/2006	