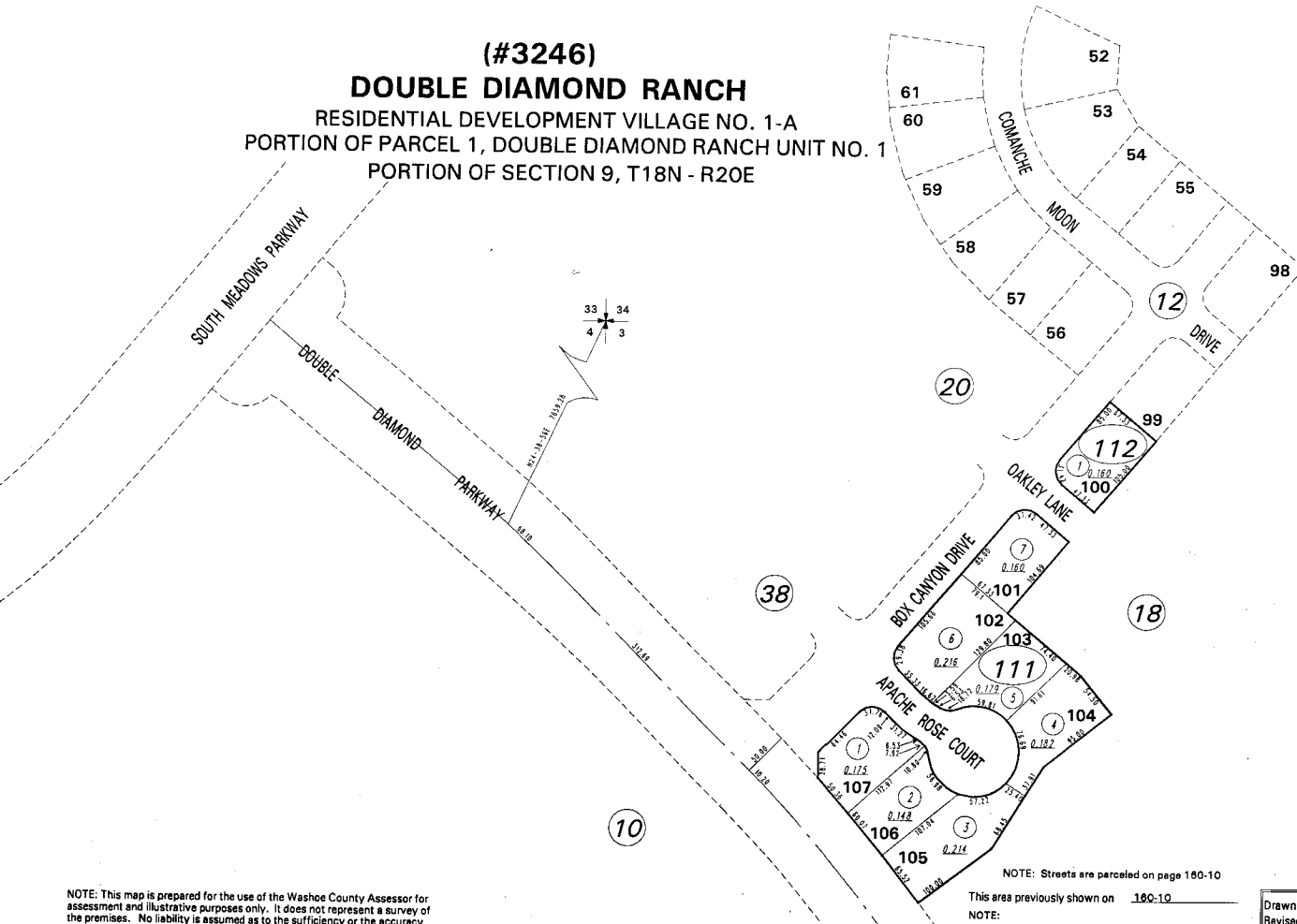


(#3246)  
**DOUBLE DIAMOND RANCH**  
 RESIDENTIAL DEVELOPMENT VILLAGE NO. 1-A  
 PORTION OF PARCEL 1, DOUBLE DIAMOND RANCH UNIT NO. 1  
 PORTION OF SECTION 9, T18N - R20E



NOTE: This map is prepared for the use of the Washoe County Assessor for assessment and illustrative purposes only. It does not represent a survey of the premises. No liability is assumed as to the sufficiency or the accuracy of the data delineated hereon.

Office of Washoe County Assessor, Nevada - Robert W. McGowan

NOTE: Streets are parceled on page 160-10  
 This area previously shown on 160-10  
 NOTE:  
 ASSESSOR'S BLOCK NUMBERS SHOWN IN ELLIPSES  
 ASSESSOR'S PARCEL NUMBERS SHOWN IN CIRCLES

Drawn by CEB 7/29/98  
 Revised 3/17/97 DSR 1/11/99  
DSR 10/15/99