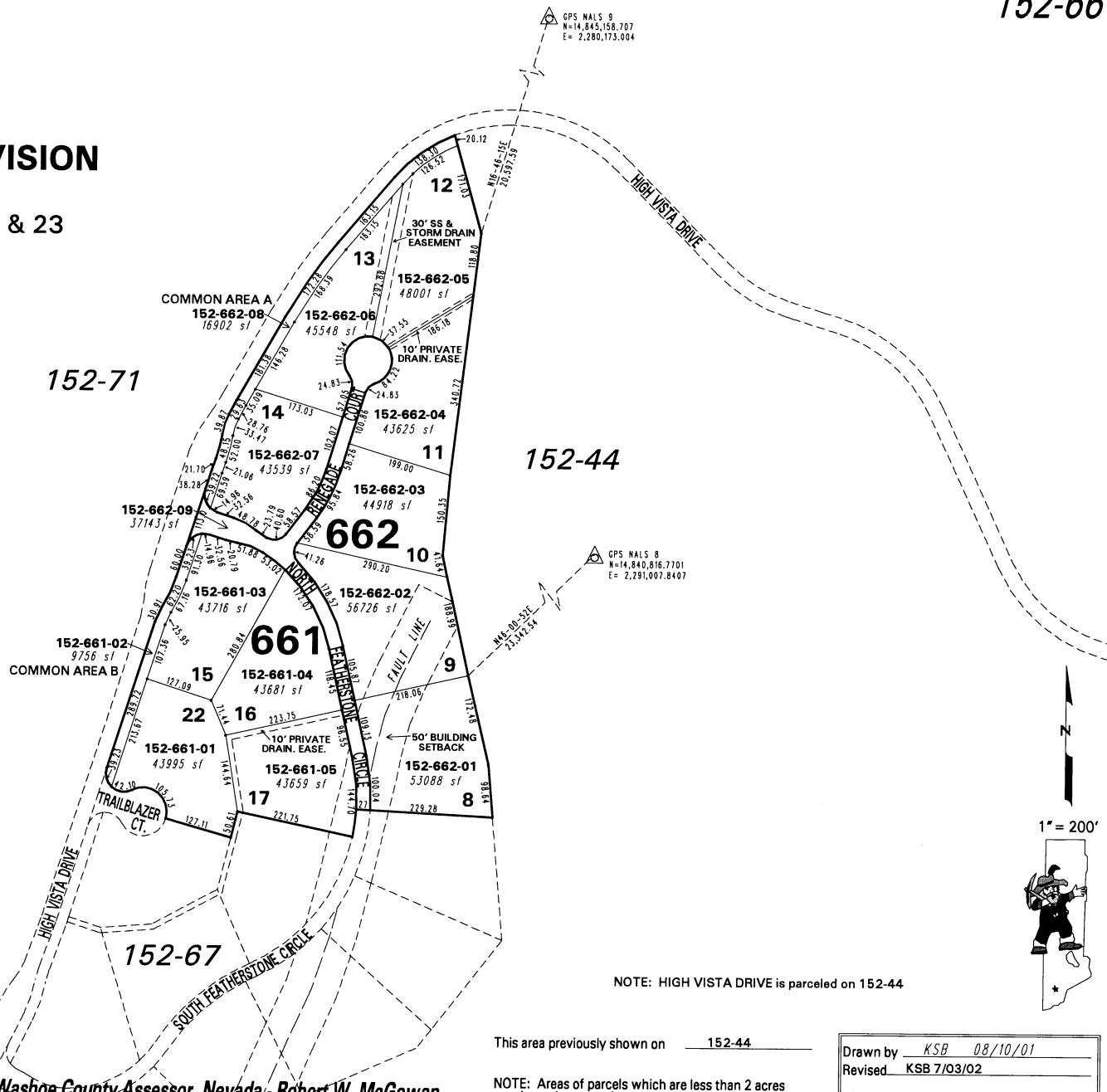
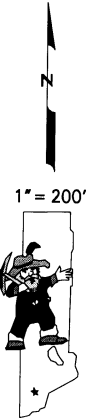


(#3981)  
**ARROWCREEK SUBDIVISION  
UNIT 20**  
PORTIONS OF SECTIONS 22 & 23  
T18N - R19E



GPS NALS 9  
N=14,845,158.707  
E= 2,280,173.004

GPS NALS 8  
N=14,840,816.7701  
E= 2,291,007.8407



NOTE: HIGH VISTA DRIVE is parceled on 152-44

NOTE: This map is prepared for the use of the Washoe County Assessor for assessment and illustrative purposes only. It does not represent a survey of the premises. No liability is assumed as to the sufficiency or the accuracy of the data delineated hereon.

Office of Washoe County Assessor, Nevada - Robert W. McGowan

This area previously shown on 152-44

Drawn by KSB 08/10/01  
Revised KSB 7/03/02

NOTE: Areas of parcels which are less than 2 acres are shown in square feet.