

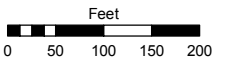
PORTION SE 1/4 SECTION 25
T18N - R19E

Assessor's Map Number

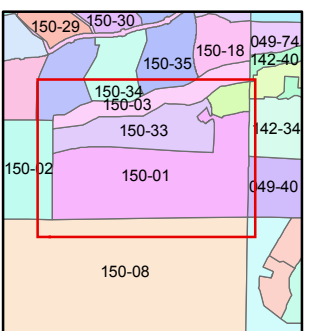
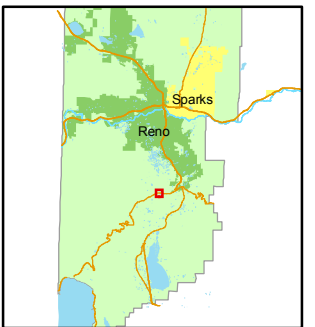
150-01

STATE OF NEVADA
WASHOE COUNTY
ASSESSOR'S OFFICE
Joshua G. Wilson, Assessor

1001 East Ninth Street
Building D
Reno, Nevada 89512
(775) 328-2231



1 inch = 200 feet



created by: KSB 2/04/2010

last updated: _____

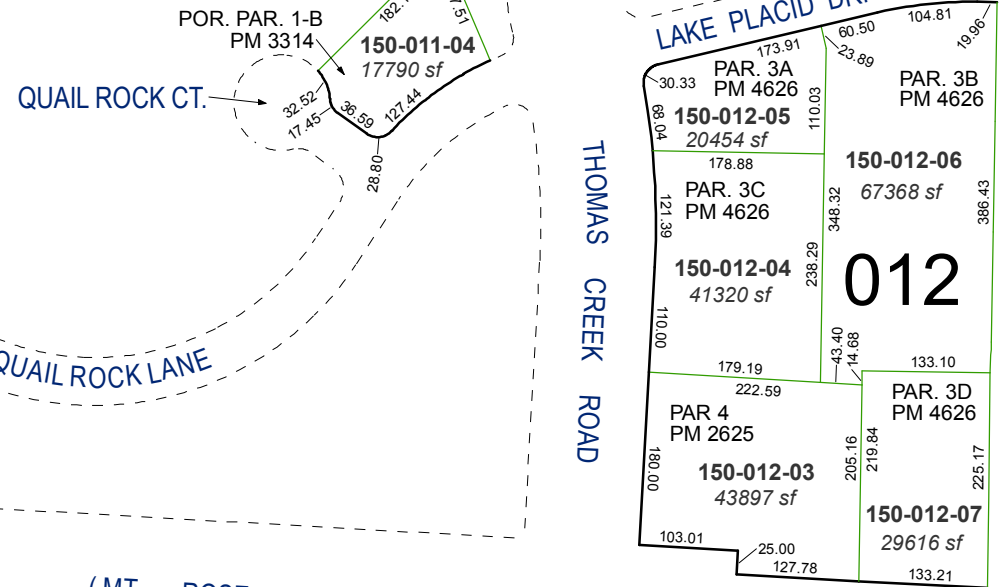
area previously shown on map(s)

049-21

NOTE: This map was prepared for the use of the Washoe County Assessor for assessment and illustrative purposes only. It does not represent a survey of the premises. No liability is assumed as to the sufficiency or accuracy of the data delineated hereon.

150-36

011



STATE ROUTE 431

(MT. ROSE HWY.)

013

