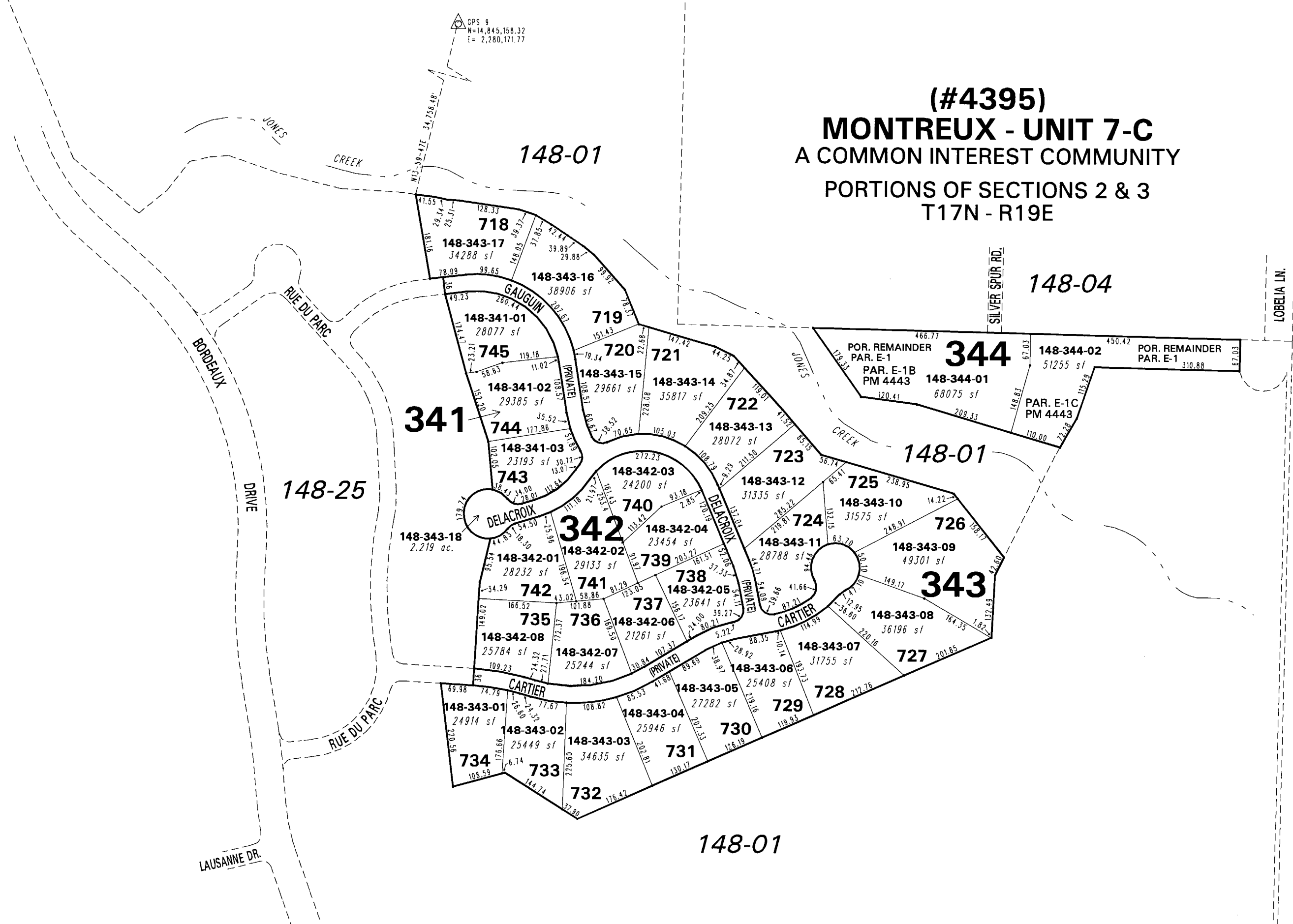


(#4395)
MONTREUX - UNIT 7-C
A COMMON INTEREST COMMUNITY
PORTIONS OF SECTIONS 2 & 3
T17N - R19E



NOTE: This map is prepared for the use of the Washoe County Assessor for assessment and illustrative purposes only. It does not represent a survey of the premises. No liability is assumed as to the sufficiency or the accuracy of the data delineated hereon.

Office of Washoe County Assessor, Nevada - Robert W. McGowan

This area previously shown on 148-01

NOTE: Areas of parcels which are less than 2 acres are shown in square feet.

Drawn by KSB 10/15/04
Revised KSB 9/30/05