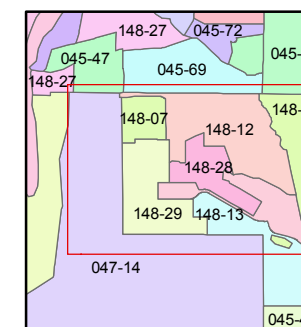
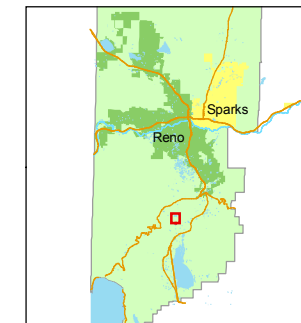




1 inch = 300 feet



created by: TWT 9/25/2009

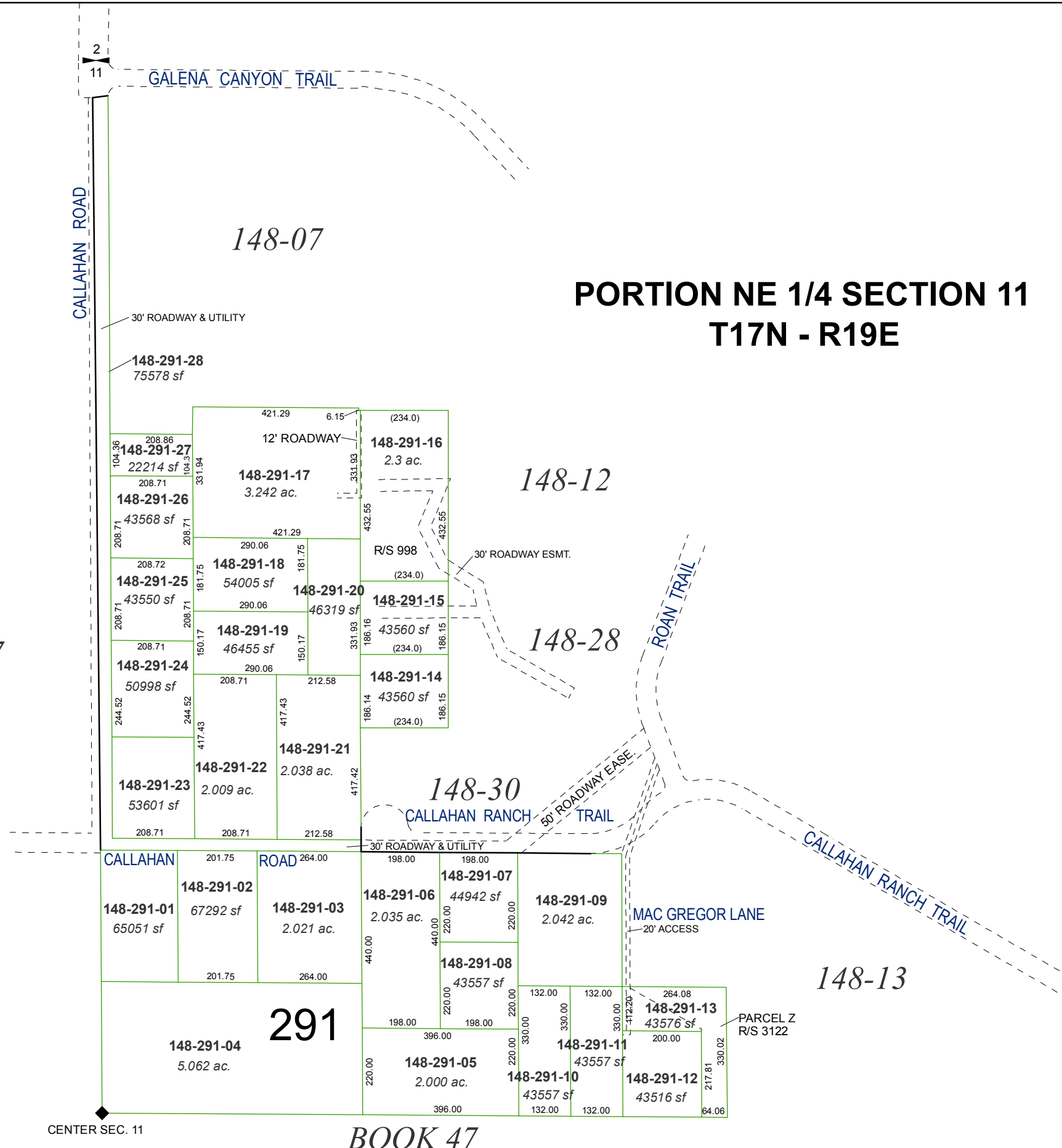
last updated: _____

area previously shown on map(s)
045-27 & 148-07

NOTE: This map was prepared for the use of the Washoe County Assessor for assessment and illustrative purposes only. It does not represent a survey of the premises. No liability is assumed as to the sufficiency or accuracy of the data delineated hereon.

PORTION NE 1/4 SECTION 11 T17N - R19E

BOOK 47



CENTER SEC. 11

BOOK 47

291