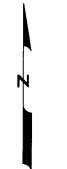
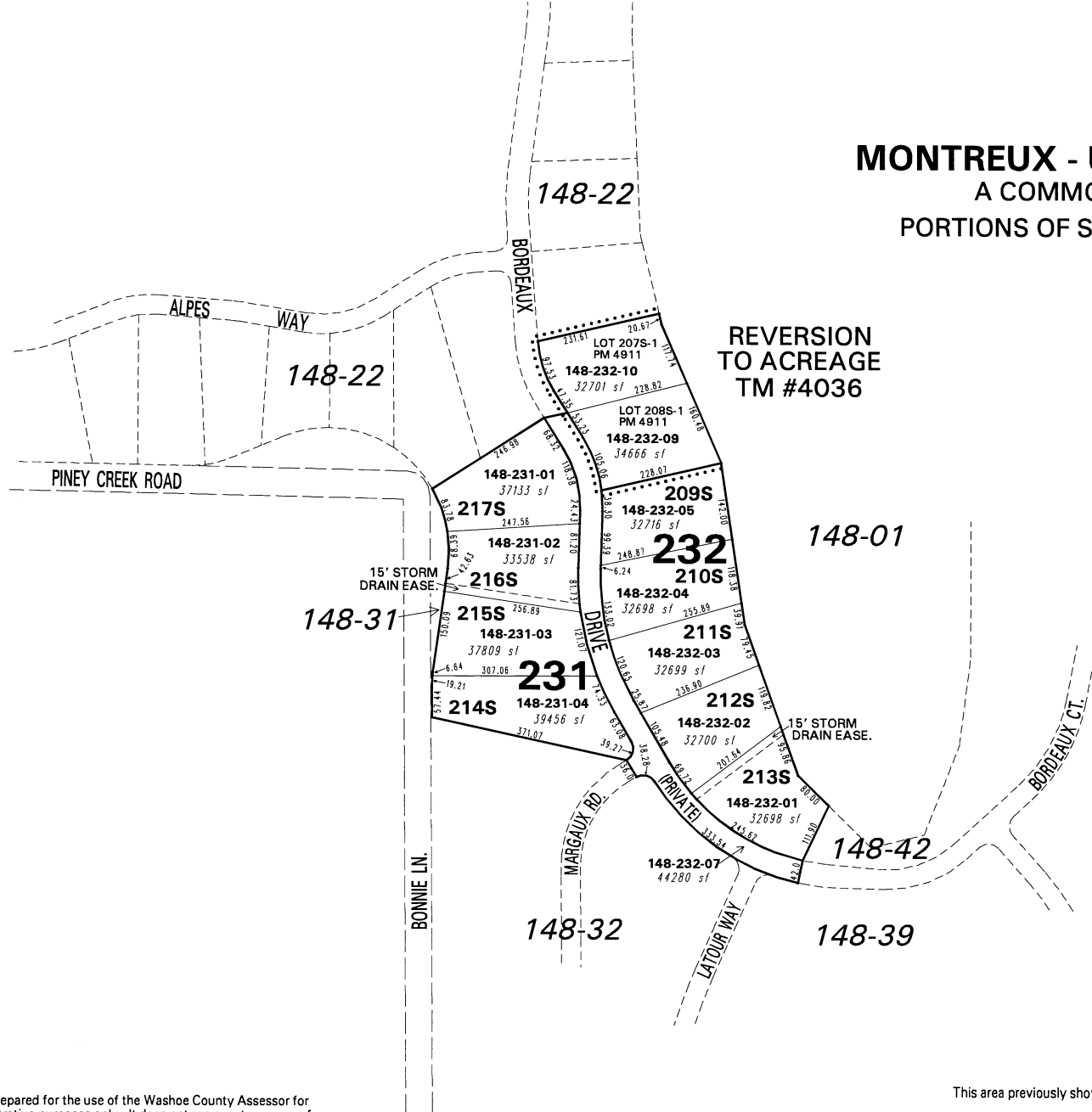


MONTREUX - UNIT 2 - SOUTH (#3894) A COMMON INTEREST COMMUNITY PORTIONS OF SECTIONS 10 & 11, T17N - R19E



1" = 200'



NOTE: This map is prepared for the use of the Washoe County Assessor for assessment and illustrative purposes only. It does not represent a survey of the premises. No liability is assumed as to the sufficiency or the accuracy of the data delineated hereon.

Office of Washoe County Assessor, Nevada - Joshua G. Wilson

This area previously shown on 47-01, 148-01

NOTE: Areas of parcels which are less than 2 acres are shown in square feet.

Drawn by	<u>KSB 02/02/01</u>
Revised	<u>KSB 6/07/08 KSB 8/07/08</u>