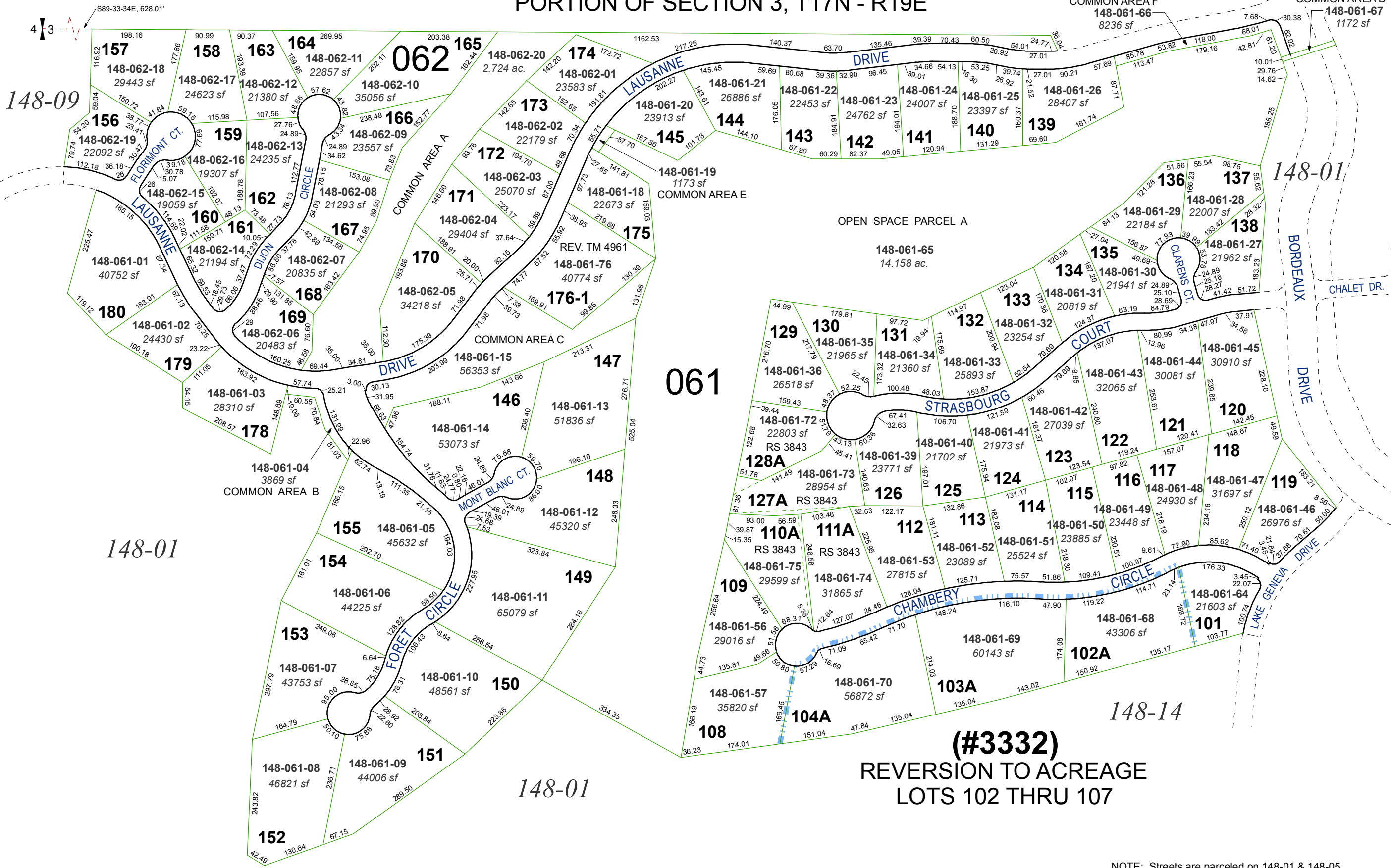


(#3296)
MONTREUX - UNIT 1
 A COMMON INTEREST COMMUNITY
 PORTION OF SECTION 3, T17N - R19E

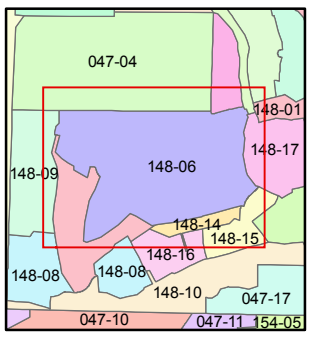
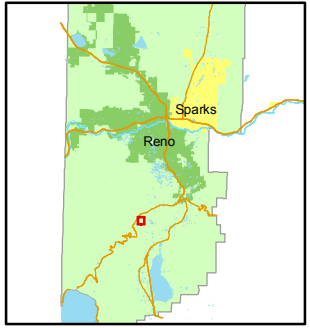
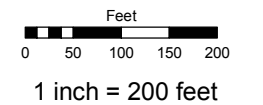
148-36



Assessor's Map Number
148-06

STATE OF NEVADA
WASHOE COUNTY
 ASSESSOR'S OFFICE
 Joshua G. Wilson, Assessor

1001 East Ninth Street
 Building D
 Reno, Nevada 89512
 (775) 328-2231



(#3332)
REVERSION TO ACREAGE
LOTS 102 THRU 107

NOTE: Streets are parceled on 148-01 & 148-05

created by: TWT 9/23/2009
 last updated: KSB 4/05/11
 area previously shown on map(s)
047-04

NOTE: This map was prepared for the use of the Washoe County Assessor for assessment and illustrative purposes only. It does not represent a survey of the premises. No liability is assumed as to the sufficiency or accuracy of the data delineated hereon.