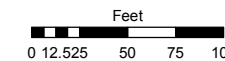
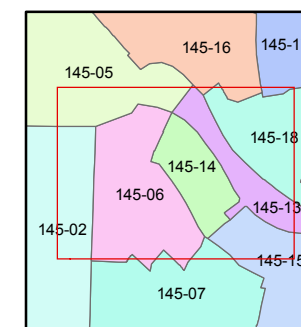
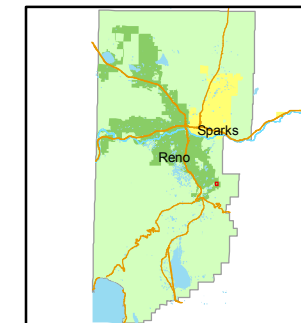


STATE OF NEVADA  
**WASHOE COUNTY**  
**ASSESSOR'S OFFICE**  
Joshua G. Wilson, Assessor

1001 East Ninth Street  
Building D  
Reno, Nevada 89512  
(775) 328-2231



1 inch = 100 feet



created by: NLH 3/24/2011

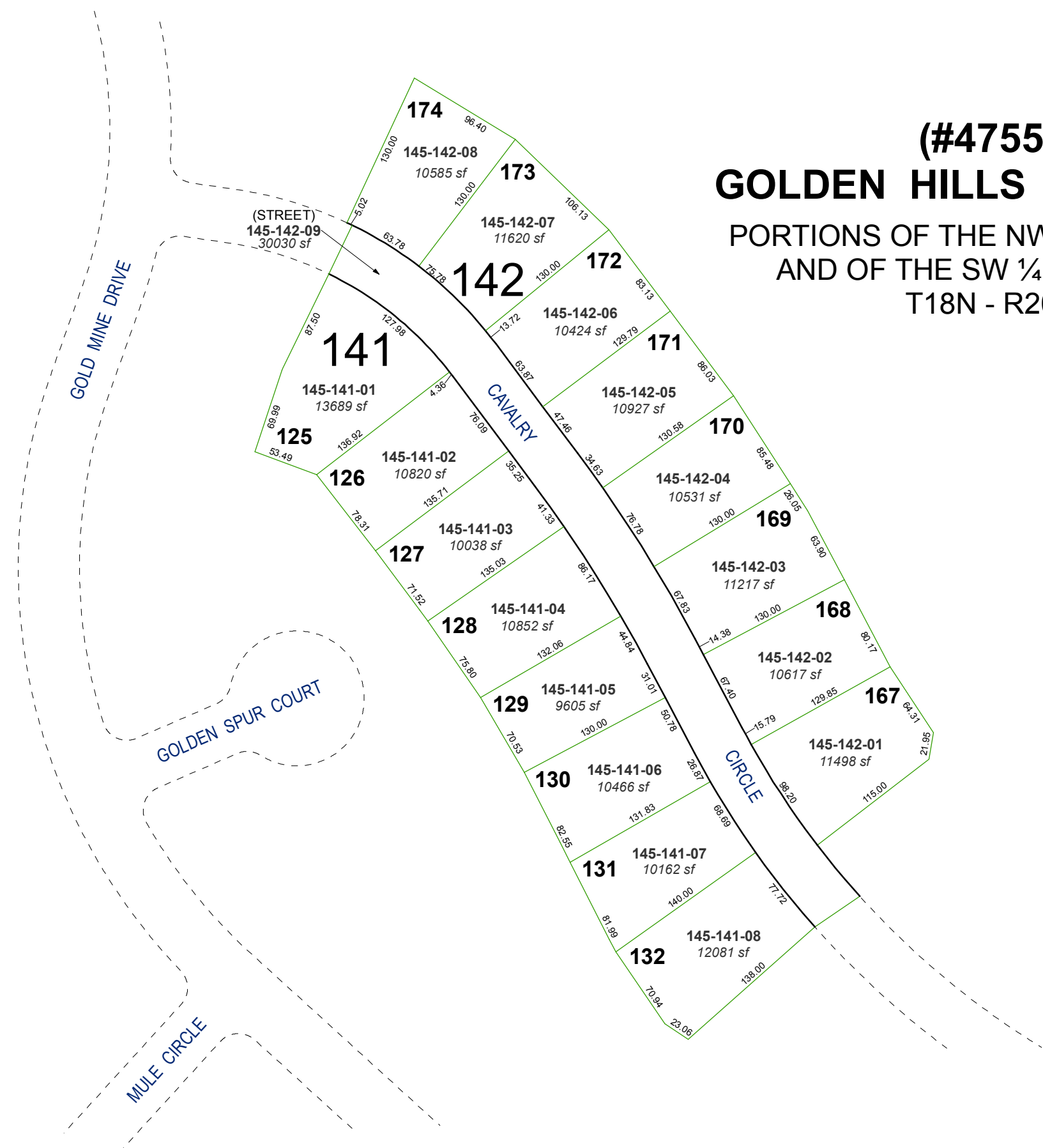
last updated: \_\_\_\_\_

area previously shown on map(s)

145-02

# (#4755) GOLDEN HILLS PHASE 2A

## PORTIONS OF THE NW ¼ OF SEC. 14 AND OF THE SW ¼ OF SEC. 11 T18N - R20E



NOTE: This map was prepared for the use of the Washoe County Assessor for assessment and illustrative purposes only. It does not represent a survey of the premises. No liability is assumed as to the sufficiency or accuracy of the data delineated herein.