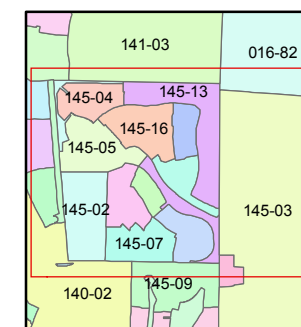
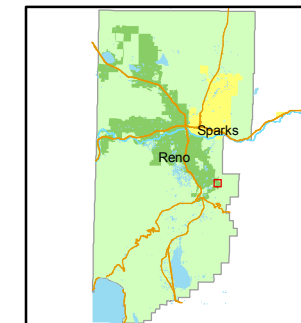


1 inch = 300 feet



created by: NLH 3/24/2011

last updated: \_\_\_\_\_

area previously shown on map(s)

145-02

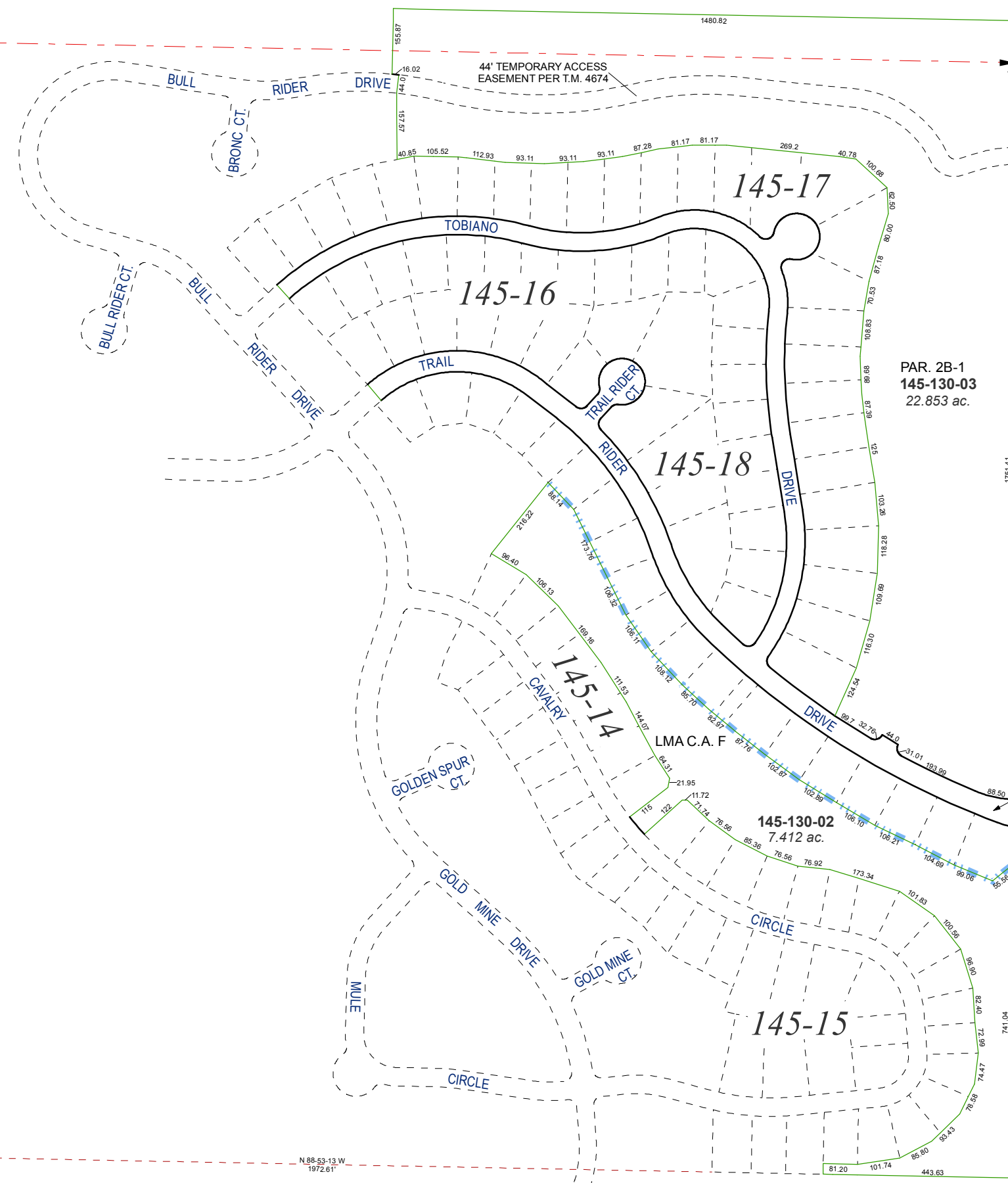
NOTE: This map was prepared for the use of the Washoe County Assessor for assessment and illustrative purposes only. It does not represent a survey of the premises. No liability is assumed as to the sufficiency or accuracy of the data delineated herein.

**(#4783)**  
**GOLDEN HILLS PHASE 2B**  
PORTIONS OF THE NW ¼ OF SEC. 14  
AND OF THE SW ¼ OF SEC. 11  
T18N - R20E

(STREETS)  
**145-130-04**  
5.08 ac.

**(#4755)**  
**GOLDEN HILLS PHASE 2A**

NOTES  
LMA = LANDSCAPE MAINTENANCE ASSOCIATION  
C.A. = COMMON AREA



PAR. 2B-1  
**145-130-03**  
22.853 ac.

145-17

145-16

145-18

145-14

145-15

LMA C.A. F

**145-130-02**  
7.412 ac.

10 11  
15 14

11 14

15 14

N 88-53-13 W  
1972.61'