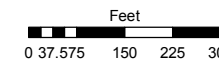
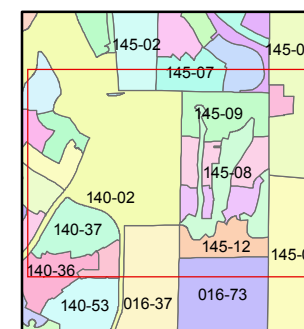
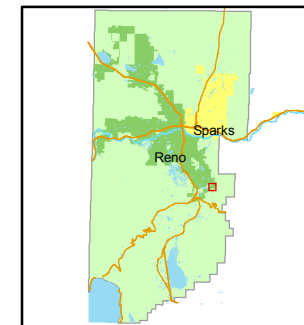


STATE OF NEVADA
WASHOE COUNTY
ASSESSOR'S OFFICE
Joshua G. Wilson, Assessor

1001 East Ninth Street
Building D
Reno, Nevada 89512
(775) 328-2231



1 inch = 300 feet



created by: NLH 3/22/2011

last updated: _____

area previously shown on map(s)

145-01

NOTE: This map was prepared for the use of the Washoe County Assessor for assessment and illustrative purposes only. It does not represent a survey of the premises. No liability is assumed as to the sufficiency or accuracy of the data delineated herein.

(#4701) McCAULEY RANCH ESTATES

PORTIONS OF THE SW ¼ OF SEC. 14
AND THE SE ¼ OF SEC. 15
T18N - R20E

POR. PAR. 12
R.S. 4001
145-080-06
6454 sf

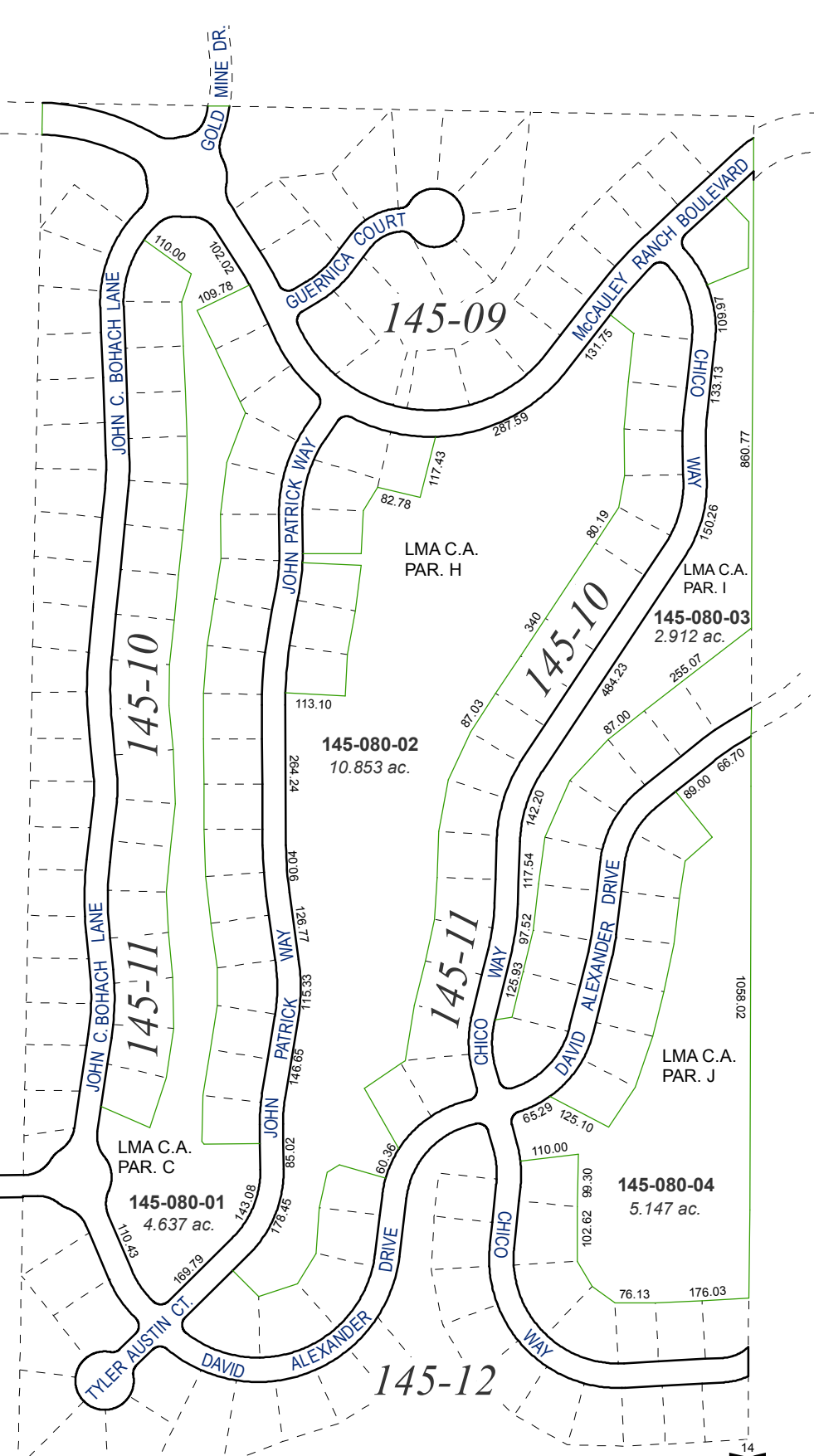
McCAULEY RANCH BOULEVARD

RIO WRANGLER PKWY.

WESTERN SKIES DR.

STANLEY LANE 145-080-05 12.190 ac.

NOTES
LMA = LANDSCAPE MAINTENANCE ASSOCIATION
C.A. = COMMON AREA



14
23