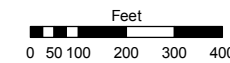


Assessor's Map Number

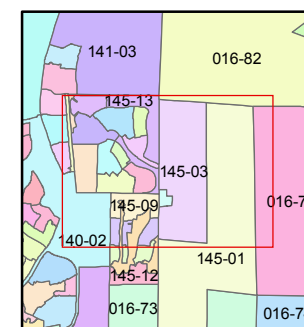
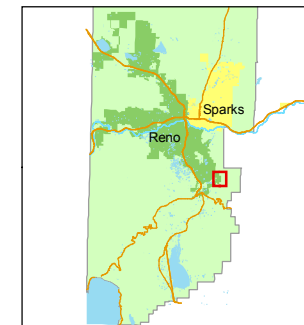
**145-03**

STATE OF NEVADA  
**WASHOE COUNTY**  
ASSESSOR'S OFFICE  
Joshua G. Wilson, Assessor

1001 East Ninth Street  
Building D  
Reno, Nevada 89512  
(775) 328-2231



1 inch = 400 feet



created by: CFB 12/02/2010

last updated: \_\_\_\_\_

area previously shown on map(s) \_\_\_\_\_

NOTE: This map was prepared for the use of the Washoe County Assessor for assessment and illustrative purposes only. It does not represent a survey of the premises. No liability is assumed as to the sufficiency or accuracy of the data delineated hereon.

16-82

POR. OF SECTION 14  
T18N - R20E



145-13

145-18

145-01

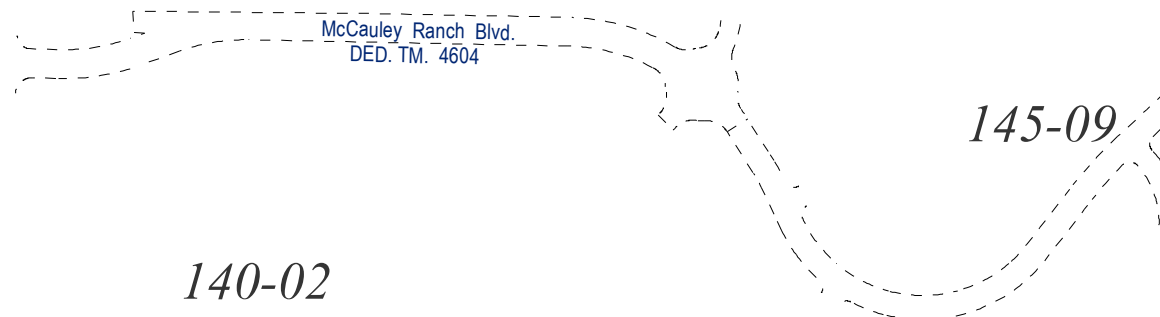
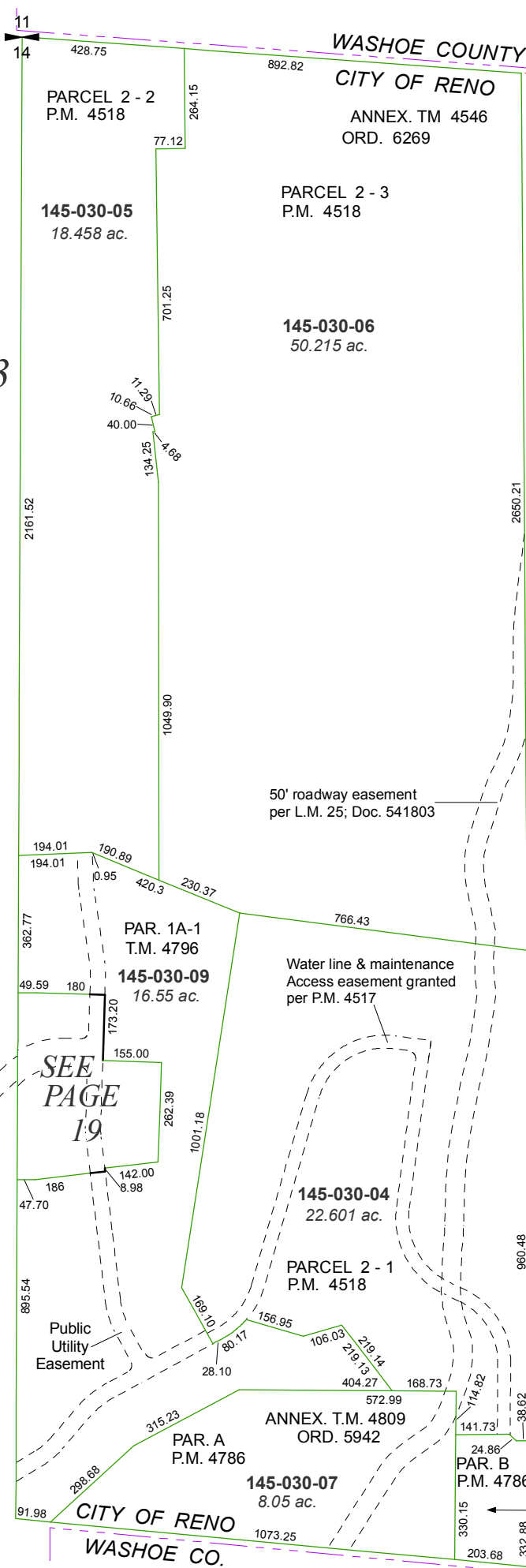
016-72

140-02

145-09

145-08

145-10



SEE  
PAGE  
19

WASHOE CO.