

(#4227)
BEAR CREEK SUBDIVISION

PORTION SE 1/4 SEC. 30 &
NE 1/4 SEC. 31, T18N - R20E

49-40

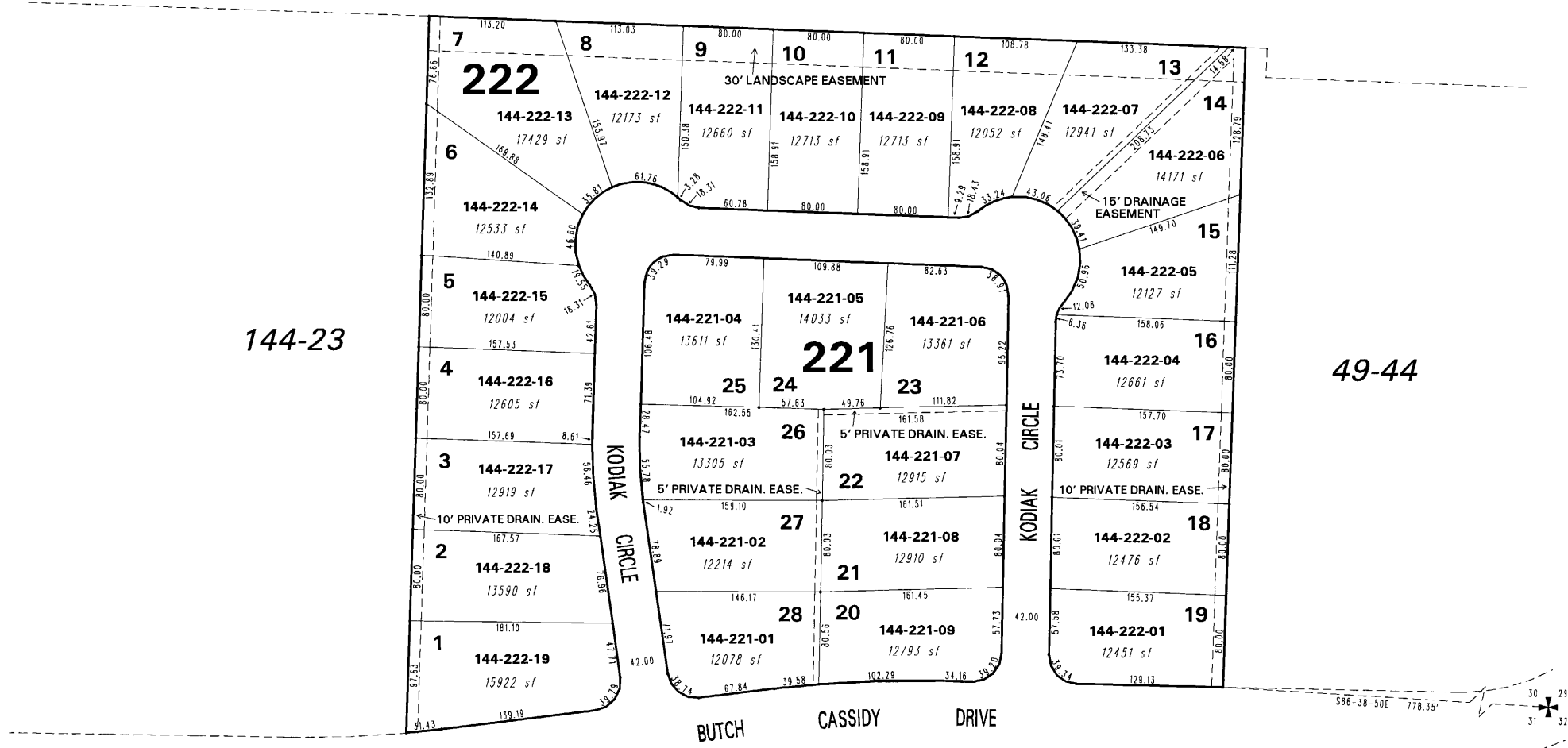
BOOK 142

MOUNT ROSE HIGHWAY

(STATE ROUTE 431)

144-23

49-44



1" = 100'



NOTE: This map is prepared for the use of the Washoe County Assessor for assessment and illustrative purposes only. It does not represent a survey of the premises. No liability is assumed as to the sufficiency or the accuracy of the data delineated hereon.

Office of Washoe County Assessor, Nevada - Robert W. McGowan

This area previously shown on 49-44

NOTE: Areas of parcels which are less than 2 acres are shown in square feet.

Drawn by KSB 07/10/03
 Revised KSB 8/01/03 KSB 10/21/04