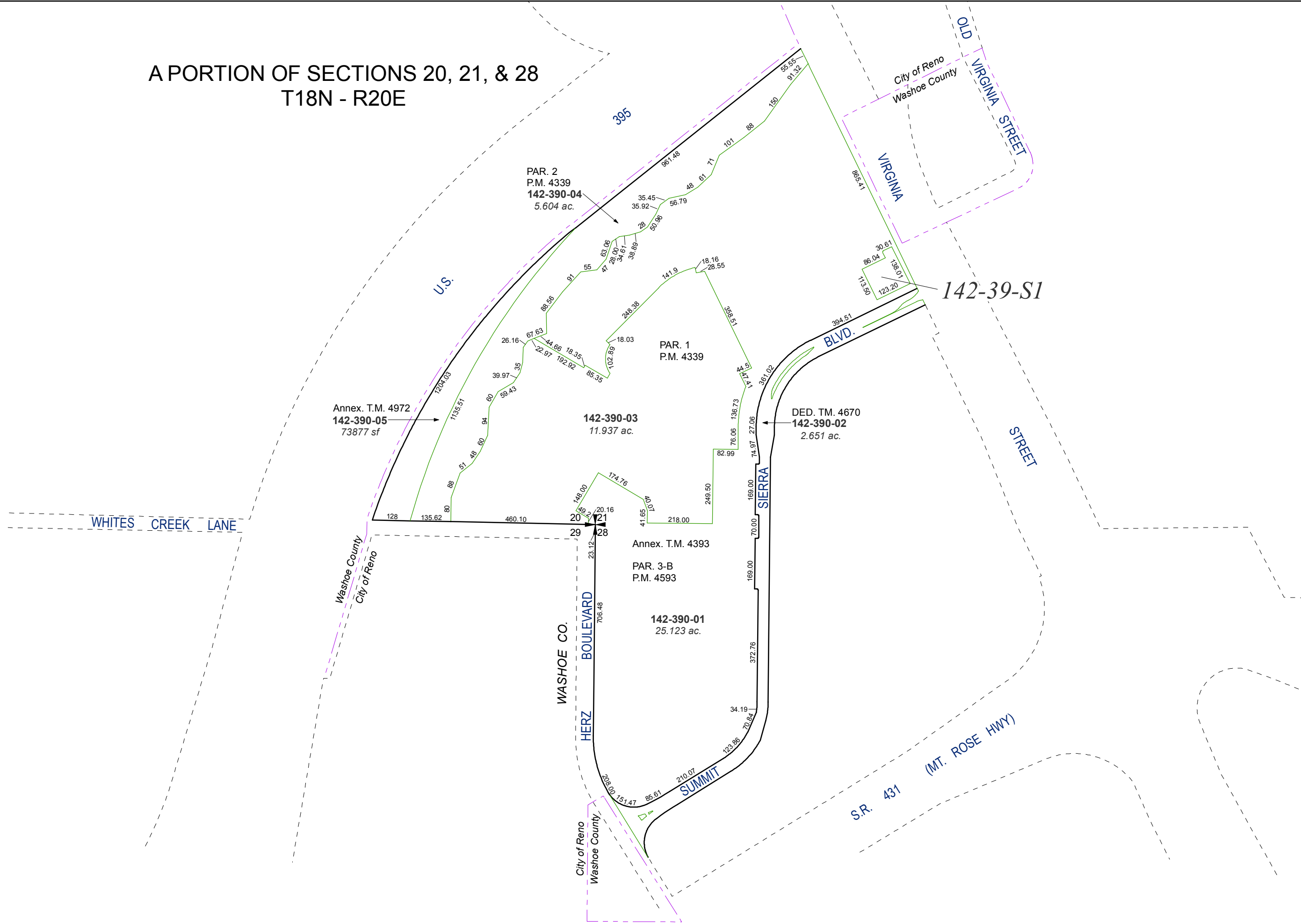


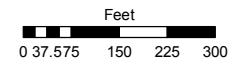
A PORTION OF SECTIONS 20, 21, & 28  
T18N - R20E



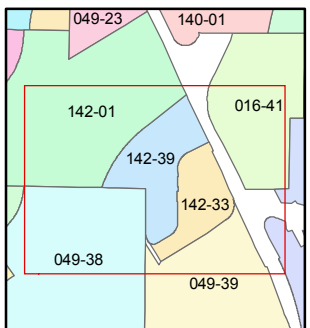
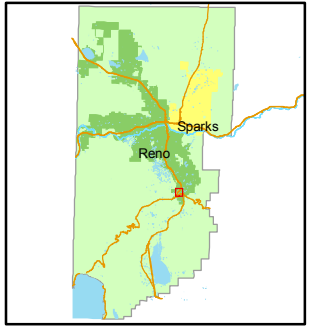
Assessor's Map Number  
**142-39**

STATE OF NEVADA  
**WASHOE COUNTY**  
ASSESSOR'S OFFICE  
Joshua G. Wilson, Assessor

1001 East Ninth Street  
Building D  
Reno, Nevada 89512  
(775) 328-2231



1 inch = 300 feet



created by: NLH 7/19/2011

last updated: \_\_\_\_\_

area previously shown on map(s)  
049-23

NOTE: This map was prepared for the use of the Washoe County Assessor for assessment and illustrative purposes only. It does not represent a survey of the premises. No liability is assumed as to the sufficiency or accuracy of the data delineated herein.