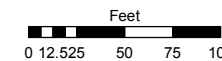
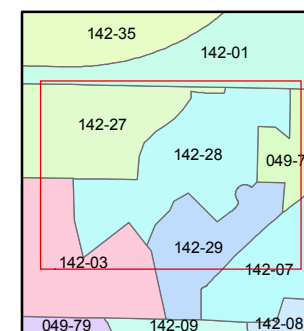
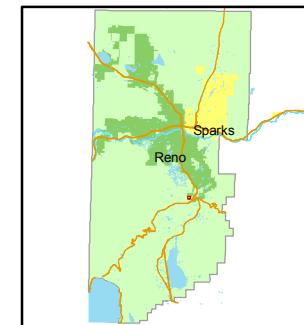


STATE OF NEVADA
WASHOE COUNTY
ASSESSOR'S OFFICE
Joshua G. Wilson, Assessor

1001 East Ninth Street
Building D
Reno, Nevada 89512
(775) 328-2231



1 inch = 100 feet



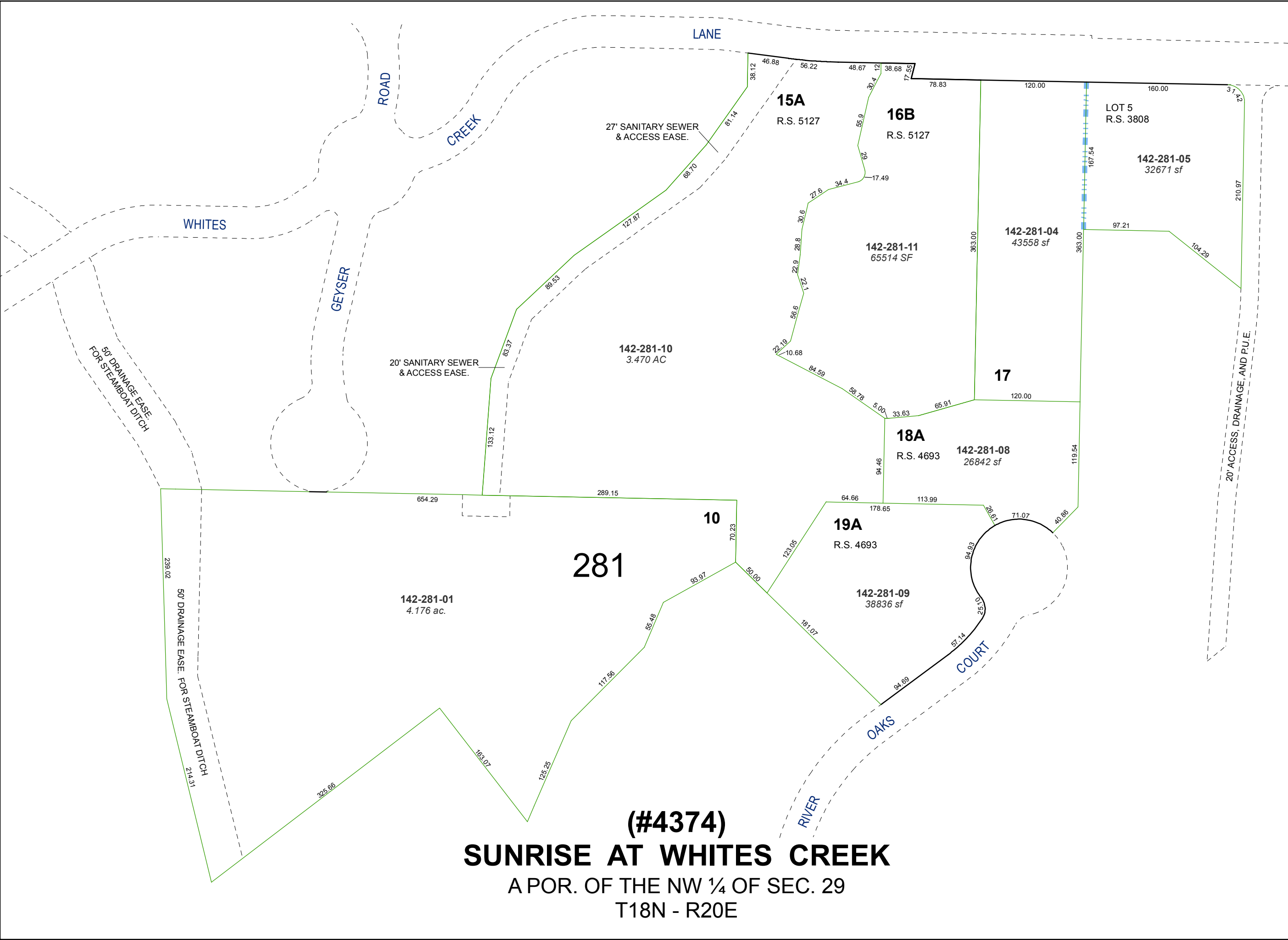
created by: CFB 3/23/2009

last updated: NLH 1/20/2011

area previously shown on map(s)

049-25

NOTE: This map was prepared for the use of the Washoe County Assessor for assessment and illustrative purposes only. It does not represent a survey of the premises. No liability is assumed as to the sufficiency or accuracy of the data delineated herein.



(#4374)
SUNRISE AT WHITES CREEK
A POR. OF THE NW ¼ OF SEC. 29
T18N - R20E