

GOVERNMENT HOMESITES

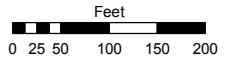
A PORTION OF THE NW ¼ OF SECTION 30 T18N - R20E

Assessor's Map Number

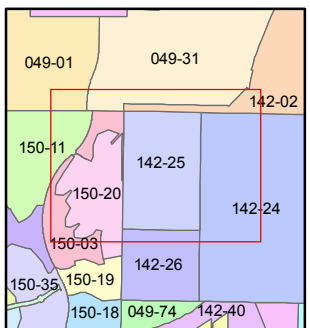
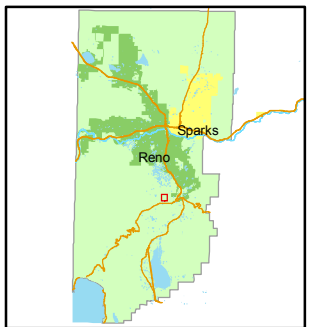
142-25

STATE OF NEVADA
WASHOE COUNTY
ASSESSOR'S OFFICE
 Joshua G. Wilson, Assessor

1001 East Ninth Street
 Building D
 Reno, Nevada 89512
 (775) 328-2231



1 inch = 200 feet



created by: CFB 03/23/2010

last updated: NLH 10/06/2010

area previously shown on map(s)

049-37

NOTE: This map was prepared for the use of the Washoe County Assessor for assessment and illustrative purposes only. It does not represent a survey of the premises. No liability is assumed as to the sufficiency or accuracy of the data delineated hereon.

