

# GOVERNMENT HOMESITES

## PORTION OF THE NORTH 1/2 OF SECTION 30, T18N - R20E

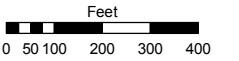
Per Washoe Co. Engineering: Each of these lots has a 33' access easement on all 4 sides

Assessor's Map Number

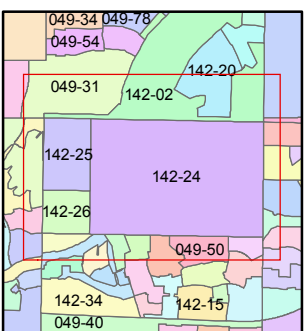
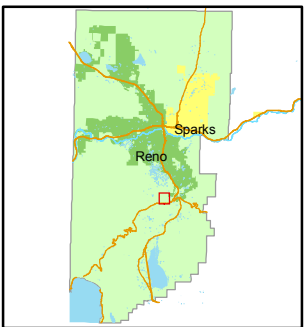
**142-24**

STATE OF NEVADA  
**WASHOE COUNTY**  
**ASSESSOR'S OFFICE**  
 Joshua G. Wilson, Assessor

1001 East Ninth Street  
 Building D  
 Reno, Nevada 89512  
 (775) 328-2231



1 inch = 400 feet



created by: NLH 8/05/2009

last updated: \_\_\_\_\_

area previously shown on map(s)

049-37

NOTE: This map was prepared for the use of the Washoe County Assessor for assessment and illustrative purposes only. It does not represent a survey of the premises. No liability is assumed as to the sufficiency or accuracy of the data delineated hereon.

