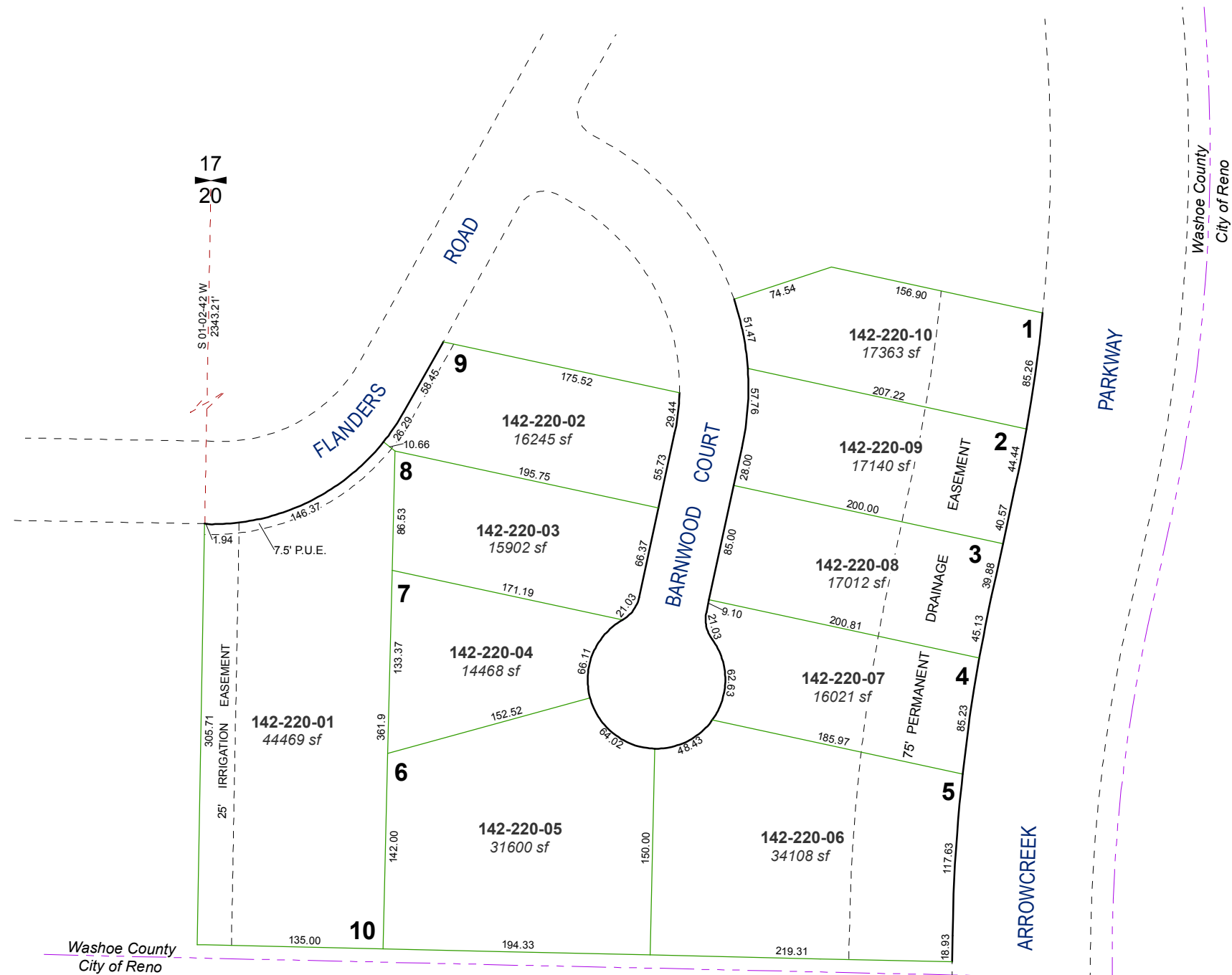


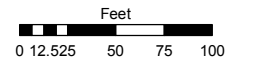
(#4135)
WEDGE MEADOWS UNIT 5
 A POR. OF THE W 1/2 OF THE NE 1/4 OF SEC. 20
 T18N - R20E



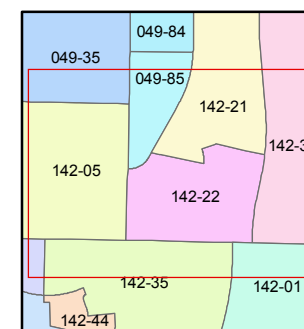
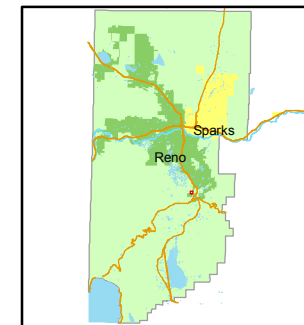
Assessor's Map Number
142-22

STATE OF NEVADA
WASHOE COUNTY
ASSESSOR'S OFFICE
 Joshua G. Wilson, Assessor

1001 East Ninth Street
 Building D
 Reno, Nevada 89512
 (775) 328-2231



1 inch = 100 feet



created by: NLH 1/19/2011

last updated: _____

area previously shown on map(s)
049-23

NOTE: This map was prepared for the use of the Washoe County Assessor for assessment and illustrative purposes only. It does not represent a survey of the premises. No liability is assumed as to the sufficiency or accuracy of the data delineated herein.