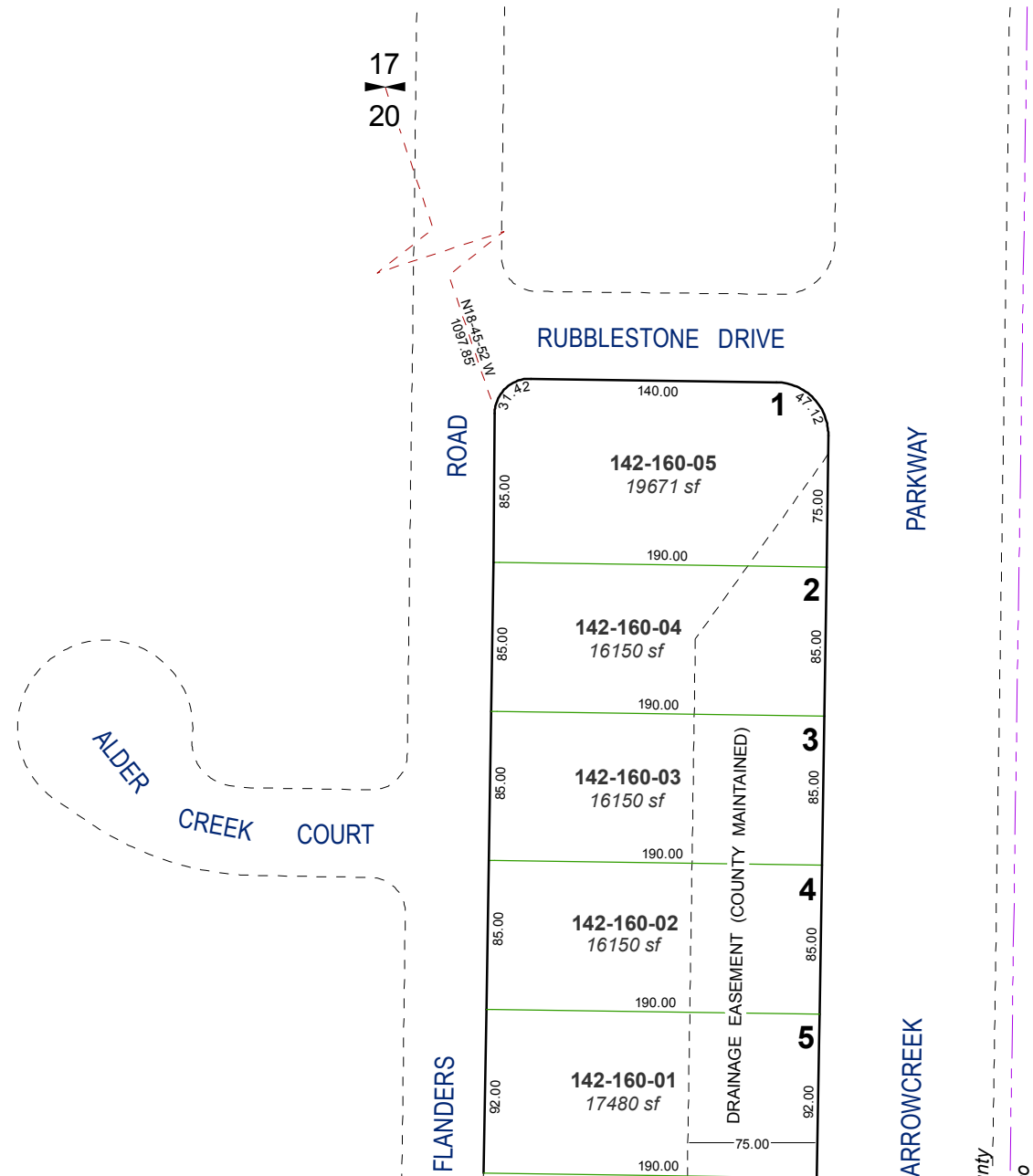


**(#3780)**  
**WEDGE MEADOWS UNIT 3**  
 A POR. OF THE W ½ OF THE NE ¼ OF SEC. 20  
 T18N - R20E

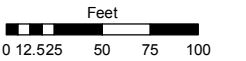


Assessor's Map Number

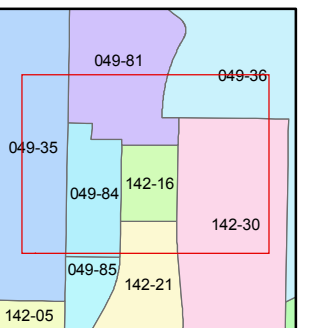
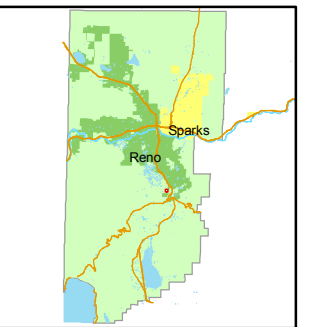
**142-16**

STATE OF NEVADA  
**WASHOE COUNTY**  
**ASSESSOR'S OFFICE**  
 Joshua G. Wilson, Assessor

1001 East Ninth Street  
 Building D  
 Reno, Nevada 89512  
 (775) 328-2231



1 inch = 100 feet



created by: NLH 1/18/2011

last updated: \_\_\_\_\_

area previously shown on map(s)

049-23

NOTE: This map was prepared for the use of the Washoe County Assessor for assessment and illustrative purposes only. It does not represent a survey of the premises. No liability is assumed as to the sufficiency or accuracy of the data delineated herein.