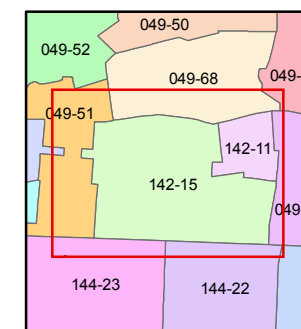
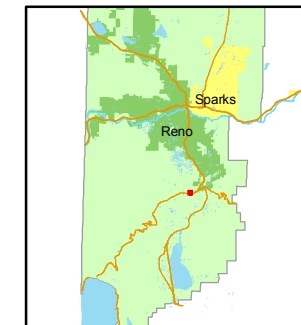


1 inch = 100 feet



created by: KSB 2/04/2010

last updated: _____

area previously shown on map(s)

049-40

NOTE: This map was prepared for the use of the Washoe County Assessor for assessment and illustrative purposes only. It does not represent a survey of the premises. No liability is assumed as to the sufficiency or accuracy of the data delineated hereon.

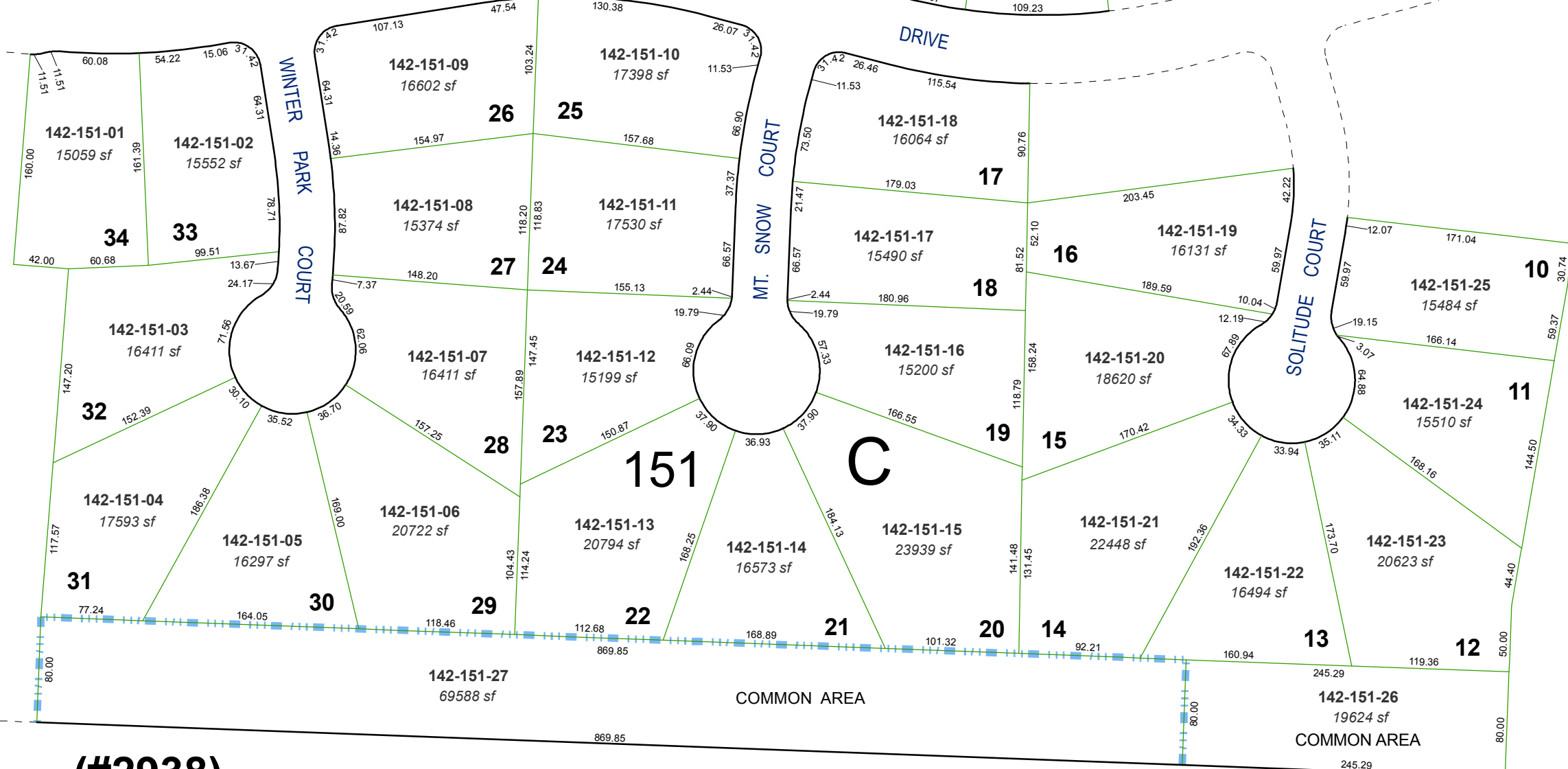
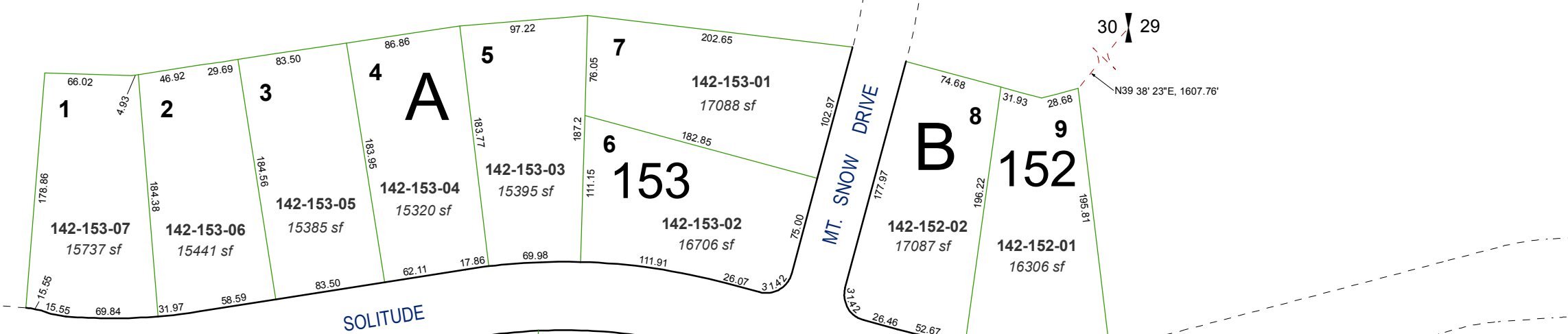
(#3754)

LANCER ESTATES UNIT 10

PORTION SE 1/4 SECTION 30, T18N - R20E

30 | 29

N39 38' 23"E, 1607.76'



(#2938)

LANCER ESTATES UNIT 5

STATE ROUTE 431