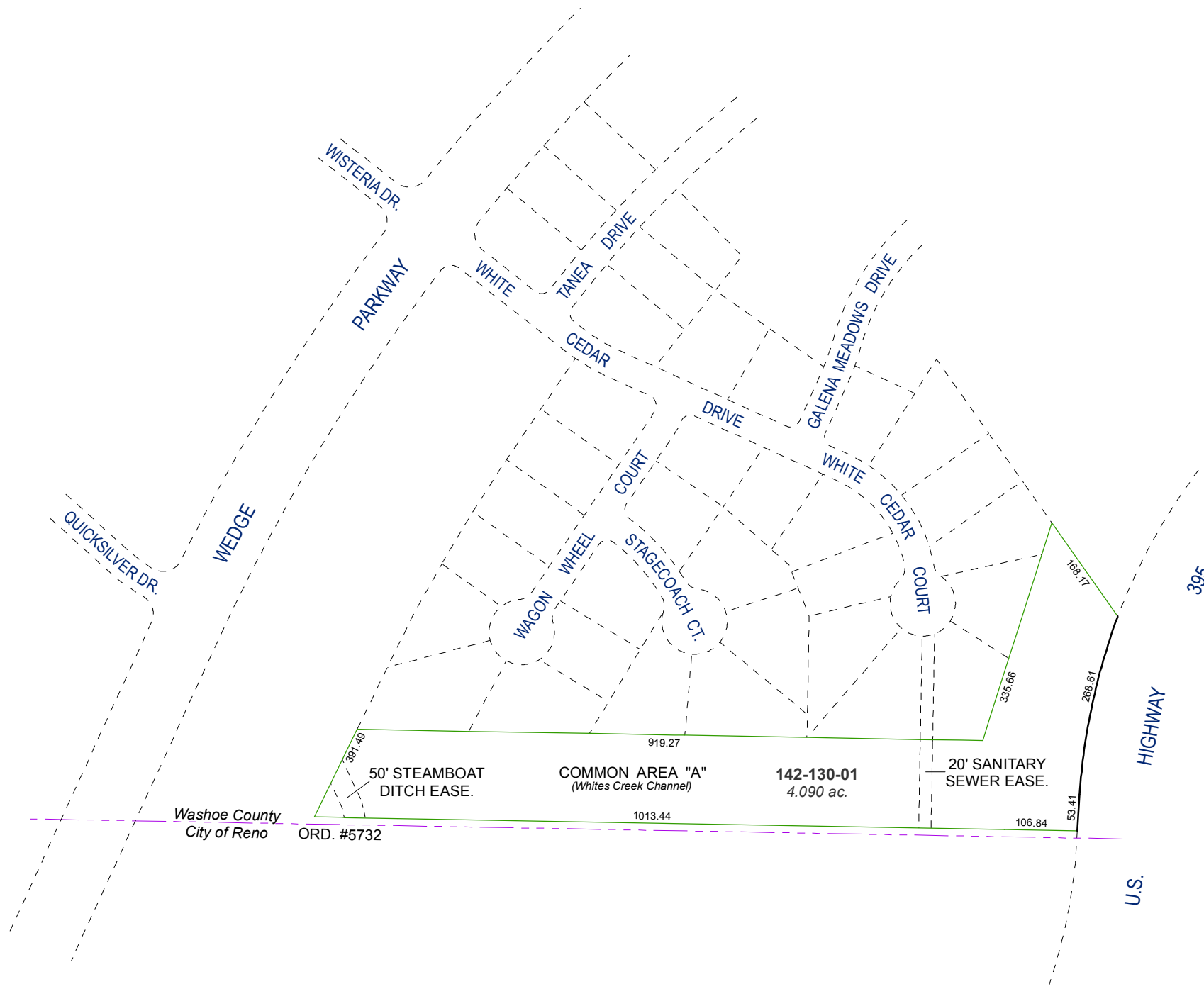
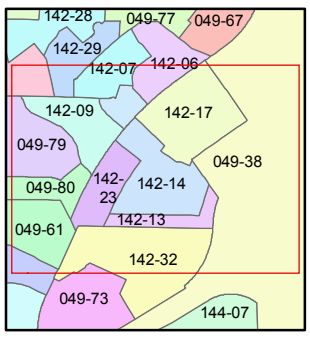
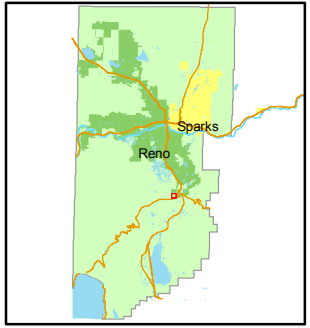
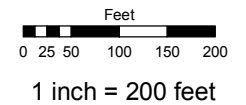


**(#3634)**  
**GALENA MEADOWS - PHASE 1**  
 A POR. OF THE N ½ OF SEC. 29  
 T18N - R20E



Assessor's Map Number  
**142-13**

STATE OF NEVADA  
**WASHOE COUNTY**  
**ASSESSOR'S OFFICE**  
 Joshua G. Wilson, Assessor  
 1001 East Ninth Street  
 Building D  
 Reno, Nevada 89512  
 (775) 328-2231



created by: NLH 1/14/2011  
 last updated: \_\_\_\_\_  
 area previously shown on map(s)  
049-38

NOTE: This map was prepared for the use of the Washoe County Assessor for assessment and illustrative purposes only. It does not represent a survey of the premises. No liability is assumed as to the sufficiency or accuracy of the data delineated herein.