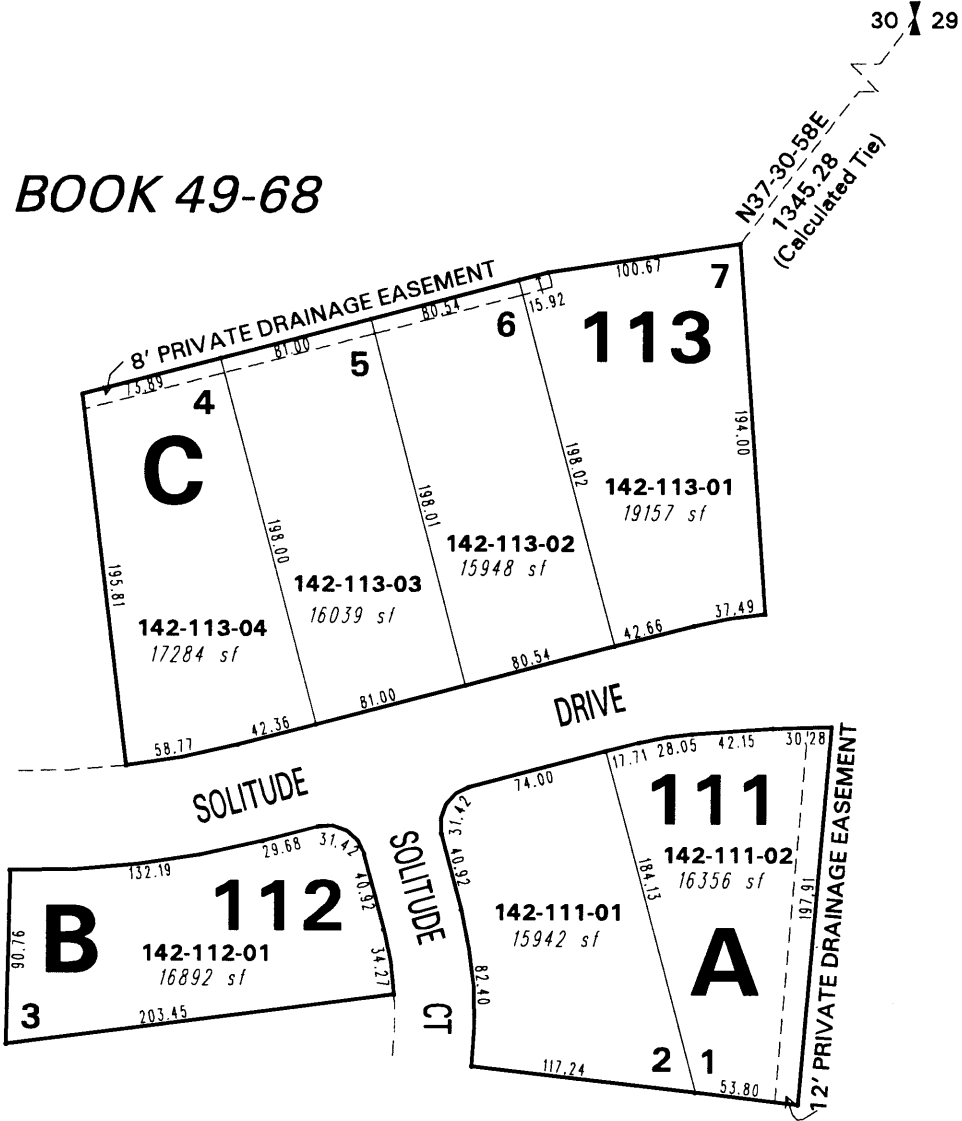


BOOK 49-68

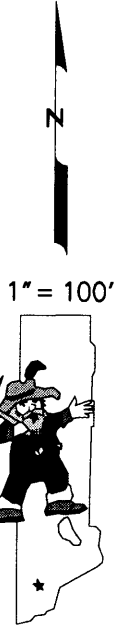
(#3456)
LANCER ESTATES UNIT 9
PORTION SE 1/4 SEC. 30
T18N - R20E

142-15



BOOK 49-43

142-15



NOTE: This map is prepared for the use of the Washoe County Assessor for assessment and illustrative purposes only. It does not represent a survey of the premises. No liability is assumed as to the sufficiency or the accuracy of the data delineated hereon.

Office of Washoe County Assessor, Nevada - Robert W. McGowan

This area previously shown on 49-40

NOTE: Areas of parcels which are less than 2 acres are shown in square feet.

Drawn by	10/14/97 TJF
Revised	CFB 9/29/99 HCS 11/9/01
ARC INFO 8.0.1 WINDOWS NT WORKSTATION 4.0	