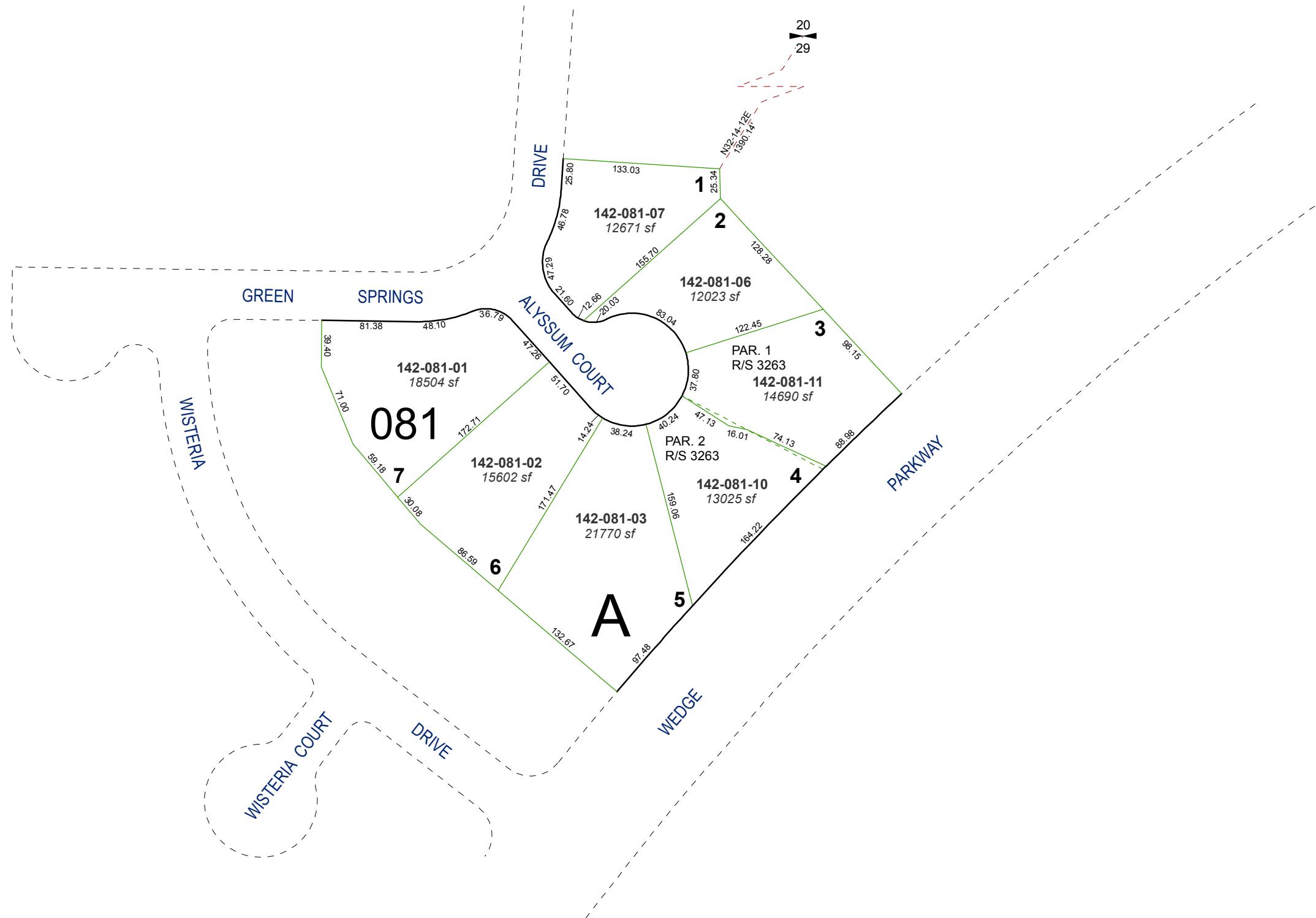


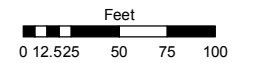
(#3319)
PINE TREE RANCH SUBDIVISION - UNIT 5
 A POR. OF THE N ½ OF SEC. 29
 T18N - R20E



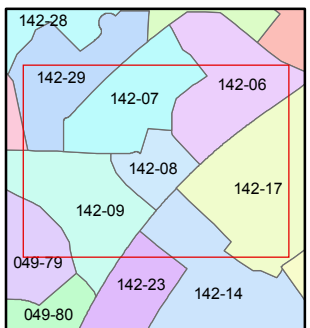
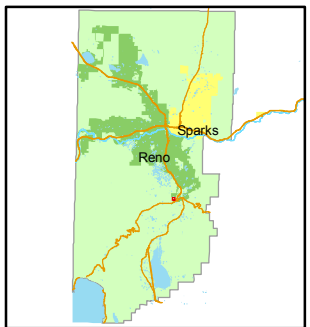
Assessor's Map Number
142-08

STATE OF NEVADA
WASHOE COUNTY
ASSESSOR'S OFFICE
 Joshua G. Wilson, Assessor

1001 East Ninth Street
 Building D
 Reno, Nevada 89512
 (775) 328-2231



1 inch = 100 feet



created by: NLH 1/13/2011

last updated: _____

area previously shown on map(s)
049-25

NOTE: This map was prepared for the use of the Washoe County Assessor for assessment and illustrative purposes only. It does not represent a survey of the premises. No liability is assumed as to the sufficiency or accuracy of the data delineated herein.