

(#3230)
WHITES CREEK ESTATES UNIT 2
PORTION OF THE NW 1/4 OF SECTION 20
T18N - R20E

Gap ownership unknown - Gap due to double section corner - see pg. 49-35 or PM 4194 for details

142-12

142-02

49-84

49-85

142-18

142-02

SILVER

WOLF

ROAD

DRIVE

THUNDERBOLT

CITY OF RENO

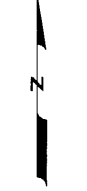
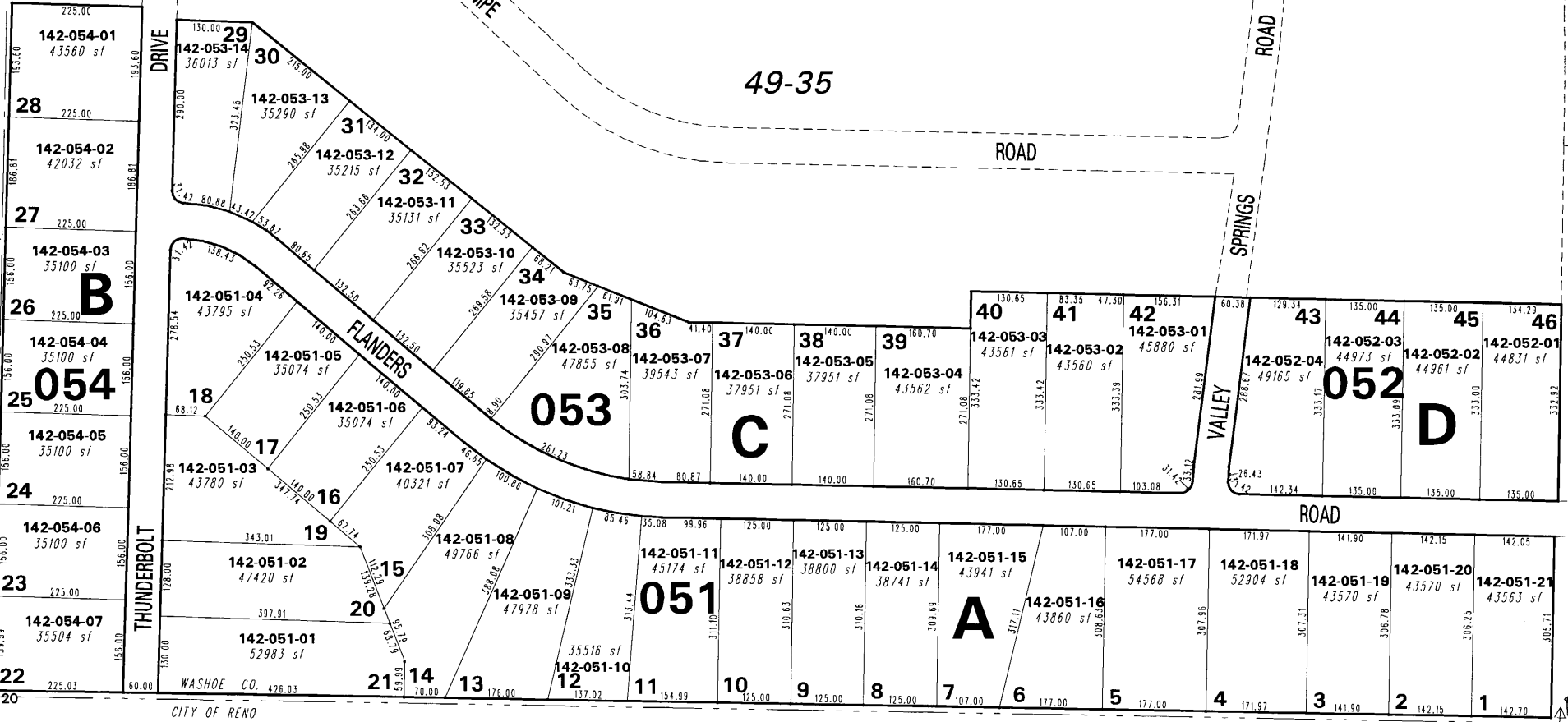
LAMPE

FLANDERS

SPRINGS

VALLEY

ROAD



1" = 200'



142-35

142-38

142-35

142-22

NOTE: This map is prepared for the use of the Washoe County Assessor for assessment and illustrative purposes only. It does not represent a survey of the premises. No liability is assumed as to the sufficiency or the accuracy of the data delineated hereon.

Office of Washoe County Assessor, Nevada - Robert W. McGowan

This area previously shown on _____

NOTE: Areas of parcels which are less than 2 acres are shown in square feet.

Drawn by TWT 06/23/04
 Revised PK 3/29/05 PK 4/20/06