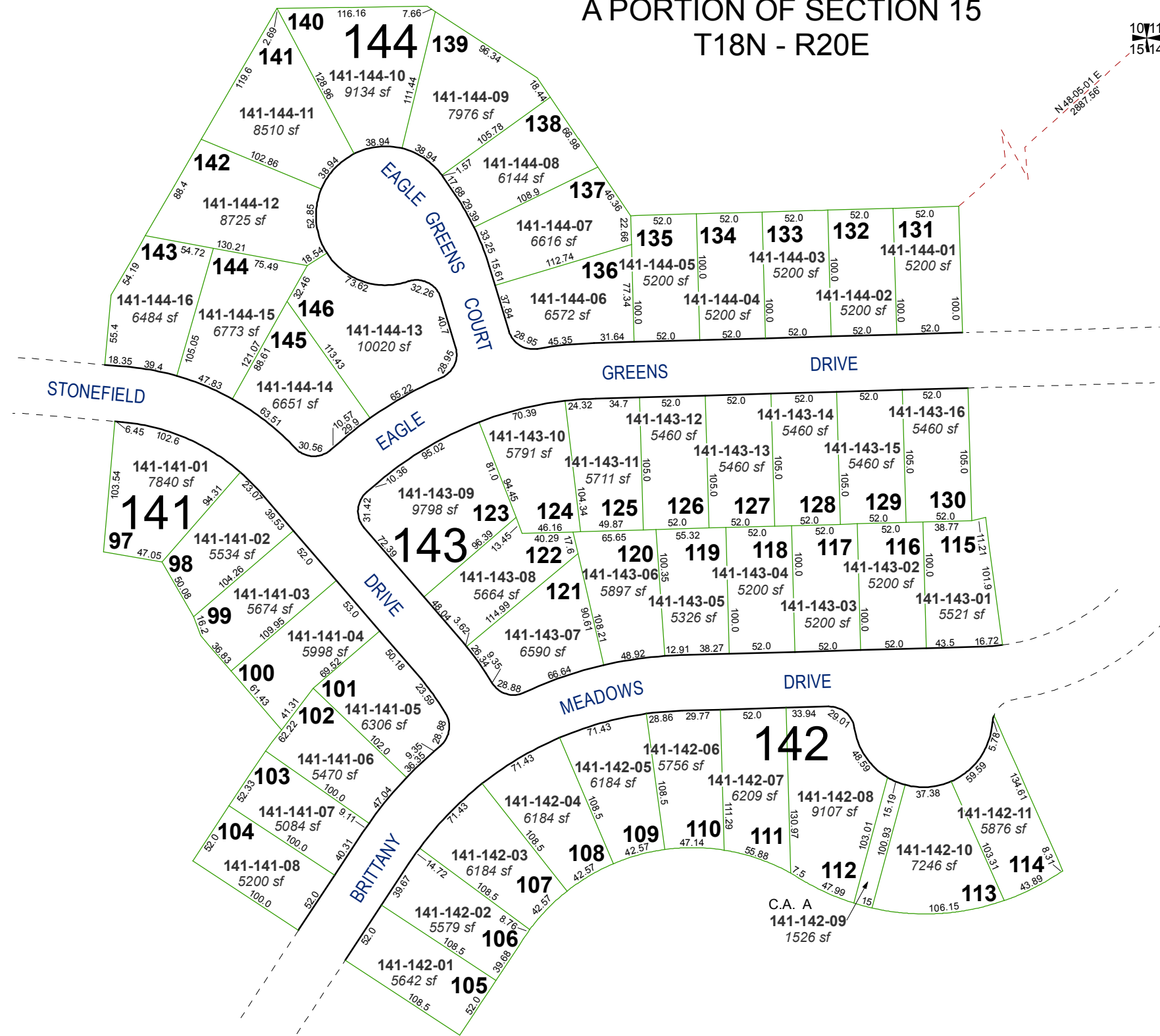


(#4267) VILLAGES AT DAMONTE RANCH UNIT 13B

A PORTION OF SECTION 15
T18N - R20E

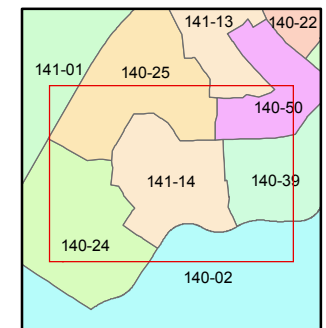
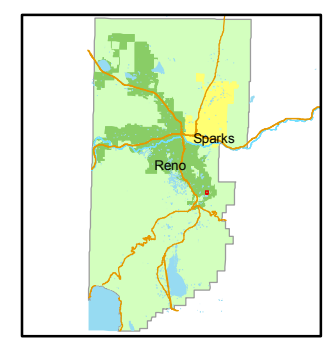
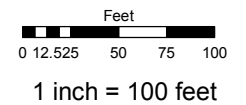


C.A. = COMMON AREA

Assessor's Map Number
141-14

STATE OF NEVADA
WASHOE COUNTY
ASSESSOR'S OFFICE
Joshua G. Wilson, Assessor

1001 East Ninth Street
Building D
Reno, Nevada 89512
(775) 328-2231



created by: NLH 6/20/2011
last updated: _____

area previously shown on map(s)
140-39

NOTE: This map was prepared for the use of the Washoe County Assessor for assessment and illustrative purposes only. It does not represent a survey of the premises. No liability is assumed as to the sufficiency or accuracy of the data delineated hereon.