

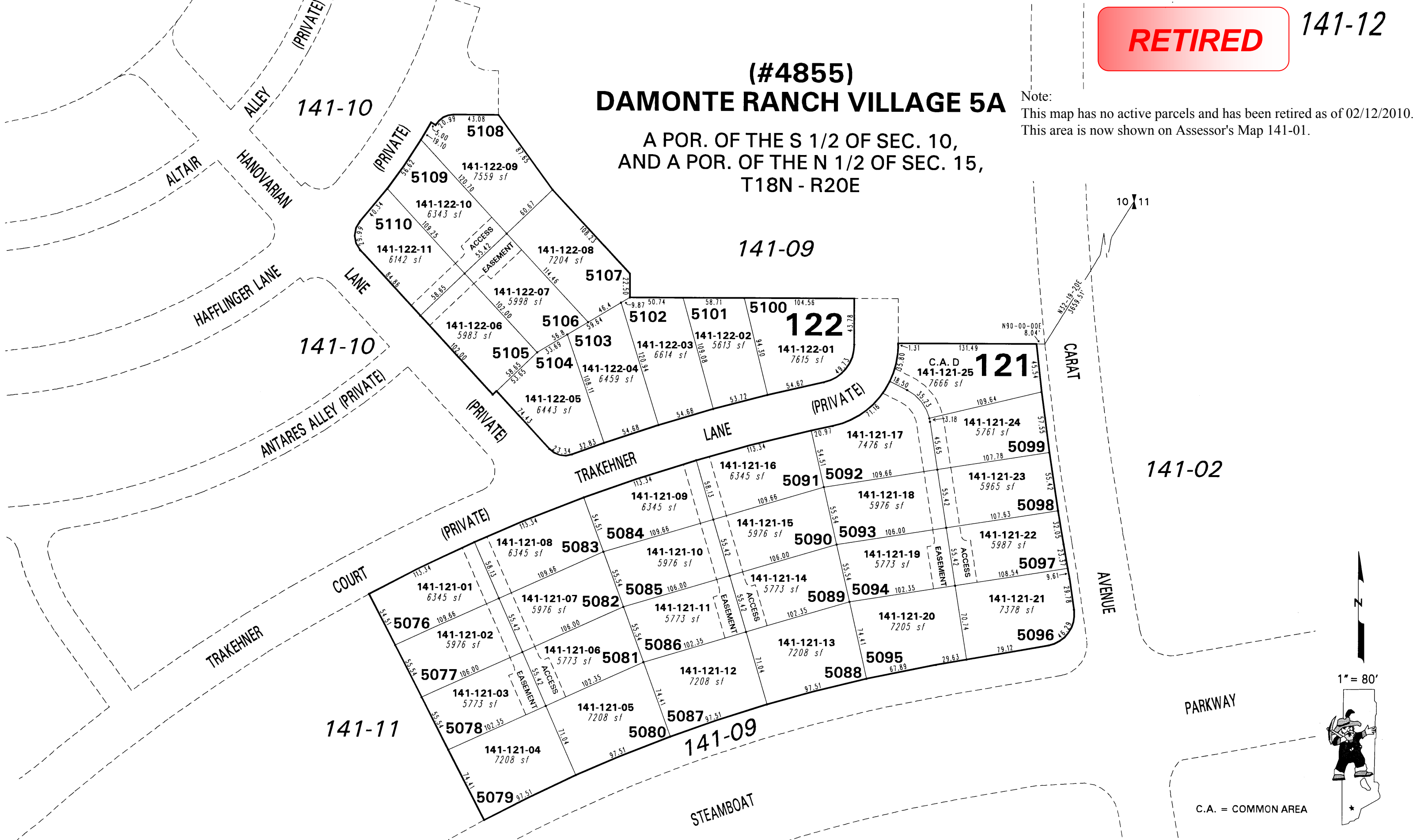
RETIRED

141-12

**(#4855)
DAMONTE RANCH VILLAGE 5A**

A POR. OF THE S 1/2 OF SEC. 10,
AND A POR. OF THE N 1/2 OF SEC. 15,
T18N - R20E

Note:
This map has no active parcels and has been retired as of 02/12/2010.
This area is now shown on Assessor's Map 141-01.



NOTE: This map is prepared for the use of the Washoe County Assessor for assessment and illustrative purposes only. It does not represent a survey of the premises. No liability is assumed as to the sufficiency or the accuracy of the data delineated hereon.

Office of Washoe County Assessor, Nevada - Joshua G. Wilson

BOOK 140

This area previously shown on 141-01

NOTE: Areas of parcels which are less than 2 acres are shown in square feet.

Drawn by NLH 03/26/08
Revised _____