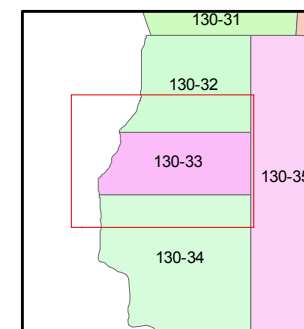
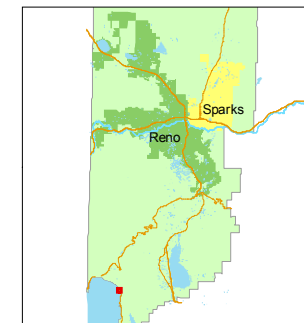


1 inch = 100 feet



created by: CFB 06/03/2009

last updated: CFB 05/25/2011

area previously shown on map(s)

055-34

NOTE: This map was prepared for the use of the Washoe County Assessor for assessment and illustrative purposes only. It does not represent a survey of the premises. No liability is assumed as to the sufficiency or accuracy of the data delineated hereon.

(#236)

# AMENDED ROCKY POINT SUBDIVISION

PORTION OF THE S 1/2 OF LOT 1, SECTION 26, T16N-R18E.

