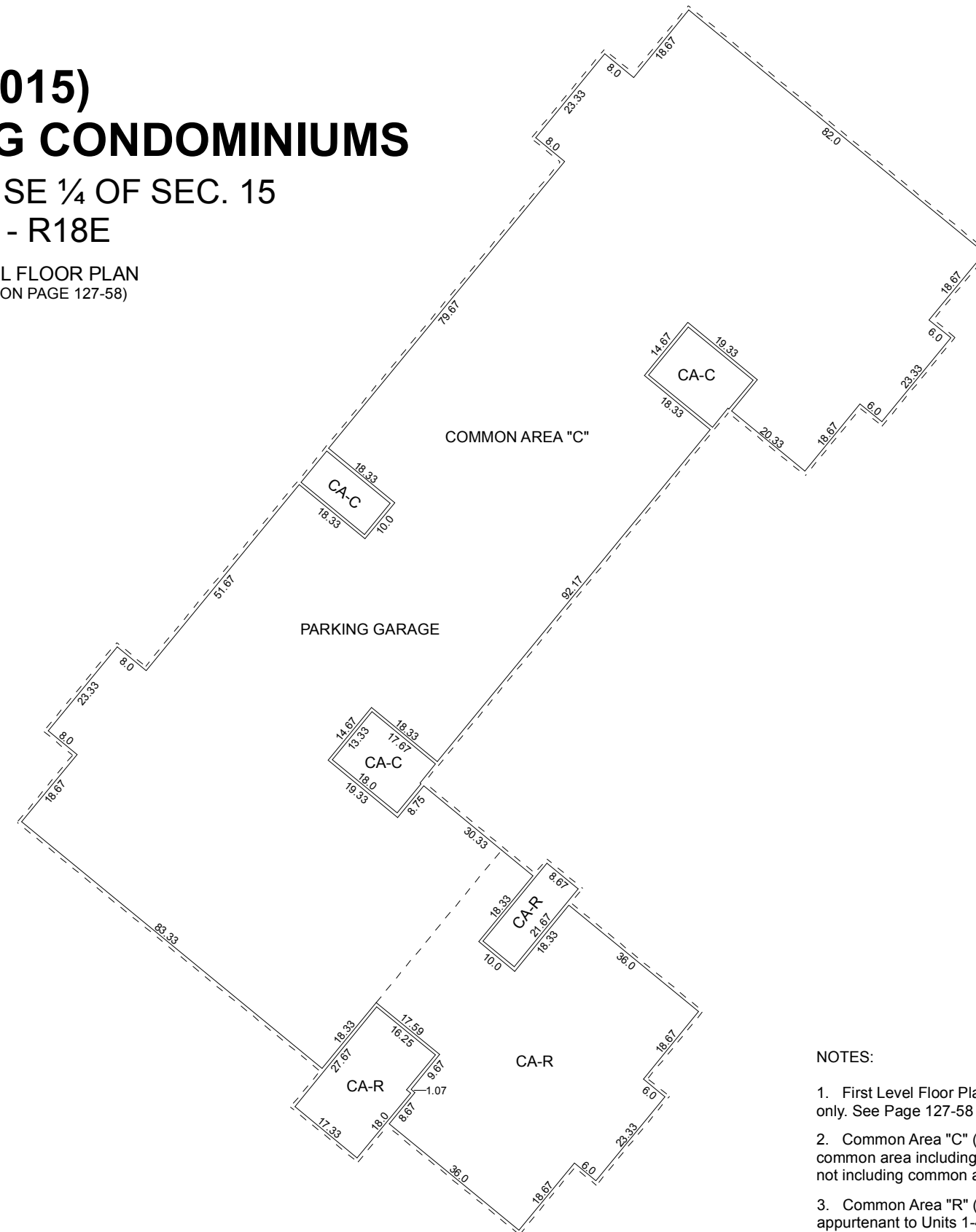


(#4015)
EAGLES LANDING CONDOMINIUMS
 A POR. OF THE SE ¼ OF SEC. 15
 T16N - R18E

FIRST LEVEL FLOOR PLAN
 (PARCELLED ON PAGE 127-58)



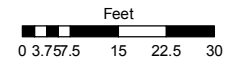
NOTES:

1. First Level Floor Plan shown hereon for dimensions only. See Page 127-58 for parcel number.
2. Common Area "C" (CA-C) denotes entire first level common area including area appurtenant to Unit 5, but not including common areas appurtenant to Units 1-4
3. Common Area "R" (CA-R) denotes common areas appurtenant to Units 1-4 only.

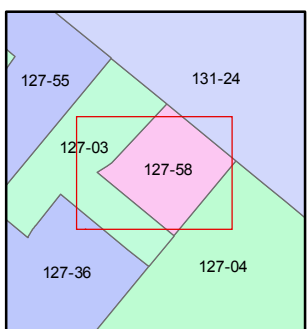
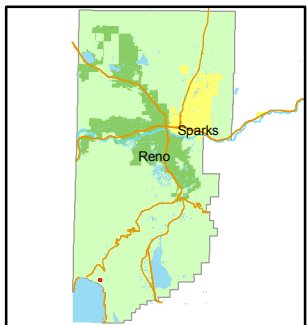
Assessor's Map Number
127-58-S1

STATE OF NEVADA
WASHOE COUNTY
ASSESSOR'S OFFICE
 Joshua G. Wilson, Assessor

1001 East Ninth Street
 Building D
 Reno, Nevada 89512
 (775) 328-2231



1 inch = 30 feet



created by: NLH 8/02/2010

last updated: _____

area previously shown on map(s)

127-03

NOTE: This map was prepared for the use of the Washoe County Assessor for assessment and illustrative purposes only. It does not represent a survey of the premises. No liability is assumed as to the sufficiency or accuracy of the data delineated hereon.