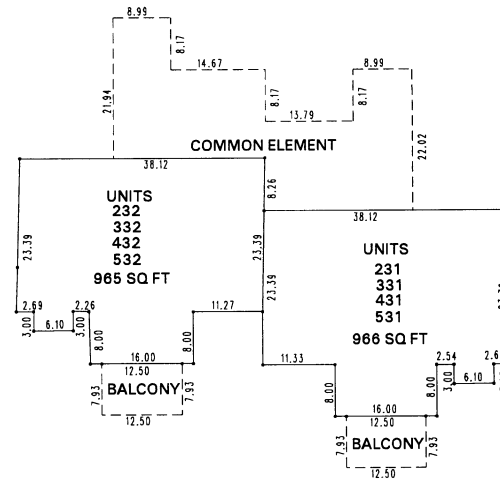


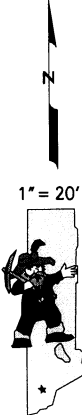
THIRD FLOOR PLANS  
TYPE T2

**(#3506)  
HYATT VACATION CLUB  
A COMMON INTEREST COMMUNITY**  
PORTION OF THE NE 1/4 OF SECTION 22  
T16N - R18E



UNIT NUMBERS CHANGED PER  
DOC #2370652

THIRD FLOOR PLANS  
TYPE T1



DEMINISONS GIVEN ARE FOR OUTSIDE MEASUREMENTS

NOTE: This map is prepared for the use of the Washoe County Assessor for assessment and illustrative purposes only. It does not represent a survey of the premises. No liability is assumed as to the sufficiency or the accuracy of the data delineated hereon.

Office of Washoe County Assessor, Nevada - Robert W. McGowan

This area previously shown on 127-01  
NOTE:  
ASSESSOR'S BLOCK NUMBERS SHOWN IN ELLIPSES  
ASSESSOR'S PARCEL NUMBERS SHOWN IN CIRCLES

Drawn by	DSR 4/3/98
Revised	DSR 9/7/99