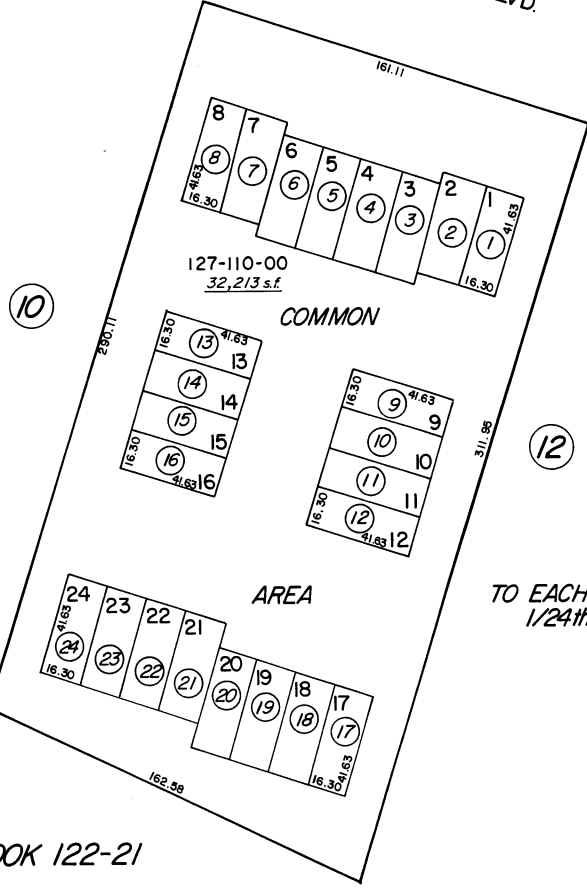


BOOK 132

SOUTHWOOD BLVD.

(# 924)
SOUTHWOOD PINES
PORTION SE⁴-SECTION 16
T16N-R18E
A CONDOMINIUM



127-110-00
32,213 s.f.

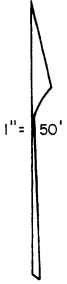
COMMON

AREA

TO EACH AN UNDIVIDED
1/24th INTEREST

NW COR. LOT 7 BLOCK K
LAKEVIEW SUB.

BOOK 122-21



NOTE: This Map is prepared for the use of the Washoe County Assessor for Assessment and illustrative purposes only, it does not represent survey of the premises. No liability is assumed as to the sufficiency or accuracy of the data delineated hereon.

Assessor's Map County of Washoe, Nevada

NOTE - ASSESSOR'S BLOCK NUMBERS SHOWN IN ELLIPSES
ASSESSOR'S PARCEL NUMBERS SHOWN IN CIRCLES

drawn by	P.C. 10/64
revised	TWT 1/22/08
superseded	BT 7/83