

124-81

124-06

McDONALD DRIVE

# (#2877) ASPEN WOODS A CONDOMINIUM

## AN UNDIVIDED 1/15th INTEREST EACH IN COMMON AREA PORTION OF THE NORTHEAST 1/4 OF SECTION 16, T16N - R18E

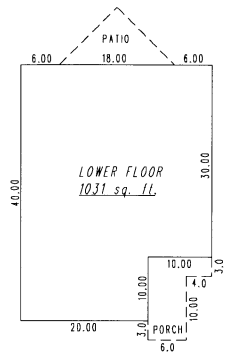
124-07

124-04

MCCOURRY DRIVE

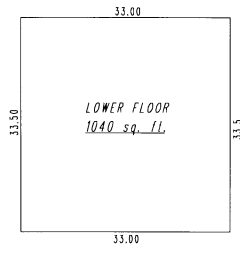
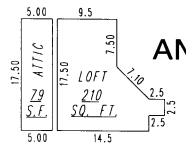
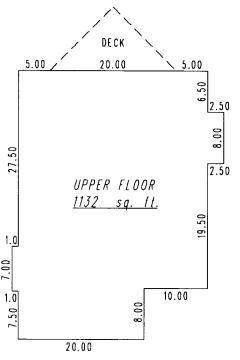
124-60

DRIVE



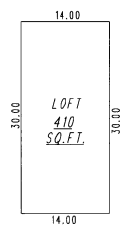
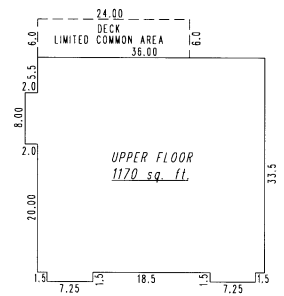
TYPICAL UNIT (EXCEPT UNIT 8)

SCALE 1" = 20'

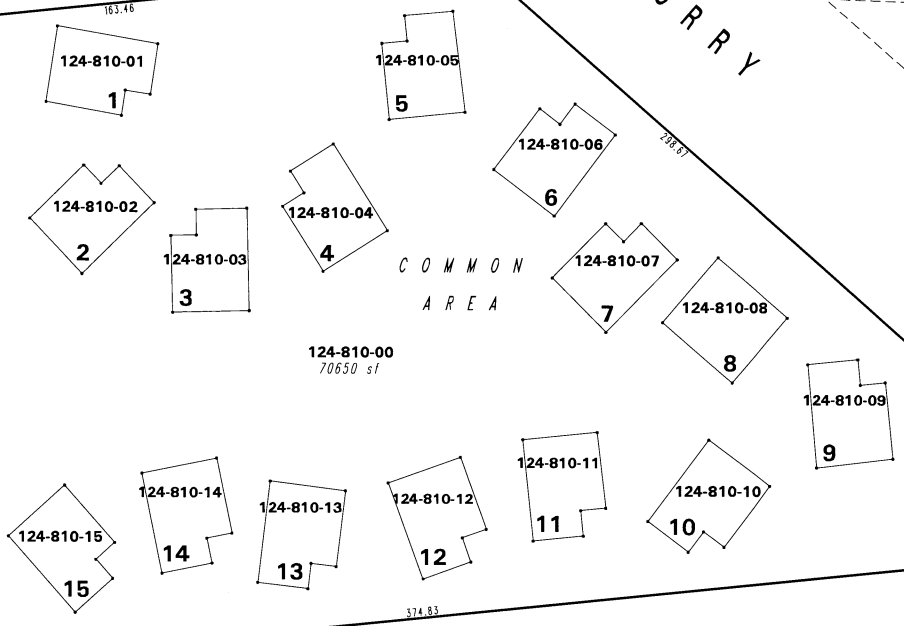


UNIT 8 ONLY

SCALE 1" = 20'



124-84

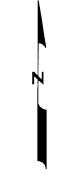


NORTHWOOD

BLVD.

132-03

132-01



1" = 50'



NOTE: This map is prepared for the use of the Washoe County Assessor for assessment and illustrative purposes only. It does not represent a survey of the premises. No liability is assumed as to the sufficiency or the accuracy of the data delineated hereon.

Office of Washoe County Assessor, Nevada - Joshua G. Wilson

This area previously shown on \_\_\_\_\_

NOTE: Areas of parcels which are less than 2 acres are shown in square feet.

Drawn by	TWT	01/15/08
Revised		

ARC INFO 9.2 WINDOWS 2000 5.0