

123-27-S1

(#1937) AMENDED STILLWATER COVE

A CONDOMINIUM
PORTION OF SEC. 19
PORTION OF SEC. 30
T16N - R18E

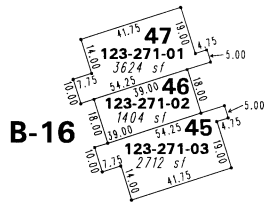
LAKE
TAHOE

123-27

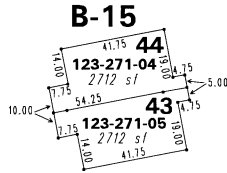
NO. 28

HIGHWAY

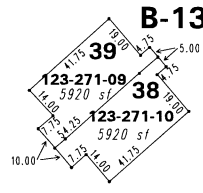
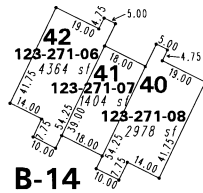
STATE



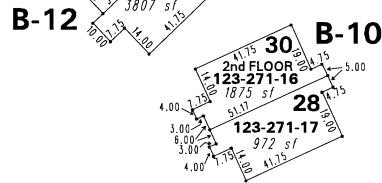
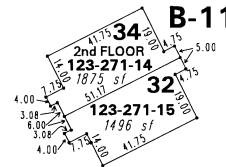
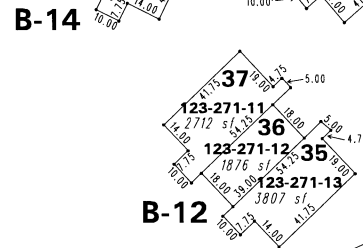
UNITS ONLY



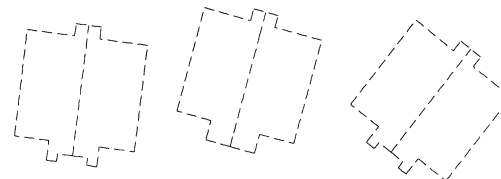
271



COMMON AREA



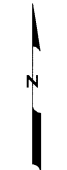
27-S2



EXCEPT AS MARKED UNITS ARE ON THE FIRST FLOOR

This area previously shown on _____

NOTE: Areas of parcels which are less than 2 acres
are shown in square feet.



1" = 50'



NOTE: This map is prepared for the use of the Washoe County Assessor for assessment and illustrative purposes only. It does not represent a survey of the premises. No liability is assumed as to the sufficiency or the accuracy of the data delineated hereon.

Office of Washoe County Assessor, Nevada - Joshua G. Wilson

Drawn by	<u>JL 10/09/07</u>
Revised	<u>05/29/2008</u>