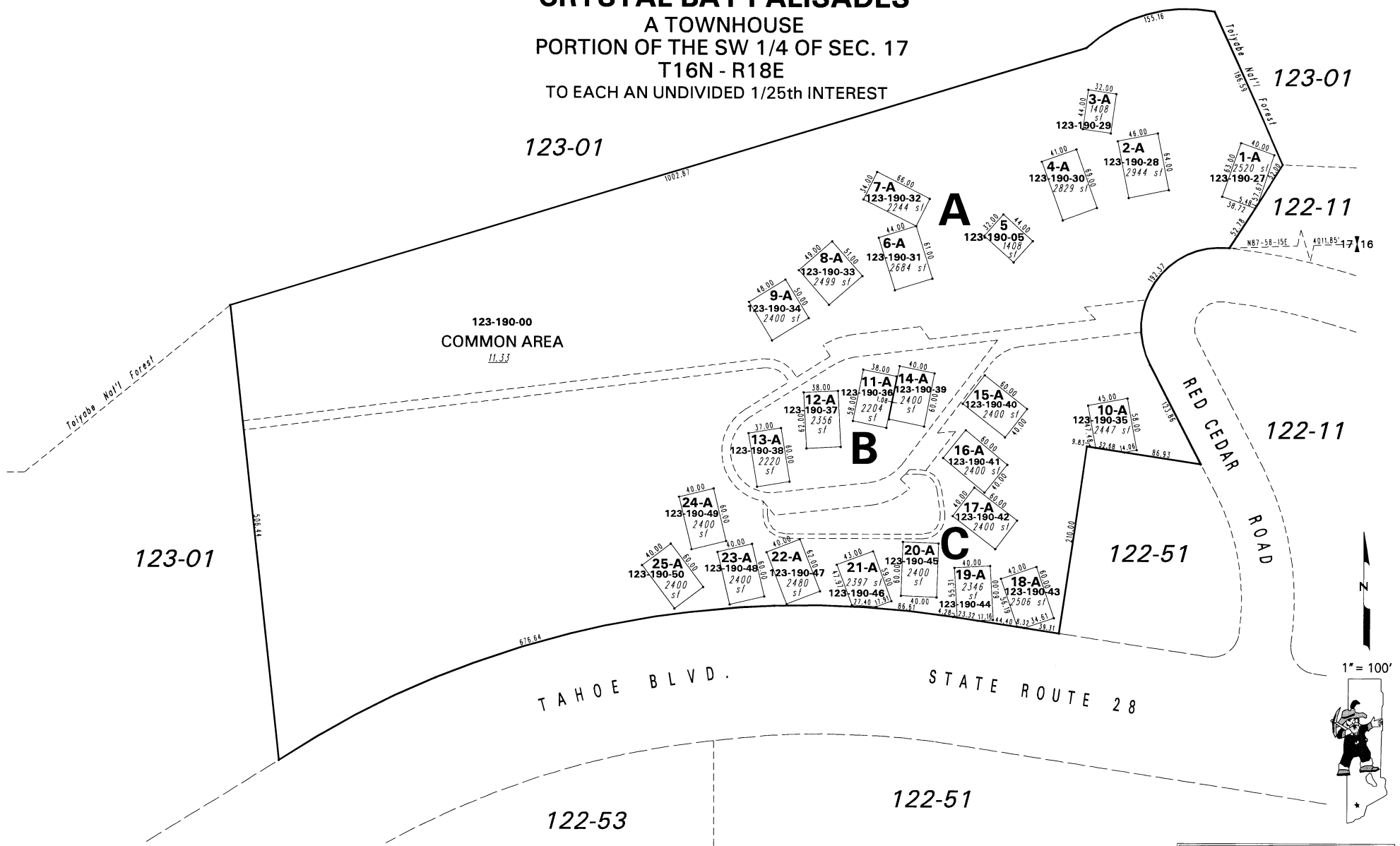


# RECORD OF SURVEY #3772 CRYSTAL BAY PALISADES

123-19

A TOWNHOUSE  
PORTION OF THE SW 1/4 OF SEC. 17  
T16N - R18E  
TO EACH AN UNDIVIDED 1/25th INTEREST



NOTE: This map is prepared for the use of the Washoe County Assessor for assessment and illustrative purposes only. It does not represent a survey of the premises. No liability is assumed as to the sufficiency or the accuracy of the data delineated hereon.

Office of Washoe County Assessor, Nevada - Joshua G. Wilson

This area previously shown on \_\_\_\_\_

NOTE: Areas of parcels which are less than 2 acres are shown in square feet.

Drawn by	TWT	05/05/00
Revised	TWT	1/10/08

ARC/INFO 9.2 WINDOWS 2000 E.O.