

**(#914)
CAL-NEVA
HIGHLANDS
UNIT NO.2**

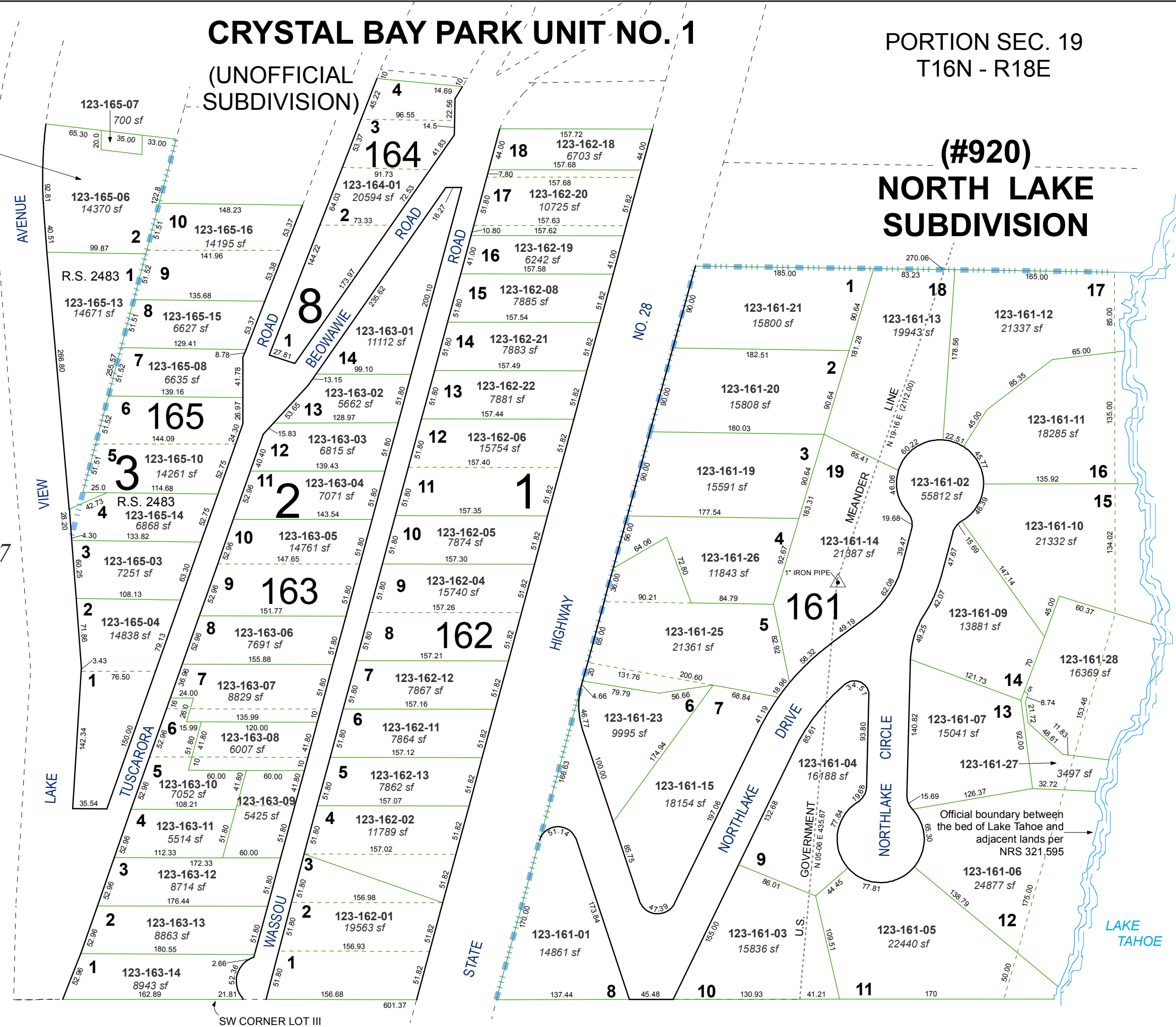
CRYSTAL BAY PARK UNIT NO. 1

(UNOFFICIAL
SUBDIVISION)

PORTION SEC. 19
T16N - R18E

**(#920)
NORTH LAKE
SUBDIVISION**

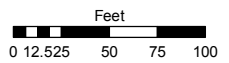
123-17



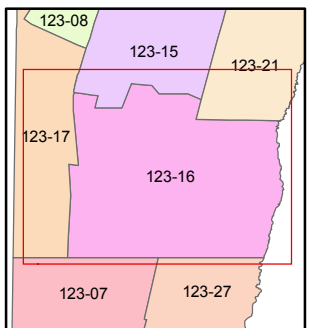
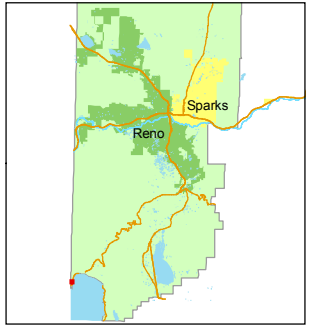
Assessor's Map Number
123-16

STATE OF NEVADA
**WASHOE COUNTY
ASSESSOR'S OFFICE**
Joshua G. Wilson, Assessor

1001 East Ninth Street
Building D
Reno, Nevada 89512
(775) 328-2231



1 inch = 100 feet



created by: CFB 06/08/2010

last updated: _____

area previously shown on map(s) _____

NOTE: This map was prepared for the use of the Washoe County Assessor for assessment and illustrative purposes only. It does not represent a survey of the premises. No liability is assumed as to the sufficiency or accuracy of the data delineated hereon.