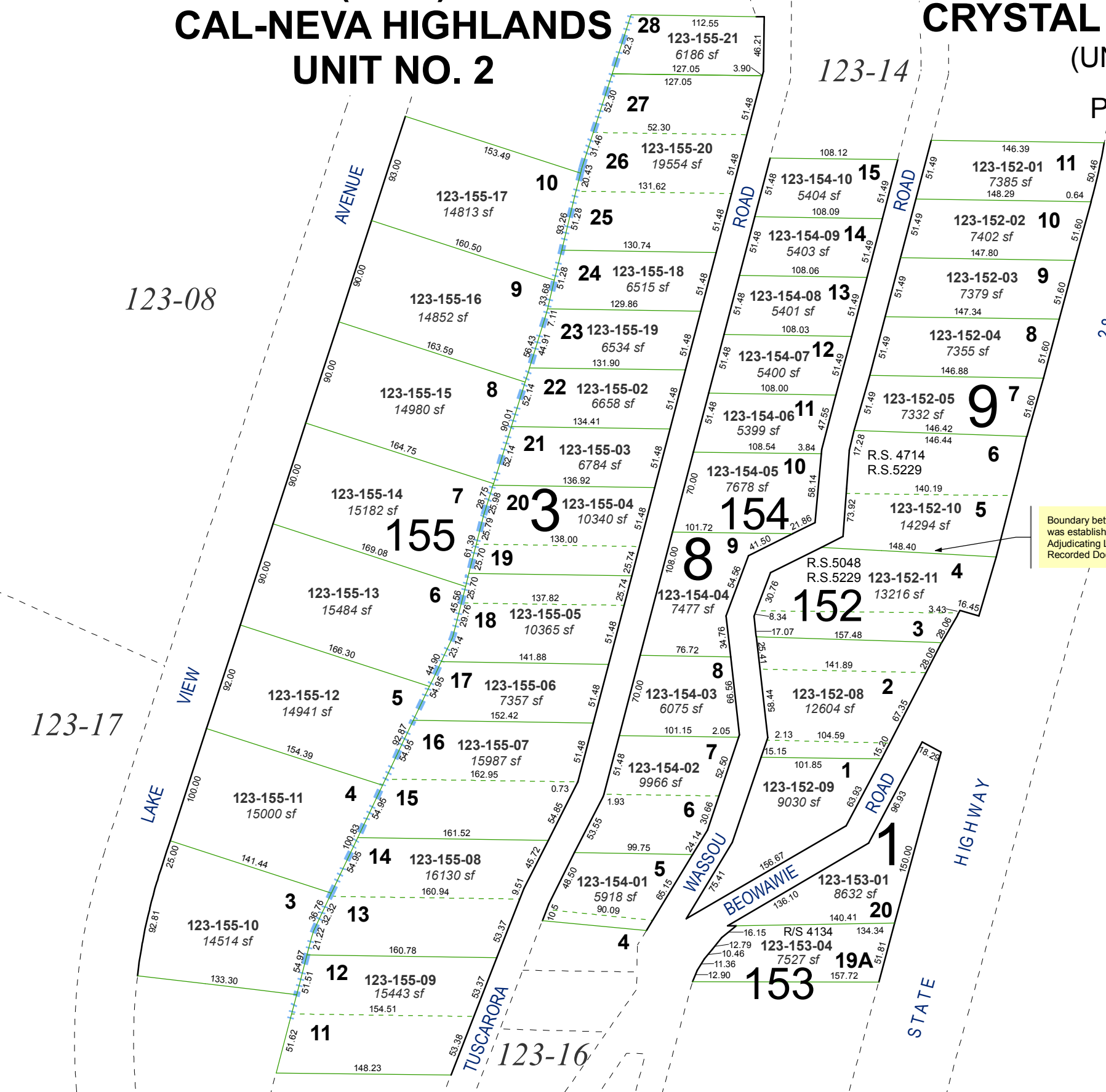


**(#914)
CAL-NEVA HIGHLANDS
UNIT NO. 2**

**CRYSTAL BAY PARK UNIT NO. 1
(UNOFFICIAL SUBDIVISION)**

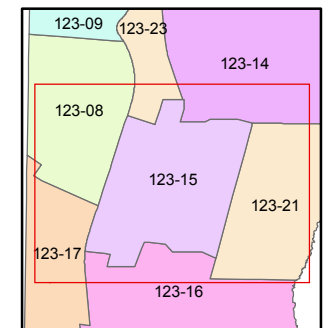
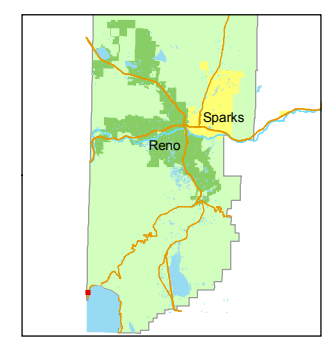
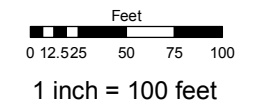
PORTION OF SECTION 19
T16N - R18E



Assessor's Map Number
123-15

STATE OF NEVADA
**WASHOE COUNTY
ASSESSOR'S OFFICE**
Joshua G. Wilson, Assessor

1001 East Ninth Street
Building D
Reno, Nevada 89512
(775) 328-2231



created by: CFB 06/09/2010
last updated: CFB 10/28/2010

area previously shown on map(s)

NOTE: This map was prepared for the use of the Washoe County Assessor for assessment and illustrative purposes only. It does not represent a survey of the premises. No liability is assumed as to the sufficiency or accuracy of the data delineated hereon.