

# CRYSTAL BAY PARK UNIT NO. 1

(UNOFFICIAL SUBDIVISION)

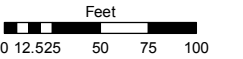
PORTION SEC. 19  
T16N - R18E

Assessor's Map Number

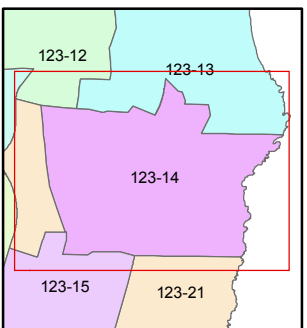
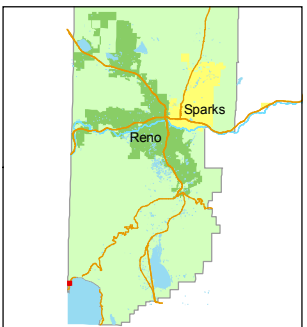
**123-14**

STATE OF NEVADA  
**WASHOE COUNTY**  
ASSESSOR'S OFFICE  
Joshua G. Wilson, Assessor

1001 East Ninth Street  
Building D  
Reno, Nevada 89512  
(775) 328-2231



1 inch = 100 feet



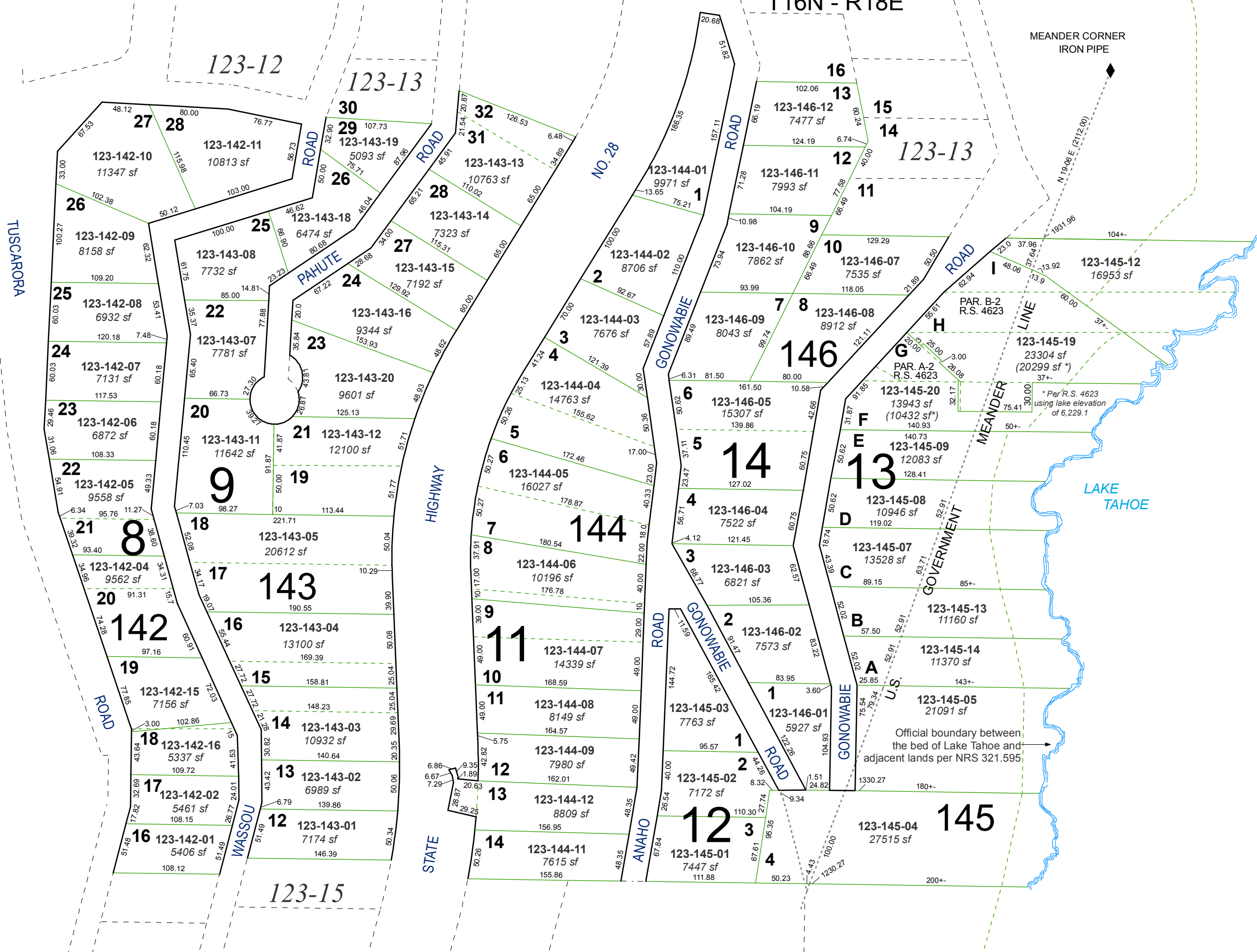
created by: CFB 06/10/2010

last updated: \_\_\_\_\_

area previously shown on map(s) \_\_\_\_\_

NOTE: This map was prepared for the use of the Washoe County Assessor for assessment and illustrative purposes only. It does not represent a survey of the premises. No liability is assumed as to the sufficiency or accuracy of the data delineated hereon.

123-12  
123-13  
123-23



Official boundary between  
the bed of Lake Tahoe and  
adjacent lands per NRS 321.595