

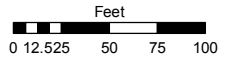
CRYSTAL BAY PARK UNIT NO. 2 (UNOFFICIAL SUBDIVISION)

Assessor's Map Number

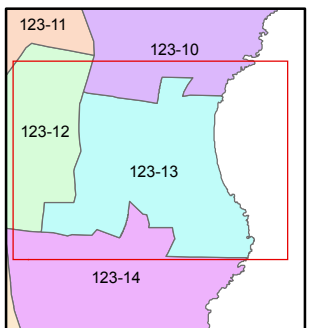
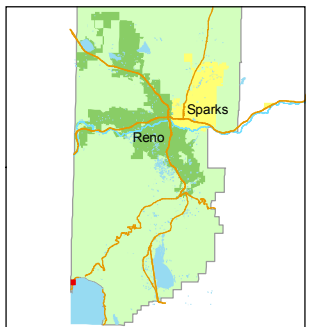
123-13

STATE OF NEVADA
WASHOE COUNTY
ASSESSOR'S OFFICE
Joshua G. Wilson, Assessor

1001 East Ninth Street
Building D
Reno, Nevada 89512
(775) 328-2231



1 inch = 100 feet



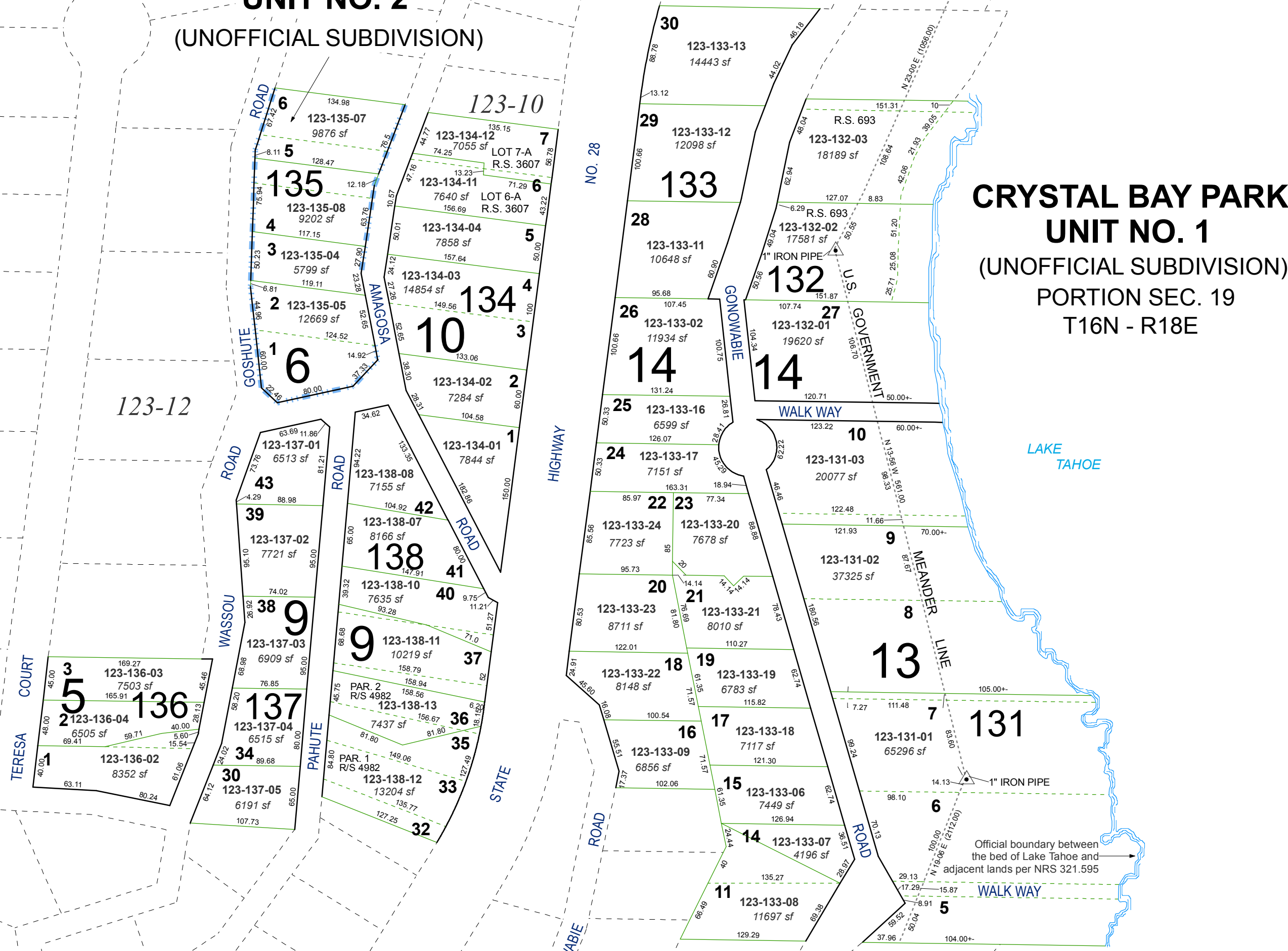
created by: CFB 06/10/2010

last updated: _____

area previously shown on map(s)

NOTE: This map was prepared for the use of the Washoe County Assessor for assessment and illustrative purposes only. It does not represent a survey of the premises. No liability is assumed as to the sufficiency or accuracy of the data delineated hereon.

CRYSTAL BAY PARK UNIT NO. 1 (UNOFFICIAL SUBDIVISION) PORTION SEC. 19 T16N - R18E



Official boundary between
the bed of Lake Tahoe and
adjacent lands per NRS 321.595