

CALIFORNIA

CRYSTAL

123-04

DRIVE

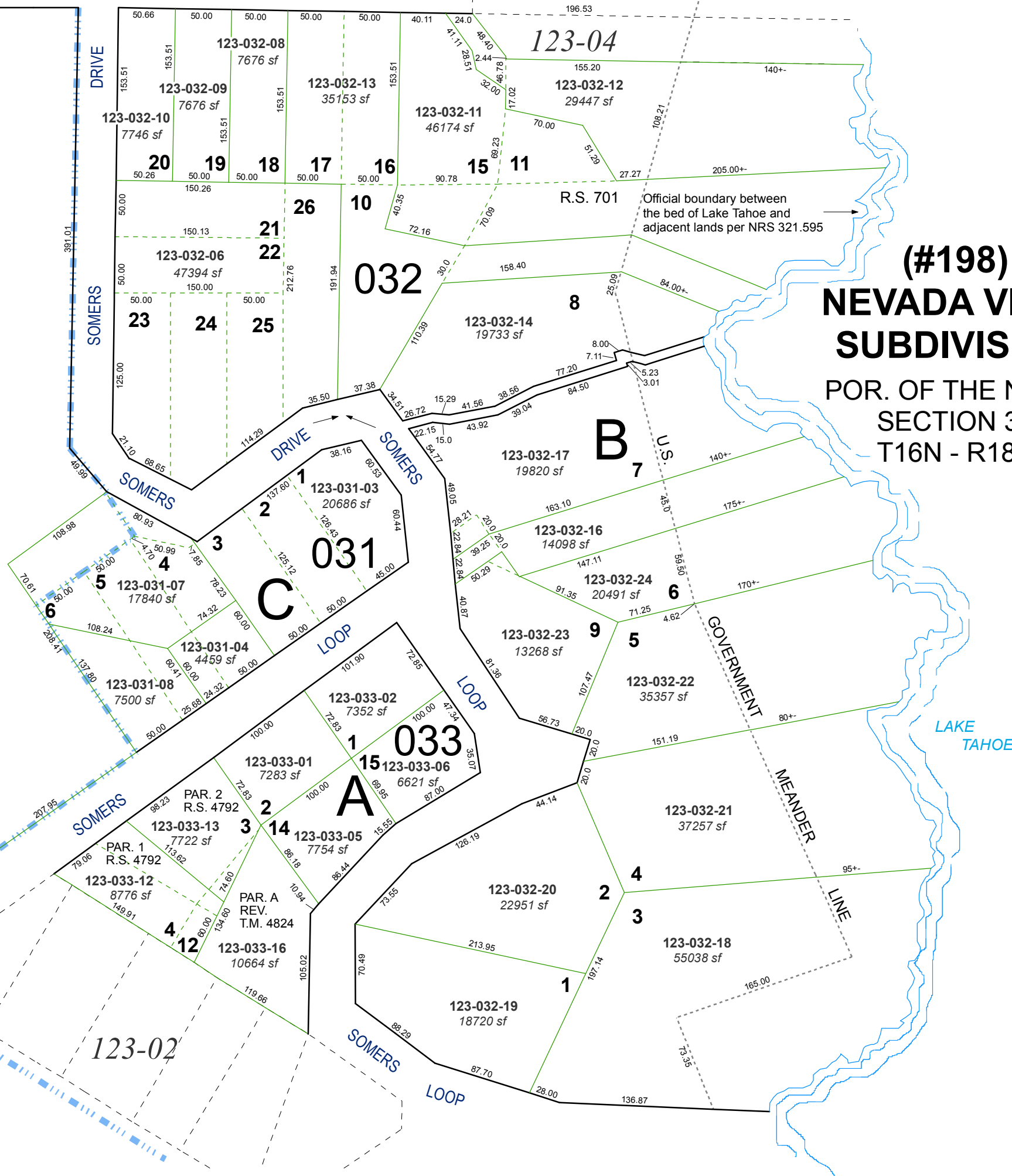
STATE LINERD.

123-031-09
2000 sf

123-031-01
8.46 ac.

MILE POST 191

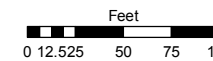
NOTE: 123-033-06 is restricted to permanent open space per Document No. 1285294. Residential allocation has been transferred to 125-141-05.



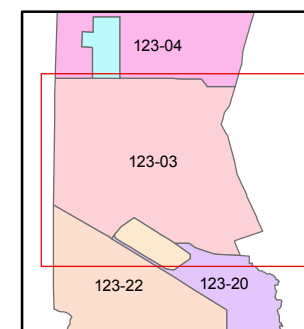
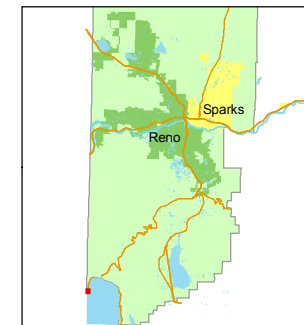
Assessor's Map Number
123-03

STATE OF NEVADA
WASHOE COUNTY
ASSESSOR'S OFFICE
Joshua G. Wilson, Assessor

1001 East Ninth Street
Building D
Reno, Nevada 89512
(775) 328-2231



1 inch = 100 feet



created by: CFB 05/27/2010

last updated:

area previously shown on map(s)

NOTE: This map was prepared for the use of the Washoe County Assessor for assessment and illustrative purposes only. It does not represent a survey of the premises. No liability is assumed as to the sufficiency or accuracy of the data delineated herein.

(#198)
NEVADA VISTA
SUBDIVISION
POR. OF THE NE 1/4
SECTION 30
T16N - R18E