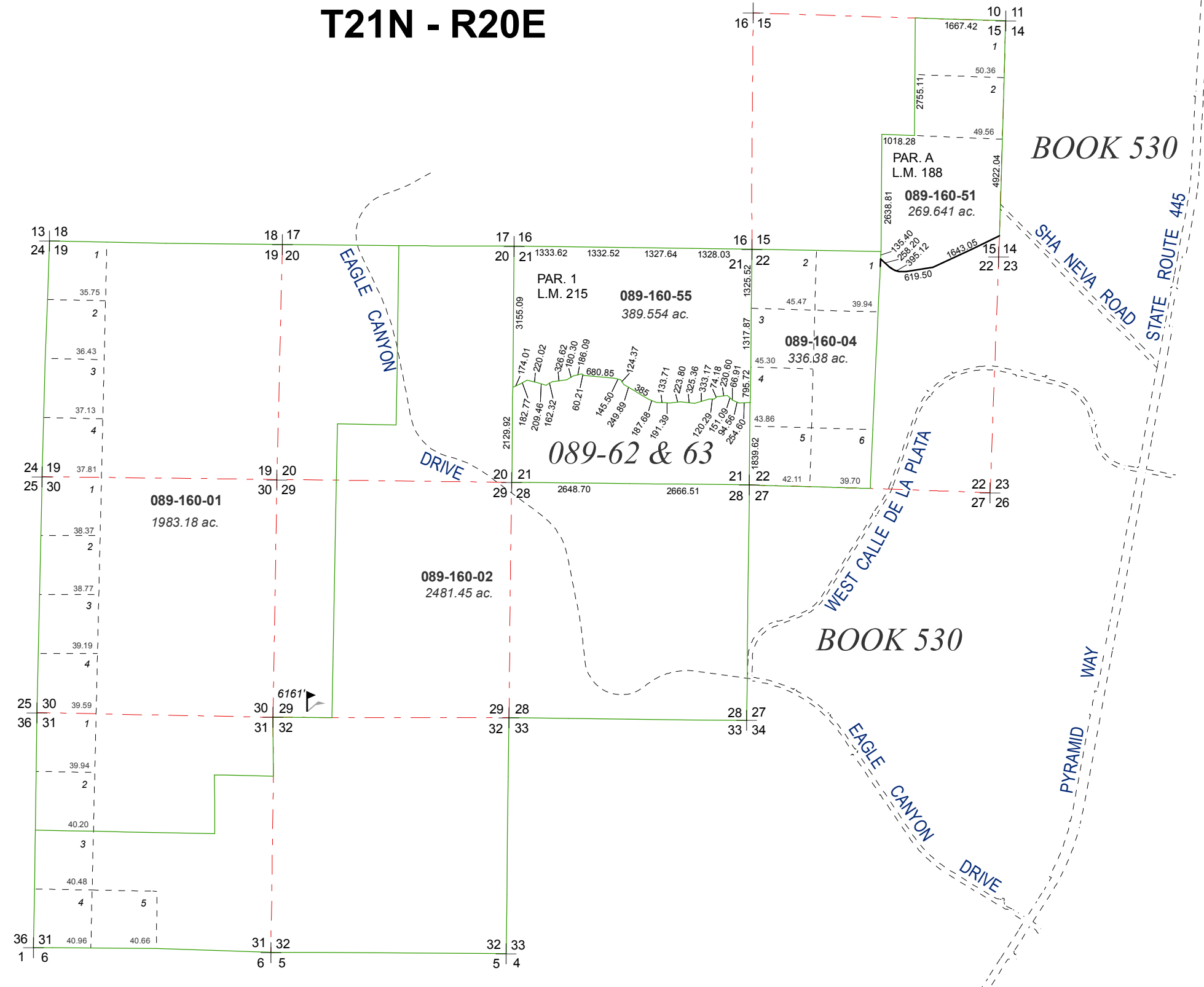


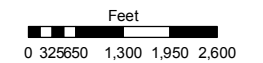
SECTIONS 19, 20, 21, 28, 29, 30, 31 & 32 AND PORTIONS OF SECTIONS 15 & 22 T21N - R20E



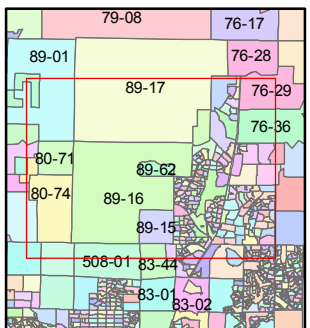
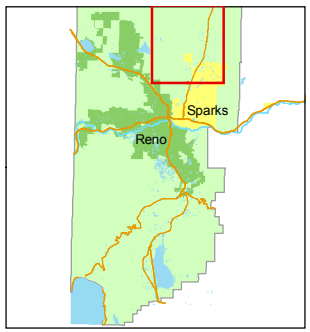
Assessor's Map Number
089-16

STATE OF NEVADA
WASHOE COUNTY
ASSESSOR'S OFFICE
Joshua G. Wilson, Assessor

1001 East Ninth Street
Building D
Reno, Nevada 89512
(775) 328-2231



1 inch = 2,640 feet



created by: TWT 11/9/2009

last updated: _____

area previously shown on map(s)

NOTE: This map was prepared for the use of the Washoe County Assessor for assessment and illustrative purposes only. It does not represent a survey of the premises. No liability is assumed as to the sufficiency or accuracy of the data delineated hereon.