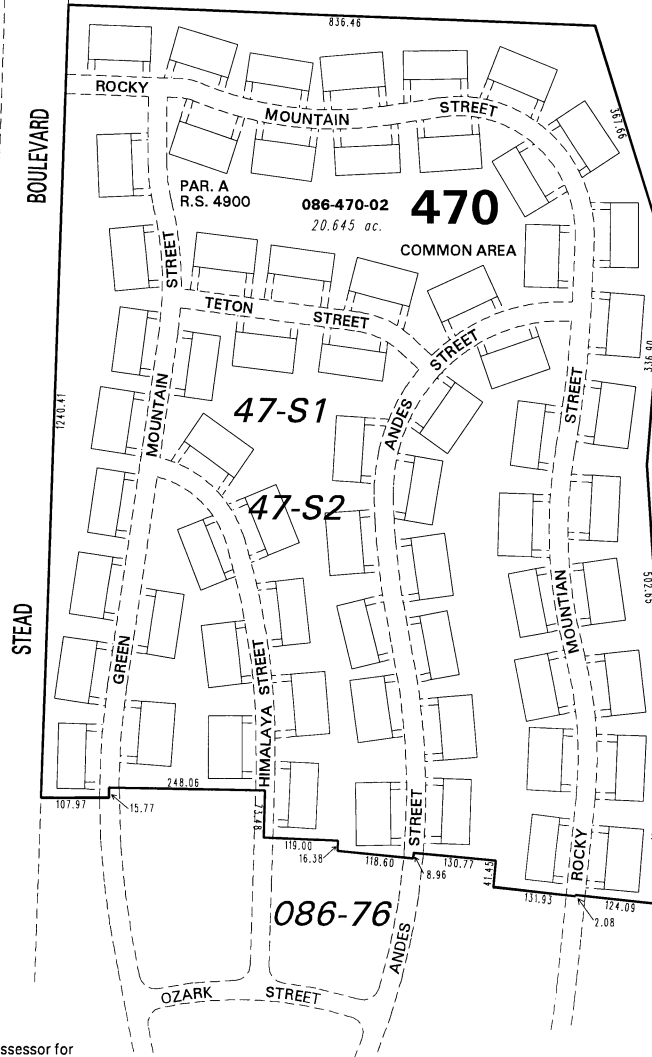


(#1501)
HAZELCREST NO. 4
A DENSITY SUBDIVISION

PORTION OF THE SW 1/4 OF SEC. 32
T21N - R19E

086-10

BOOK 090

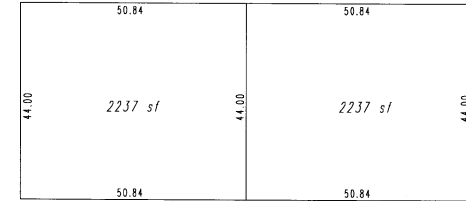


086-56

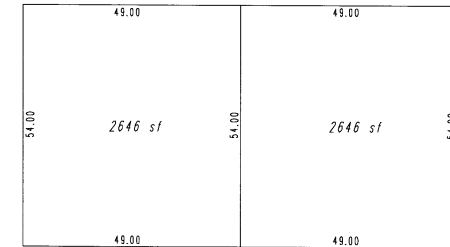
086-57

086-76

TYPICAL UNITS
(NOT TO SCALE)



"A" UNITS - 2 BEDROOM



"B" UNITS - 3 BEDROOM



1" = 200'



NOTE: This map is prepared for the use of the Washoe County Assessor for assessment and illustrative purposes only. It does not represent a survey of the premises. No liability is assumed as to the sufficiency or the accuracy of the data delineated hereon.

Office of Washoe County Assessor, Nevada - Joshua G. Wilson

This area previously shown on _____

NOTE: Areas of parcels which are less than 2 acres are shown in square feet.

Drawn by JL 05/22/07
 Revised NLH 7/25/08