

085-84

(#458)
SUN VALLEY SUBDIVISION NO. 3
PORTION OF THE NW 1/4 OF SECTION 19
T20N - R20E

085-22

BLVD.

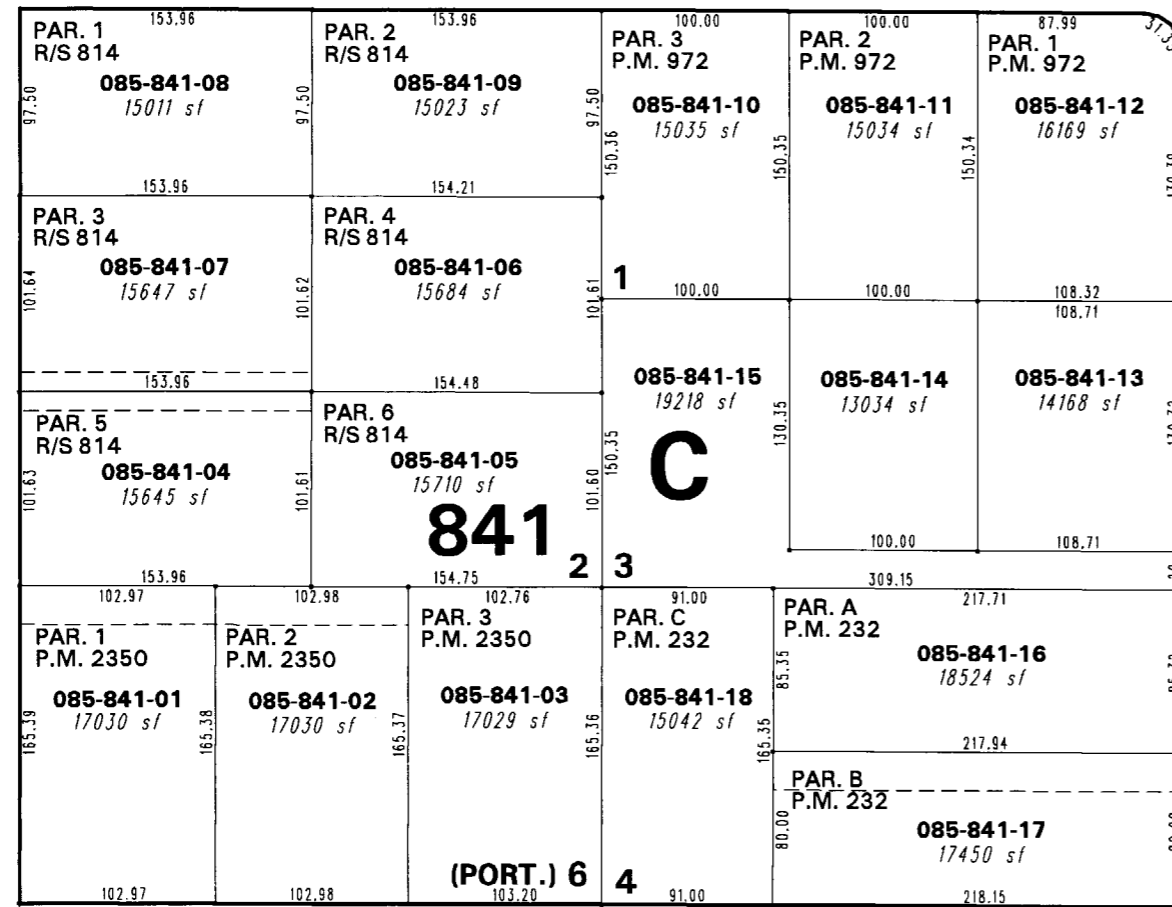
085-11

085-74

WEST

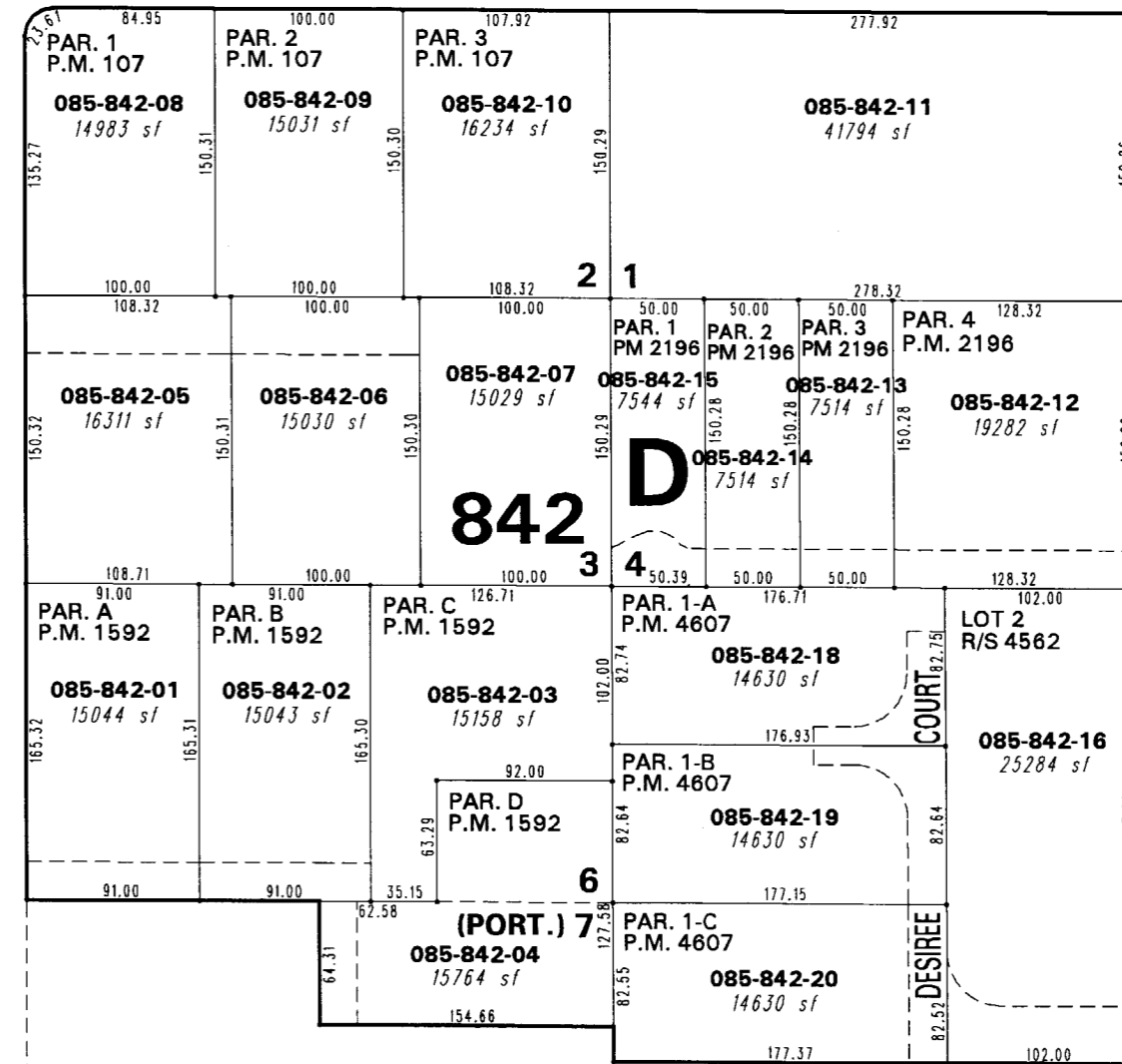
FOURTH

AVENUE



DRIVE

SLOPE



VALLEY

SUN

085-15



1" = 100'



085-73

085-10

085-10

NOTE: This map is prepared for the use of the Washoe County Assessor for assessment and illustrative purposes only. It does not represent a survey of the premises. No liability is assumed as to the sufficiency or the accuracy of the data delineated hereon.

Office of Washoe County Assessor, Nevada - Robert W. McGowan

This area previously shown on 085-10

NOTE: Areas of parcels which are less than 2 acres are shown in square feet.

Drawn by TWT 06/10/05
Revised TWT 9/19/06