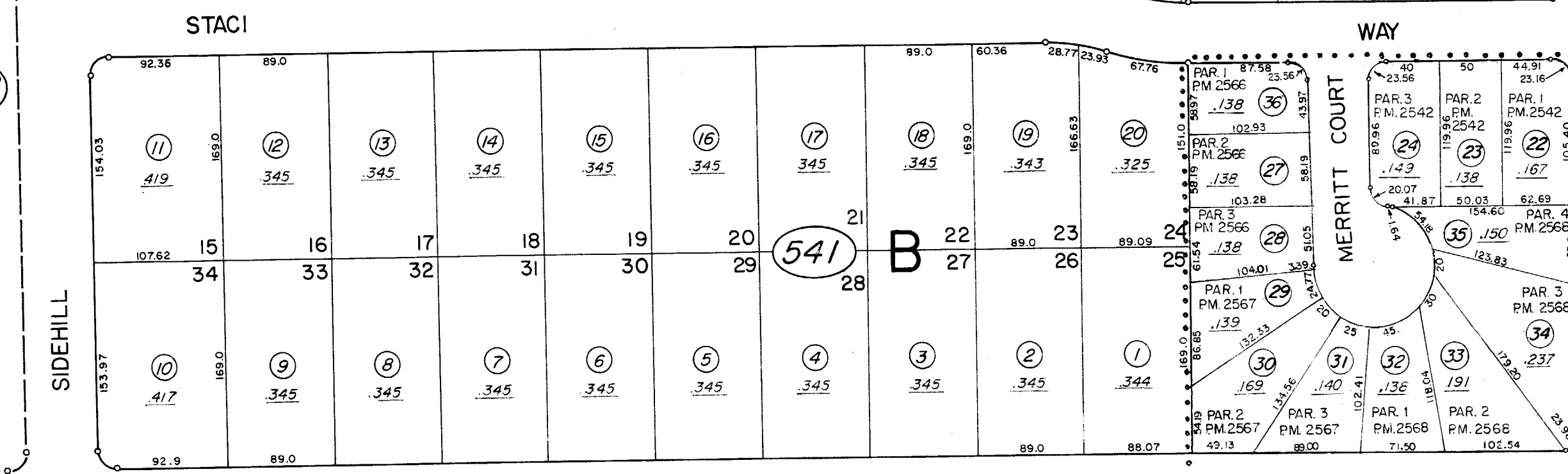
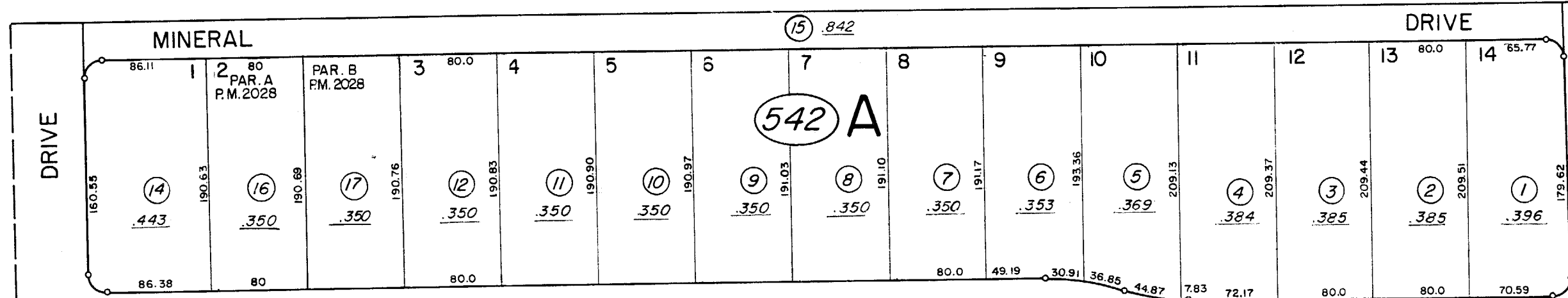


(# 1830)
AMENDED NORTH HAVEN PARK

66



68

47

WEST SEVENTH AVENUE

21

NOTE: This Map is prepared for the use of the Washoe County Assessor for Assessment and illustrative purposes only, it does not represent survey of the premises. No liability is assumed as to the sufficiency or accuracy of the data delineated hereon.

Assessor's Map County of Washoe, Nevada

NOTE - ASSESSOR'S BLOCK NUMBERS SHOWN IN ELLIPSES
ASSESSOR'S PARCEL NUMBERS SHOWN IN CIRCLES

drawn by	M.M.	2/77
checked	MP	
revised	5/7/79	M.C. 7/83 2/87
superseded	9/91 12/91 9/92 12/92	

1" = 100'

CENTER SECTION 18